


Product datasheet

Anti-SLC14A2 antibody ab95365

[1 Abreviews](#) [1 References](#) [2 Images](#)

Overview

Product name	Anti-SLC14A2 antibody
Description	Rabbit polyclonal to SLC14A2
Host species	Rabbit
Tested applications	Suitable for: WB, IHC-P
Species reactivity	Reacts with: Rat Predicted to work with: Human 
Immunogen	Synthetic peptide corresponding to the C terminal amino acids 911-929 (QEKNRRASMITKYQAYDVS) of Rat SLC14A2 (NP_062220). Run BLAST with Run BLAST with
Positive control	IHC-P: Rat colon tissue.
General notes	<p>The Life Science industry has been in the grips of a reproducibility crisis for a number of years. Abcam is leading the way in addressing this with our range of recombinant monoclonal antibodies and knockout edited cell lines for gold-standard validation. Please check that this product meets your needs before purchasing.</p> <p>If you have any questions, special requirements or concerns, please send us an inquiry and/or contact our Support team ahead of purchase. Recommended alternatives for this product can be found below, along with publications, customer reviews and Q&As</p>

Properties

Form	Liquid
Storage instructions	Shipped at 4°C. Upon delivery aliquot and store at -20°C. Avoid freeze / thaw cycles.
Storage buffer	Preservative: 0.09% Sodium azide Constituents: 50% Glycerol (glycerin, glycerine), PBS
Purity	Immunogen affinity purified
Clonality	Polyclonal
Isotype	IgG

Applications

Applications

The Abpromise guarantee

Our **Abpromise guarantee** covers the use of ab95365 in the following tested applications.

The application notes include recommended starting dilutions; optimal dilutions/concentrations should be determined by the end user.

Application	Abreviews	Notes
WB		1/1000. Predicted molecular weight: 102 kDa. 1 µg/ml of ab95365 was sufficient for detection of SLC14A2 in 20µg of rat kidney tissue lysate by colorimetric immunoblot analysis using Goat anti-rabbit IgG:HRP as the secondary antibody.
IHC-P		1/25.

Target

Function

Specialized low-affinity vasopressin-regulated urea transporter. Mediates rapid transepithelial urea transport across the inner medullary collecting duct and plays a major role in the urinary concentrating mechanism.

Tissue specificity

Isoform 1 and isoform 2 are expressed in the inner medulla of the kidney.

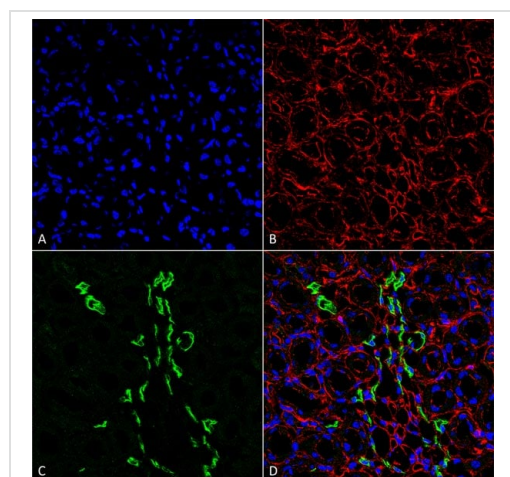
Sequence similarities

Belongs to the urea transporter family.

Cellular localization

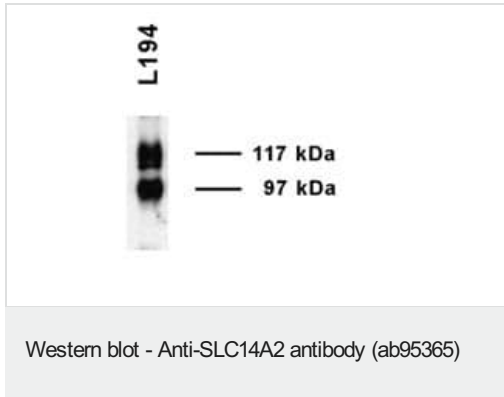
Apical cell membrane.

Images



Immunohistochemical analysis of paraffin-embedded formalin fixed (4%) rat kidney tissue labelling SLC14A2 with ab95365 at 1/25 dilution for 1 hour at RT, followed by secondary antibody Goat Anti-Rabbit IgG (Alexa Fluor 488) (Green). Membrane staining on rat kidney tissue is observed. Counter stained with Actin-binding Phalloidin-Alexa Fluor 633; DAPI (blue) nuclear stain. (A) DAPI (blue) nuclear stain. (B) Phalloidin Alex Fluor 633 (Red) F-Actin stain. (C) UT-A1 Antibody (D) Composite image.

Immunohistochemistry (Formalin/PFA-fixed paraffin-embedded sections) - Anti-SLC14A2 antibody (ab95365)



Western blot detection of SLC14A2 in Rat inner medulla using ab95365 at 1:1000 dilution.

Please note: All products are "FOR RESEARCH USE ONLY. NOT FOR USE IN DIAGNOSTIC PROCEDURES"

Our Abpromise to you: Quality guaranteed and expert technical support

- Replacement or refund for products not performing as stated on the datasheet
- Valid for 12 months from date of delivery
- Response to your inquiry within 24 hours
- We provide support in Chinese, English, French, German, Japanese and Spanish
- Extensive multi-media technical resources to help you
- We investigate all quality concerns to ensure our products perform to the highest standards

If the product does not perform as described on this datasheet, we will offer a refund or replacement. For full details of the Abpromise, please visit <https://www.abcam.com/abpromise> or contact our technical team.

Terms and conditions

- Guarantee only valid for products bought direct from Abcam or one of our authorized distributors