




Product datasheet

Anti-SLC16A3/MCT 4 antibody - C-terminal ab190497

2 Images

Overview

Product name	Anti-SLC16A3/MCT 4 antibody - C-terminal
Description	Rabbit polyclonal to SLC16A3/MCT 4 - C-terminal
Host species	Rabbit
Tested applications	Suitable for: IP, WB
Species reactivity	Reacts with: Human Predicted to work with: Rhesus monkey, Gorilla 
Immunogen	Synthetic peptide within Human SLC16A3/MCT 4 aa 400 to the C-terminus (C terminal). The exact immunogen sequence used to generate this antibody is proprietary information. If additional detail on the immunogen is needed to determine the suitability of the antibody for your needs, please contact our Scientific Support team to discuss your requirements. (NP_001193879.1) Database link: O15427
	 Run BLAST with  Run BLAST with
Positive control	HeLa, Jurkat, 293T whole cell lysate
General notes	<p>The Life Science industry has been in the grips of a reproducibility crisis for a number of years. Abcam is leading the way in addressing this with our range of recombinant monoclonal antibodies and knockout edited cell lines for gold-standard validation. Please check that this product meets your needs before purchasing.</p> <p>If you have any questions, special requirements or concerns, please send us an inquiry and/or contact our Support team ahead of purchase. Recommended alternatives for this product can be found below, along with publications, customer reviews and Q&As</p>

Properties

Storage instructions	Shipped at 4°C. Store at +4°C short term (1-2 weeks). Upon delivery aliquot. Store at -20°C long term. Avoid freeze / thaw cycle.
Storage buffer	pH: 7 Preservative: 0.09% Sodium azide Constituent: 99% Tris citrate/phosphate pH: 7 to 8
Purity	Immunogen affinity purified

Clonality	Polyclonal
Isotype	IgG

Applications

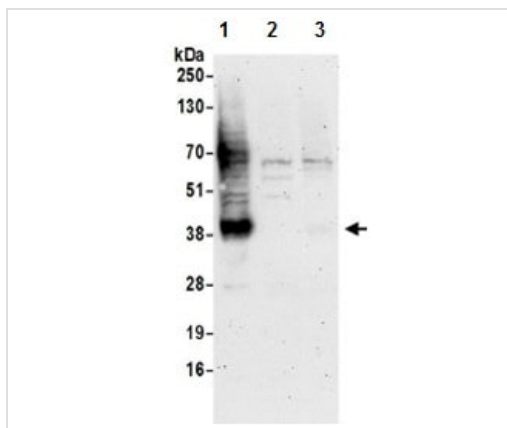
The Abpromise guarantee Our **Abpromise guarantee** covers the use of ab190497 in the following tested applications. The application notes include recommended starting dilutions; optimal dilutions/concentrations should be determined by the end user.

Application	Abreviews	Notes
IP		Use at 2-10 µg/mg of lysate.
WB		1/2000 - 1/10000. Predicted molecular weight: 49 kDa.

Target

Function	Proton-linked monocarboxylate transporter. Catalyzes the rapid transport across the plasma membrane of many monocarboxylates such as lactate, pyruvate, branched-chain oxo acids derived from leucine, valine and isoleucine, and the ketone bodies acetoacetate, beta-hydroxybutyrate and acetate.
Tissue specificity	Highly expressed in skeletal muscle.
Sequence similarities	Belongs to the major facilitator superfamily. Monocarboxylate porter (TC 2.A.1.13) family.
Cellular localization	Cell membrane.
Form	Lactic acid and pyruvate transport across plasma membranes is catalyzed by members of the proton linked monocarboxylate transporter (MCT) family, which has been designated solute carrier family 16. Each MCT appears to have slightly different substrate and inhibitor specificities and transport kinetics, which are related to the metabolic requirements of the tissues in which it is found. The MCTs, which include MCT1 and MCT2, are characterized by 12 predicted transmembrane domains.

Images



Western blot - Anti-SLC16A3/MCT 4 antibody - C-terminal (ab190497)

All lanes : Anti-SLC16A3/MCT 4 antibody - C-terminal (ab190497)
at 0.1 µg/ml

Lane 1 : HeLa cell lysate

Lane 2 : 293T cell lysate

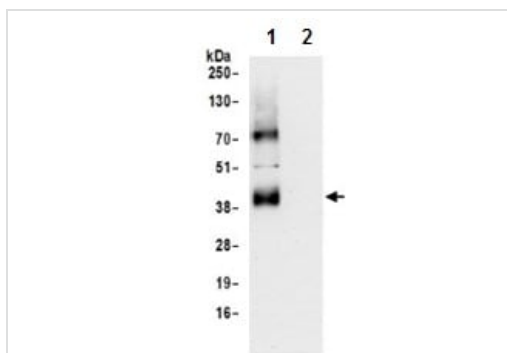
Lane 3 : Jurkat cell lysate

Lysates/proteins at 50 µg per lane.

Developed using the ECL technique.

Predicted band size: 49 kDa

Exposure time: 3 minutes



Immunoprecipitation - Anti-SLC16A3/MCT 4 antibody - C-terminal (ab190497)

Immunoprecipitation analysis of HeLa cell lysate (1 mg per IP reaction; 20% of IP loaded) labeling SLC16A3/MCT 4 using ab190497 at 6 µg per reaction (lane 1). A Control IgG was used in lane 2. For blotting immunoprecipitated SLC16A3, ab190497 was used at 0.4 µg/ml. Detection: Chemiluminescence with an exposure time of 30 seconds.

Please note: All products are "FOR RESEARCH USE ONLY. NOT FOR USE IN DIAGNOSTIC PROCEDURES"

Our Abpromise to you: Quality guaranteed and expert technical support

- Replacement or refund for products not performing as stated on the datasheet
- Valid for 12 months from date of delivery
- Response to your inquiry within 24 hours
- We provide support in Chinese, English, French, German, Japanese and Spanish
- Extensive multi-media technical resources to help you
- We investigate all quality concerns to ensure our products perform to the highest standards

If the product does not perform as described on this datasheet, we will offer a refund or replacement. For full details of the Abpromise, please visit <https://www.abcam.com/abpromise> or contact our technical team.

Terms and conditions

- Guarantee only valid for products bought direct from Abcam or one of our authorized distributors