

## Product datasheet

### Anti-SLC16A4/MCT 5 antibody ab180699

[4 References](#) [1 Image](#)

#### Overview

<b>Product name</b>	Anti-SLC16A4/MCT 5 antibody
<b>Description</b>	Rabbit polyclonal to SLC16A4/MCT 5
<b>Host species</b>	Rabbit
<b>Tested applications</b>	<b>Suitable for:</b> WB
<b>Species reactivity</b>	<b>Reacts with:</b> Mouse, Human
<b>Immunogen</b>	Synthetic peptide corresponding to Human SLC16A4/MCT 5 aa 250-350. Database link: <a href="#">O15374</a>
<b>Positive control</b>	WB: A-549, SW480, Mouse kidney, Mouse lung extracts.
<b>General notes</b>	<p>The Life Science industry has been in the grips of a reproducibility crisis for a number of years. Abcam is leading the way in addressing this with our range of recombinant monoclonal antibodies and knockout edited cell lines for gold-standard validation. Please check that this product meets your needs before purchasing.</p> <p>If you have any questions, special requirements or concerns, please send us an inquiry and/or contact our Support team ahead of purchase. Recommended alternatives for this product can be found below, along with publications, customer reviews and Q&amp;As</p>

#### Properties

<b>Form</b>	Liquid
<b>Storage instructions</b>	Shipped at 4°C. Store at +4°C short term (1-2 weeks). Upon delivery aliquot. Store at -20°C long term. Avoid freeze / thaw cycle.
<b>Storage buffer</b>	pH: 7.30 Preservative: 0.02% Sodium azide Constituents: 49% PBS, 50% Glycerol
<b>Purity</b>	Immunogen affinity purified
<b>Clonality</b>	Polyclonal
<b>Isotype</b>	IgG

#### Applications

## The Abpromise guarantee

Our **Abpromise guarantee** covers the use of ab180699 in the following tested applications.

The application notes include recommended starting dilutions; optimal dilutions/concentrations should be determined by the end user.

Application	Abreviews	Notes
WB		1/1000 - 1/2000. Predicted molecular weight: 54 kDa.

## Target

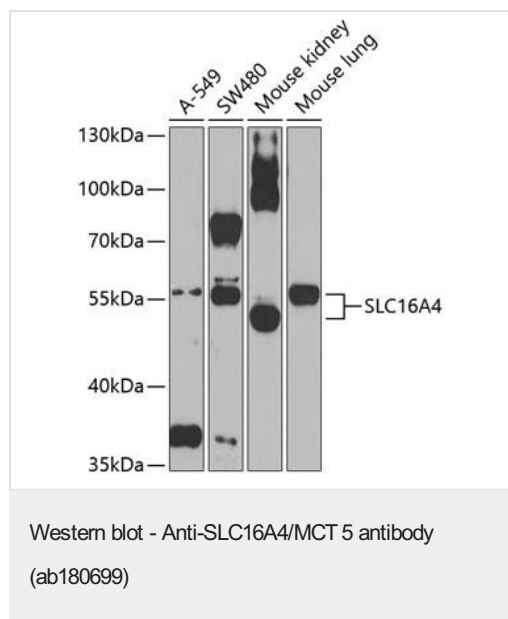
### Relevance

Lactic acid and pyruvate transport across plasma membranes is catalyzed by members of the proton linked monocarboxylate transporter (MCT) family, which has been designated solute carrier family 16. Each MCT appears to have slightly different substrate and inhibitor specificities and transport kinetics, which are related to the metabolic requirements of the tissues in which it is found.

### Cellular localization

Cell membrane; Multi-pass membrane protein.

## Images



**All lanes** : Anti-SLC16A4/MCT 5 antibody (ab180699) at 1/1000 dilution

**Lane 1** : A-549 cell lysate

**Lane 2** : SW480 cell lysate

**Lane 3** : Mouse kidney extract

**Lane 4** : Mouse lung extract

### Secondary

**All lanes** : HRP Goat Anti-Rabbit IgG

Developed using the ECL technique.

**Predicted band size:** 54 kDa

**Exposure time:** 60 seconds

Blocking buffer: 3% nonfat dry milk in TBST.

**Please note:** All products are "FOR RESEARCH USE ONLY. NOT FOR USE IN DIAGNOSTIC PROCEDURES"

**Our Abpromise to you: Quality guaranteed and expert technical support**

- Replacement or refund for products not performing as stated on the datasheet
- Valid for 12 months from date of delivery
- Response to your inquiry within 24 hours
- We provide support in Chinese, English, French, German, Japanese and Spanish
- Extensive multi-media technical resources to help you
- We investigate all quality concerns to ensure our products perform to the highest standards

If the product does not perform as described on this datasheet, we will offer a refund or replacement. For full details of the Abpromise, please visit <https://www.abcam.com/abpromise> or contact our technical team.

#### **Terms and conditions**

---

- Guarantee only valid for products bought direct from Abcam or one of our authorized distributors