


Product datasheet

Anti-SLC20A2/PIT2 antibody ab191182

[1 References](#) [1 Image](#)

Overview

Product name	Anti-SLC20A2/PIT2 antibody
Description	Rabbit polyclonal to SLC20A2/PIT2
Host species	Rabbit
Tested applications	Suitable for: WB
Species reactivity	Reacts with: Mouse, Human Predicted to work with: Chimpanzee, Rhesus monkey, Gorilla, Orangutan 
Immunogen	Synthetic peptide within Human SLC20A2/PIT2 aa 300-400. The exact immunogen sequence used to generate this antibody is proprietary information. If additional detail on the immunogen is needed to determine the suitability of the antibody for your needs, please contact our Scientific Support team to discuss your requirements. Database link: Q08357
Positive control	Whole cell lysate from HeLa, 293T, Jurkat, mouse TCMK-1 and mouse NIH3T3 cells.
General notes	<p>The Life Science industry has been in the grips of a reproducibility crisis for a number of years. Abcam is leading the way in addressing this with our range of recombinant monoclonal antibodies and knockout edited cell lines for gold-standard validation. Please check that this product meets your needs before purchasing.</p> <p>If you have any questions, special requirements or concerns, please send us an inquiry and/or contact our Support team ahead of purchase. Recommended alternatives for this product can be found below, along with publications, customer reviews and Q&As</p>

 [Run BLAST with](#)

 [Run BLAST with](#)

Properties

Form	Liquid
Storage instructions	Shipped at 4°C. Store at +4°C short term (1-2 weeks). Upon delivery aliquot. Store at -20°C long term. Avoid freeze / thaw cycle.
Storage buffer	pH: 7 Preservative: 0.09% Sodium azide Constituent: 99% Tris citrate/phosphate pH 7-8

Purity	Immunogen affinity purified
Clonality	Polyclonal
Isotype	IgG

Applications

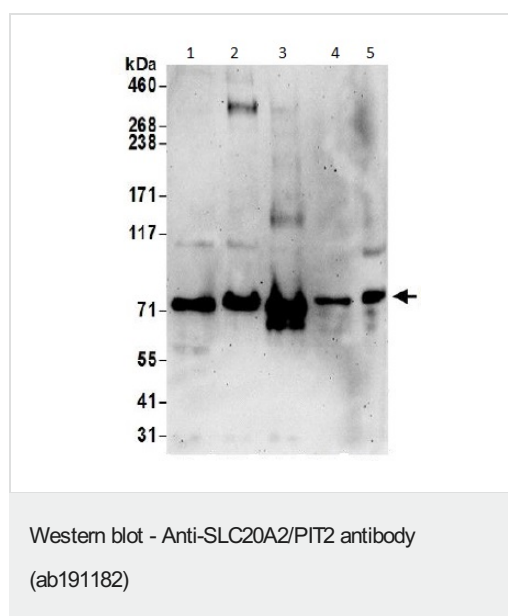
The Abpromise guarantee Our **Abpromise guarantee** covers the use of ab191182 in the following tested applications. The application notes include recommended starting dilutions; optimal dilutions/concentrations should be determined by the end user.

Application	Abreviews	Notes
WB		1/2000 - 1/10000. Predicted molecular weight: 70 kDa.

Target

Function	Sodium-phosphate symporter which seems to play a fundamental housekeeping role in phosphate transport by absorbing phosphate from interstitial fluid for normal cellular functions such as cellular metabolism, signal transduction, and nucleic acid and lipid synthesis. In vitro, sodium-dependent phosphate uptake is not significantly affected by acidic and alkaline conditions, however sodium-independent phosphate uptake occurs at acidic conditions. May play a role in extracellular matrix, cartilage and vascular calcification. Functions as a retroviral receptor and confers human cells susceptibility to infection to amphotropic murine leukemia virus (A-MuLV), 10A1 murine leukemia virus (10A1 MLV) and some feline leukemia virus subgroup B (FeLV-B) variants.
Tissue specificity	Ubiquitously expressed.
Sequence similarities	Belongs to the inorganic phosphate transporter (PiT) (TC 2.A.20) family.
Cellular localization	Cell membrane.

Images



All lanes : Anti-SLC20A2/PIT2 antibody (ab191182) at 0.1 µg/ml

Lane 1 : Whole cell lysate from HeLa cells

Lane 2 : Whole cell lysate from 293T cells

Lane 3 : Whole cell lysate from Jurkat cells

Lane 4 : Whole cell lysate from TCMK-1 cells

Lane 5 : Whole cell lysate from NIH3T3 cells

Lysates/proteins at 50 µg per lane.

Developed using the ECL technique.

Predicted band size: 70 kDa

Exposure time: 3 minutes

Please note: All products are "FOR RESEARCH USE ONLY. NOT FOR USE IN DIAGNOSTIC PROCEDURES"

Our Abpromise to you: Quality guaranteed and expert technical support

- Replacement or refund for products not performing as stated on the datasheet
- Valid for 12 months from date of delivery
- Response to your inquiry within 24 hours
- We provide support in Chinese, English, French, German, Japanese and Spanish
- Extensive multi-media technical resources to help you
- We investigate all quality concerns to ensure our products perform to the highest standards

If the product does not perform as described on this datasheet, we will offer a refund or replacement. For full details of the Abpromise, please visit <https://www.abcam.com/abpromise> or contact our technical team.

Terms and conditions

- Guarantee only valid for products bought direct from Abcam or one of our authorized distributors