

Product datasheet

Anti-SLC26A8 antibody ab97782

[1 References](#) [2 Images](#)

Overview

Product name	Anti-SLC26A8 antibody
Description	Rabbit polyclonal to SLC26A8
Host species	Rabbit
Tested applications	Suitable for: WB, IHC-P
Species reactivity	Reacts with: Human
Immunogen	Recombinant fragment, corresponding to a sequence within amino acids 613-860 of Human SLC26A8 (NP_443193).
Positive control	A431, H1299, HeLa, HepG2, MOLT4 and Raji whole cell lysates; DLD1 xenograft tissue.
General notes	<p>The Life Science industry has been in the grips of a reproducibility crisis for a number of years. Abcam is leading the way in addressing this with our range of recombinant monoclonal antibodies and knockout edited cell lines for gold-standard validation. Please check that this product meets your needs before purchasing.</p> <p>If you have any questions, special requirements or concerns, please send us an inquiry and/or contact our Support team ahead of purchase. Recommended alternatives for this product can be found below, along with publications, customer reviews and Q&As</p>

Properties

Form	Liquid
Storage instructions	Shipped at 4°C. Upon delivery aliquot and store at -20°C or -80°C. Avoid repeated freeze / thaw cycles.
Storage buffer	pH: 7.00 Preservative: 0.01% Thimerosal (merthiolate) Constituents: 78.99% PBS, 1% BSA, 20% Glycerol (glycerin, glycerine)
Purity	Immunogen affinity purified
Clonality	Polyclonal
Isotype	IgG

Applications

The Abpromise guarantee

Our **Abpromise guarantee** covers the use of ab97782 in the following tested applications.

The application notes include recommended starting dilutions; optimal dilutions/concentrations should be determined by the end user.

Application	Abreviews	Notes
WB		1/500 - 1/3000. Predicted molecular weight: 109 kDa.
IHC-P		Use at an assay dependent concentration.

Target

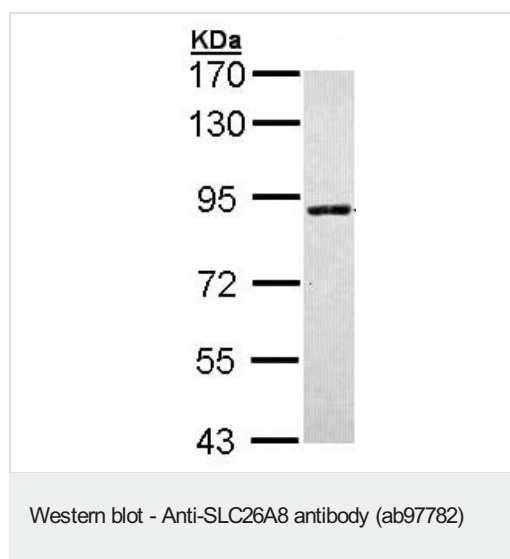
Relevance

SLC26A8 encodes a member of the SLC26 gene family of anion transporters. Family members are well conserved in gene structure and protein length yet have markedly different tissue expression patterns. The expression of this gene appears to be restricted to spermatocytes. Alternatively spliced transcript variants that encode different isoforms have been described.

Cellular localization

Membrane; Multi-pass membrane protein. Note: Located at the annulus ring structure within the sperm cell.

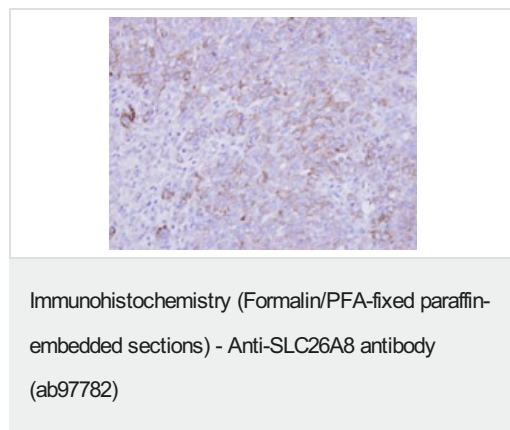
Images



Anti-SLC26A8 antibody (ab97782) at 1/1000 dilution + MOLT4 whole cell lysate at 30 µg

Predicted band size: 109 kDa

7.5% SDS-PAGE.



ab97782 at 1/500 dilution staining SLC26A8 in DLD1 xenograft by Immunohistochemistry, Paraffin-embedded tissue.

Please note: All products are "FOR RESEARCH USE ONLY. NOT FOR USE IN DIAGNOSTIC PROCEDURES"

Our Abpromise to you: Quality guaranteed and expert technical support

- Replacement or refund for products not performing as stated on the datasheet
- Valid for 12 months from date of delivery
- Response to your inquiry within 24 hours

- We provide support in Chinese, English, French, German, Japanese and Spanish
- Extensive multi-media technical resources to help you
- We investigate all quality concerns to ensure our products perform to the highest standards

If the product does not perform as described on this datasheet, we will offer a refund or replacement. For full details of the Abpromise, please visit <https://www.abcam.com/abpromise> or contact our technical team.

Terms and conditions

- Guarantee only valid for products bought direct from Abcam or one of our authorized distributors