


Product datasheet

Anti-SLC2A4RG antibody ab86756

2 Images

Overview

Product name	Anti-SLC2A4RG antibody
Description	Rabbit polyclonal to SLC2A4RG
Host species	Rabbit
Tested applications	Suitable for: ICC/IF, WB
Species reactivity	Reacts with: Human Predicted to work with: Horse, Chimpanzee, Macaque monkey, Gorilla 
Immunogen	Synthetic peptide corresponding to Human SLC2A4RG aa 200-300 conjugated to keyhole limpet haemocyanin. (Peptide available as ab136159)
Positive control	This antibody gave a positive signal in Human Skeletal Muscle tissue lysate. This antibody gave a positive result in IF in the following Methanol fixed cell line: MCF-7
General notes	<p>The Life Science industry has been in the grips of a reproducibility crisis for a number of years. Abcam is leading the way in addressing this with our range of recombinant monoclonal antibodies and knockout edited cell lines for gold-standard validation. Please check that this product meets your needs before purchasing.</p> <p>If you have any questions, special requirements or concerns, please send us an inquiry and/or contact our Support team ahead of purchase. Recommended alternatives for this product can be found below, along with publications, customer reviews and Q&As</p>

Properties

Form	Liquid
Storage instructions	Shipped at 4°C. Store at +4°C short term (1-2 weeks). Upon delivery aliquot. Store at -20°C or -80°C. Avoid freeze / thaw cycle.
Storage buffer	pH: 7.40 Preservative: 0.02% Sodium azide Constituent: PBS

Batches of this product that have a concentration < 1mg/ml may have BSA added as a stabilising agent. If you would like information about the formulation of a specific lot, please contact our scientific support team who will be happy to help.

Purity	Immunogen affinity purified
Clonality	Polyclonal
Isotype	IgG

Applications

The Abpromise guarantee Our **Abpromise guarantee** covers the use of ab86756 in the following tested applications. The application notes include recommended starting dilutions; optimal dilutions/concentrations should be determined by the end user.

Application	Abreviews	Notes
ICC/IF		Use a concentration of 5 µg/ml.
WB		Use a concentration of 1 µg/ml. Detects a band of approximately 41 kDa (predicted molecular weight: 41 kDa).

Target

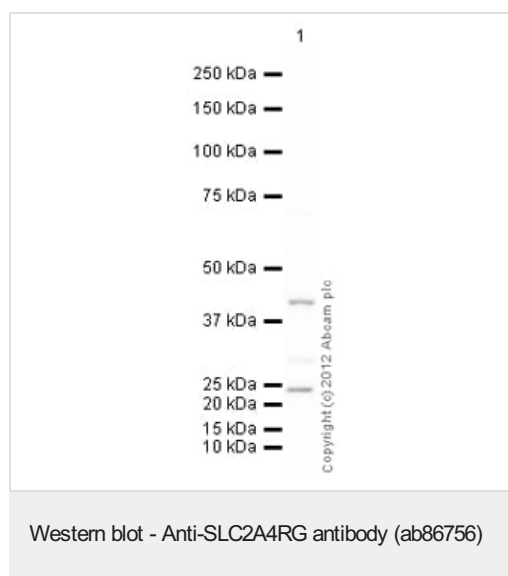
Function Transcription factor involved in SLC2A4 and HD gene transactivation. Binds to the consensus sequence 5'-GCCGGCG-3'.

Tissue specificity According to PubMed:14630949, expressed in heart, skeletal muscle, liver, kidney and pancreas; undetectable in lung, placenta or brain. According to PubMed:14625278, ubiquitously expressed, with lowest expression in brain and ileum.

Sequence similarities Contains 1 C2H2-type zinc finger.

Cellular localization Cytoplasm. Nucleus. Shuttles between the cytoplasm and the nucleus.

Images



Anti-SLC2A4RG antibody (ab86756) at 1 µg/ml + Human skeletal muscle tissue lysate - total protein (**ab29330**) at 10 µg

Secondary

Goat Anti-Rabbit IgG H&L (HRP) preadsorbed (**ab97080**) at 1/5000 dilution

Developed using the ECL technique.

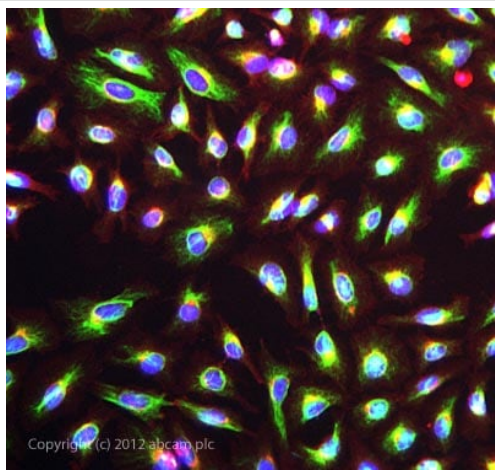
Performed under reducing conditions.

Predicted band size: 41 kDa

Observed band size: 41 kDa

Additional bands at: 24 kDa. We are unsure as to the identity of these extra bands.

Exposure time: 4 minutes



Copyright (c) 2012 abcam plc

Immunocytochemistry/ Immunofluorescence - Anti-SLC2A4RG antibody (ab86756)

ICC/IF image of ab86756 stained HeLa cells. The cells were 100% methanol fixed (5 min) and then incubated in 1%BSA / 10% normal goat serum / 0.3M glycine in 0.1% PBS-Tween for 1h to permeabilise the cells and block non-specific protein-protein interactions. The cells were then incubated with the antibody ab86756 at 5µg/ml overnight at +4°C. The secondary antibody (green) was DyLight® 488 goat anti- rabbit (**ab96899**) IgG (H+L) used at a 1/250 dilution for 1h. Alexa Fluor® 594 WGA was used to label plasma membranes (red) at a 1/200 dilution for 1h. DAPI was used to stain the cell nuclei (blue) at a concentration of 1.43µM. This antibody also gave a positive result in formaldehyde fixed (4%, 10min) HeLa, Hek293, HepG2, and MCF-7 cell types, and in Methanol fixed (100%, 5min) Hek293 cell types.

Please note: All products are "FOR RESEARCH USE ONLY. NOT FOR USE IN DIAGNOSTIC PROCEDURES"

Our Abpromise to you: Quality guaranteed and expert technical support

- Replacement or refund for products not performing as stated on the datasheet
- Valid for 12 months from date of delivery
- Response to your inquiry within 24 hours
- We provide support in Chinese, English, French, German, Japanese and Spanish
- Extensive multi-media technical resources to help you
- We investigate all quality concerns to ensure our products perform to the highest standards

If the product does not perform as described on this datasheet, we will offer a refund or replacement. For full details of the Abpromise, please visit <https://www.abcam.com/abpromise> or contact our technical team.

Terms and conditions

- Guarantee only valid for products bought direct from Abcam or one of our authorized distributors