

Product datasheet

Anti-SLC36A1 antibody - N-terminal ab189441

3 Images

Overview

Product name	Anti-SLC36A1 antibody - N-terminal
Description	Rabbit polyclonal to SLC36A1 - N-terminal
Host species	Rabbit
Tested applications	Suitable for: Flow Cyt (Intra), IHC-P, ICC/IF, WB
Species reactivity	Reacts with: Human
Immunogen	Synthetic peptide within Human SLC36A1 aa 1-100 (N terminal) conjugated to keyhole limpet haemocyanin. The exact immunogen sequence used to generate this antibody is proprietary information. If additional detail on the immunogen is needed to determine the suitability of the antibody for your needs, please contact our Scientific Support team to discuss your requirements. Database link: Q7Z2H8
Positive control	IHC-P: Human kidney tissue. ICC/IF: NCI-460 cells. Flow Cyt (Intra): NCI-460 cells.
General notes	<p>The Life Science industry has been in the grips of a reproducibility crisis for a number of years. Abcam is leading the way in addressing this with our range of recombinant monoclonal antibodies and knockout edited cell lines for gold-standard validation. Please check that this product meets your needs before purchasing.</p> <p>If you have any questions, special requirements or concerns, please send us an inquiry and/or contact our Support team ahead of purchase. Recommended alternatives for this product can be found below, along with publications, customer reviews and Q&As</p>

 [Run BLAST with](#)

 [Run BLAST with](#)

Properties

Form	Liquid
Storage instructions	Shipped at 4°C. Store at +4°C short term (1-2 weeks). Upon delivery aliquot. Store at -20°C long term. Avoid freeze / thaw cycle.
Storage buffer	pH: 7.4 Preservative: 0.09% Sodium azide Constituent: 99% PBS
Purity	Immunogen affinity purified
Clonality	Polyclonal

Isotype

IgG

Applications

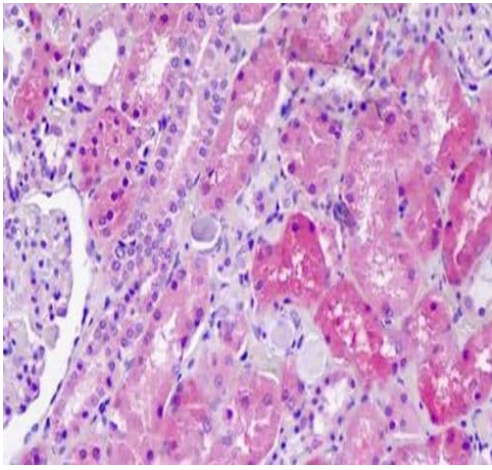
The Abpromise guarantee Our **Abpromise guarantee** covers the use of ab189441 in the following tested applications. The application notes include recommended starting dilutions; optimal dilutions/concentrations should be determined by the end user.

Application	Abreviews	Notes
Flow Cyt (Intra)		1/10 - 1/50. ab171870 - Rabbit polyclonal IgG, is suitable for use as an isotype control with this antibody.
IHC-P		Use a concentration of 5 µg/ml. Perform heat mediated antigen retrieval before commencing with IHC staining protocol.
ICC/IF		1/10 - 1/50.
WB		Use at an assay dependent concentration.

Target

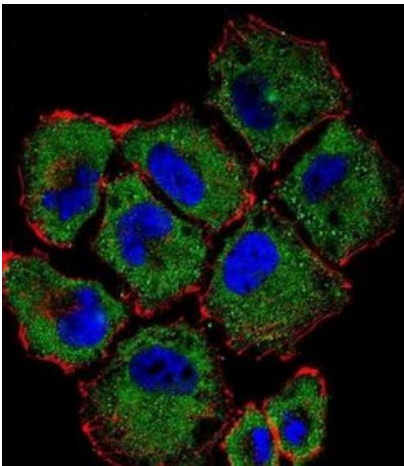
Function	Neutral amino acid/proton symporter. Has a pH-dependent electrogenic transport activity for small amino acids such as glycine, alanine and proline. Besides small apolar L-amino acids, it also recognize their D-enantiomers and selected amino acid derivatives such as gamma-aminobutyric acid.
Sequence similarities	Belongs to the amino acid/polyamine transporter 2 family.
Cellular localization	Cell membrane. Lysosome membrane.

Images



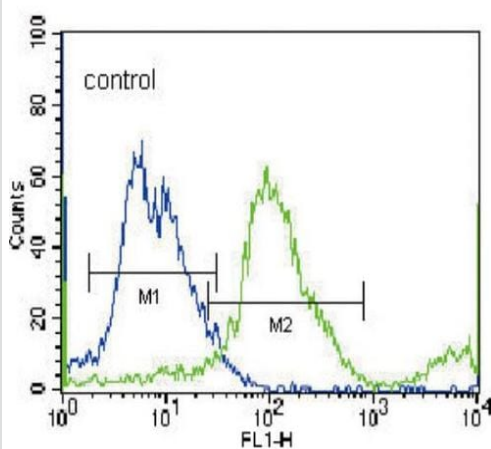
Immunohistochemistry (Formalin/PFA-fixed paraffin-embedded sections) - Anti-SLC36A1 antibody - N-terminal (ab189441)

Immunohistochemical analysis of formalin/PFA-fixed paraffin-embedded human kidney sections labeling SLC36A1 using ab189441 at 5 µg/ml.



Immunocytochemistry/ Immunofluorescence - Anti-SLC36A1 antibody - N-terminal (ab189441)

Immunofluorescent staining of NCI-460 cells labeling SLC36A1 using ab189441 at 1/10 dilution, followed by Alexa Fluor 488-conjugated goat anti-rabbit IgG (green). Actin filaments have been labeled with Alexa Fluor 555 phalloidin (red). DAPI was used to stain the cell nuclear (blue).



Flow Cytometry (Intracellular) - Anti-SLC36A1 antibody - N-terminal (ab189441)

Intracellular flow cytometric analysis of NCI-460 cells (right histogram) compared to a negative control cell (left histogram) labeling SLC36A1 using ab189441 at 1/10 dilution. FITC-conjugated donkey-anti-rabbit secondary antibodies were used for the analysis.

Please note: All products are "FOR RESEARCH USE ONLY. NOT FOR USE IN DIAGNOSTIC PROCEDURES"

Our Abpromise to you: Quality guaranteed and expert technical support

- Replacement or refund for products not performing as stated on the datasheet
- Valid for 12 months from date of delivery
- Response to your inquiry within 24 hours
- We provide support in Chinese, English, French, German, Japanese and Spanish
- Extensive multi-media technical resources to help you
- We investigate all quality concerns to ensure our products perform to the highest standards

If the product does not perform as described on this datasheet, we will offer a refund or replacement. For full details of the Abpromise, please visit <https://www.abcam.com/abpromise> or contact our technical team.

Terms and conditions

- Guarantee only valid for products bought direct from Abcam or one of our authorized distributors