


Product datasheet

Anti-SLC40A1 antibody ab78066

★★★★★ [3 Abreviews](#) [23 References](#) [3 Images](#)

Overview

Product name	Anti-SLC40A1 antibody
Description	Rabbit polyclonal to SLC40A1
Host species	Rabbit
Tested applications	Suitable for: IHC-P
Species reactivity	Reacts with: Human Predicted to work with: Rat 
Immunogen	Synthetic peptide corresponding to Human SLC40A1 (N terminal).
General notes	<p>The Life Science industry has been in the grips of a reproducibility crisis for a number of years. Abcam is leading the way in addressing this with our range of recombinant monoclonal antibodies and knockout edited cell lines for gold-standard validation. Please check that this product meets your needs before purchasing.</p> <p>If you have any questions, special requirements or concerns, please send us an inquiry and/or contact our Support team ahead of purchase. Recommended alternatives for this product can be found below, along with publications, customer reviews and Q&As</p>

Properties

Form	Liquid
Storage instructions	Shipped at 4°C. Upon delivery aliquot and store at -20°C. Avoid repeated freeze / thaw cycles.
Storage buffer	Preservative: 0.01% Sodium azide Constituents: 50% Glycerol, PBS
Purity	Immunogen affinity purified
Clonality	Polyclonal
Isotype	IgG

Applications

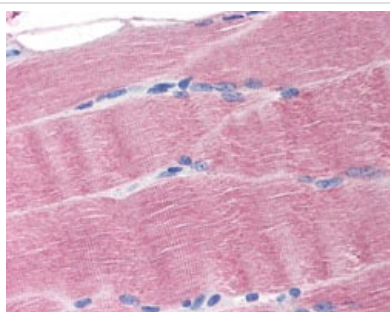
The Abpromise guarantee Our **Abpromise guarantee** covers the use of ab78066 in the following tested applications. The application notes include recommended starting dilutions; optimal dilutions/concentrations should be determined by the end user.

Application	Abreviews	Notes
IHC-P	★★★★★ (2)	Use a concentration of 20 µg/ml. Perform heat mediated antigen retrieval with citrate buffer pH 6 before commencing with IHC staining protocol.

Target

Function	May be involved in iron export from duodenal epithelial cell and also in transfer of iron between maternal and fetal circulation. Mediates iron efflux in the presence of a ferroxidase (hephaestin and/or ceruloplasmin).
Tissue specificity	Expressed in placenta, intestine, muscle and spleen.
Involvement in disease	Defects in SLC40A1 are the cause of hemochromatosis type 4 (HFE4) [MIM:606069]. HFE4 is an autosomal dominant iron-loading disorder characterized by early iron accumulation in reticuloendothelial cells and a marked increase in serum ferritin before elevation of the transferrin saturation.
Sequence similarities	Belongs to the SLC40A transporter family.
Cellular localization	Cell membrane. Localized to the basolateral membrane of polarized epithelial cells.

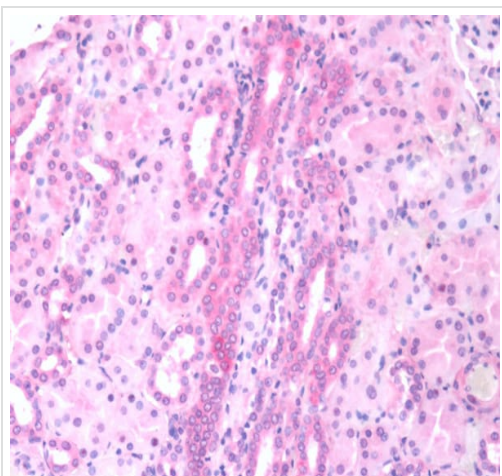
Images



Immunohistochemistry (Formalin/PFA-fixed paraffin-embedded sections) - Anti-SLC40A1 antibody (ab78066)

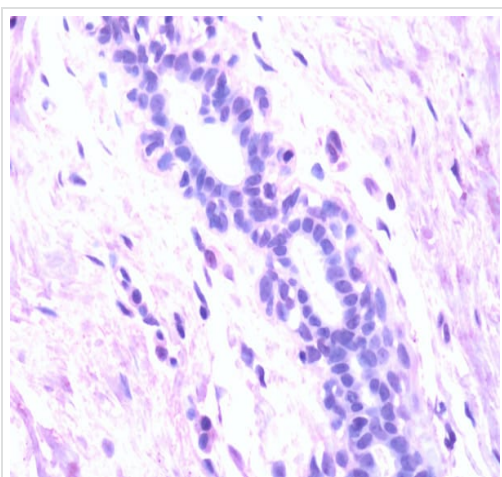
ab78066, at 20µg/ml, staining SLC40A1 in human skeletal muscle by Immunohistochemistry using formalin-fixed, paraffin-embedded tissue.

A heat induced antigen retrieval step was performed using pH 6.0 citrate buffer. After incubation with the primary antibody, slides were incubated with biotinylated secondary antibody, followed by alkaline phosphatase-streptavidin and chromogen.



Immunohistochemical staining of paraffin embedded, formalin fixed, kidney renal tubular epithelium using ab78066 at 20 µg/mL.

Immunohistochemistry (Formalin/PFA-fixed paraffin-embedded sections) - Anti-SLC40A1 antibody (ab78066)



Negative control - immunohistochemical staining of paraffin embedded, formalin fixed, breast epithelium using ab78066 at 20 µg/mL.

Immunohistochemistry (Formalin/PFA-fixed paraffin-embedded sections) - Anti-SLC40A1 antibody (ab78066)

Please note: All products are "FOR RESEARCH USE ONLY. NOT FOR USE IN DIAGNOSTIC PROCEDURES"

Our Abpromise to you: Quality guaranteed and expert technical support

- Replacement or refund for products not performing as stated on the datasheet
- Valid for 12 months from date of delivery
- Response to your inquiry within 24 hours

- We provide support in Chinese, English, French, German, Japanese and Spanish
- Extensive multi-media technical resources to help you
- We investigate all quality concerns to ensure our products perform to the highest standards

If the product does not perform as described on this datasheet, we will offer a refund or replacement. For full details of the Abpromise, please visit <https://www.abcam.com/abpromise> or contact our technical team.

Terms and conditions

- Guarantee only valid for products bought direct from Abcam or one of our authorized distributors