


Product datasheet

Anti-SLC5A3 antibody ab113245

[3 References](#) [3 Images](#)

Overview

Product name	Anti-SLC5A3 antibody
Description	Rabbit polyclonal to SLC5A3
Host species	Rabbit
Tested applications	Suitable for: WB, IHC-P
Species reactivity	Reacts with: Human Predicted to work with: Mouse, Rat 
Immunogen	Synthetic peptide within Human SLC5A3 aa 221-270 (internal sequence) conjugated to keyhole limpet haemocyanin. The exact sequence is proprietary. Database link: P53794
Positive control	Human prostate and Human uterus tissue and extracts from HUVEC cells
General notes	<p>The Life Science industry has been in the grips of a reproducibility crisis for a number of years. Abcam is leading the way in addressing this with our range of recombinant monoclonal antibodies and knockout edited cell lines for gold-standard validation. Please check that this product meets your needs before purchasing.</p> <p>If you have any questions, special requirements or concerns, please send us an inquiry and/or contact our Support team ahead of purchase. Recommended alternatives for this product can be found below, along with publications, customer reviews and Q&As</p>

Properties

Form	Liquid
Storage instructions	Shipped at 4°C. Store at -20°C. Stable for 12 months at -20°C.
Storage buffer	pH: 7.40 Preservative: 0.02% Sodium azide Constituents: 0.88% Sodium chloride, 50% Glycerol (glycerin, glycerine), 48% PBS
Purity	Immunogen affinity purified
Clonality	Polyclonal
Isotype	IgG

Applications

The Abpromise guarantee

Our **Abpromise guarantee** covers the use of ab113245 in the following tested applications.

The application notes include recommended starting dilutions; optimal dilutions/concentrations should be determined by the end user.

Application	Abreviews	Notes
WB		1/500 - 1/1000. Predicted molecular weight: 80 kDa.
IHC-P		Use a concentration of 5 µg/ml.

Target

Function

Prevents intracellular accumulation of high concentrations of myo-inositol (an osmolyte) that result in impairment of cellular function.

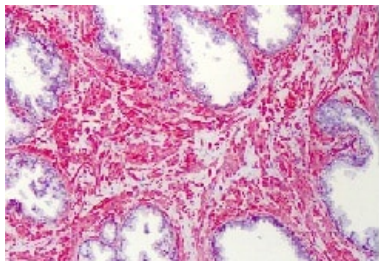
Sequence similarities

Belongs to the sodium:solute symporter (SSF) (TC 2.A.21) family.

Cellular localization

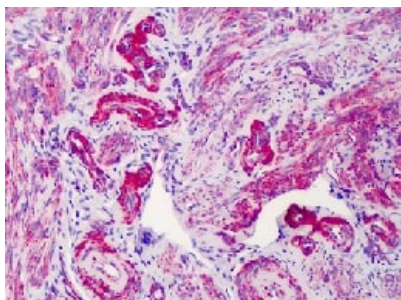
Membrane.

Images



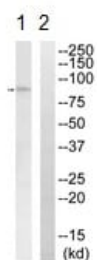
ab113245, at 5 µg/ml, staining SLC5A3 in formalin fixed, paraffin embedded Human prostate tissue.

Immunohistochemistry (Formalin/PFA-fixed paraffin-embedded sections) - Anti-SLC5A3 antibody (ab113245)



ab113245, at 5 µg/ml, staining SLC5A3 in formalin fixed, paraffin embedded Human uterus tissue.

Immunohistochemistry (Formalin/PFA-fixed paraffin-embedded sections) - Anti-SLC5A3 antibody (ab113245)



Western blot - Anti-SLC5A3 antibody (ab113245)

All lanes : Anti-SLC5A3 antibody (ab113245) at 1/500 dilution

Lane 1 : HUVEC cell extract

Lane 2 : HUVEC cell extract with synthetic peptide

Predicted band size: 80 kDa

Please note: All products are "FOR RESEARCH USE ONLY. NOT FOR USE IN DIAGNOSTIC PROCEDURES"

Our Abpromise to you: Quality guaranteed and expert technical support

- Replacement or refund for products not performing as stated on the datasheet
- Valid for 12 months from date of delivery
- Response to your inquiry within 24 hours
- We provide support in Chinese, English, French, German, Japanese and Spanish
- Extensive multi-media technical resources to help you
- We investigate all quality concerns to ensure our products perform to the highest standards

If the product does not perform as described on this datasheet, we will offer a refund or replacement. For full details of the Abpromise, please visit <https://www.abcam.com/abpromise> or contact our technical team.

Terms and conditions

- Guarantee only valid for products bought direct from Abcam or one of our authorized distributors