

## Product datasheet

# Anti-SLC7A6 antibody - N-terminal ab223270

1 Image

### Overview

---

<b>Product name</b>	Anti-SLC7A6 antibody - N-terminal
<b>Description</b>	Goat polyclonal to SLC7A6 - N-terminal
<b>Host species</b>	Goat
<b>Tested applications</b>	<b>Suitable for:</b> WB
<b>Species reactivity</b>	<b>Reacts with:</b> Human
<b>Immunogen</b>	Synthetic peptide corresponding to Human SLC7A6 aa 1-100 (N terminal) (Cysteine residue). (NP_003974.3). Database link: <a href="#">Q92536</a>

 [Run BLAST with](#)

 [Run BLAST with](#)

**Positive control** WB: Human placenta lysate.

**General notes** Reported variants represent identical protein: NP\_003974.3, NP\_001070253.1.

The Life Science industry has been in the grips of a reproducibility crisis for a number of years. Abcam is leading the way in addressing this with our range of recombinant monoclonal antibodies and knockout edited cell lines for gold-standard validation. Please check that this product meets your needs before purchasing.

If you have any questions, special requirements or concerns, please send us an inquiry and/or contact our Support team ahead of purchase. Recommended alternatives for this product can be found below, along with publications, customer reviews and Q&As

### Properties

---

<b>Form</b>	Liquid
<b>Storage instructions</b>	Shipped at 4°C. Store at +4°C short term (1-2 weeks). Upon delivery aliquot. Store at -20°C long term. Avoid freeze / thaw cycle.
<b>Storage buffer</b>	pH: 7.30 Preservative: 0.02% Sodium azide Constituents: 0.5% BSA, Tris buffered saline
<b>Purity</b>	Immunogen affinity purified
<b>Purification notes</b>	ab223270 was purified from goat serum by ammonium sulphate precipitation followed by antigen affinity chromatography using the immunizing peptide.
<b>Clonality</b>	Polyclonal

Isotype

IgG

## Applications

### The Abpromise guarantee

Our **Abpromise guarantee** covers the use of ab223270 in the following tested applications.

The application notes include recommended starting dilutions; optimal dilutions/concentrations should be determined by the end user.

Application	Abreviews	Notes
WB		Use a concentration of 0.3 - 1 µg/ml. Detects a band of approximately 55-58 kDa (predicted molecular weight: 56 kDa). 1 hour primary incubation is recommended for this product.

## Target

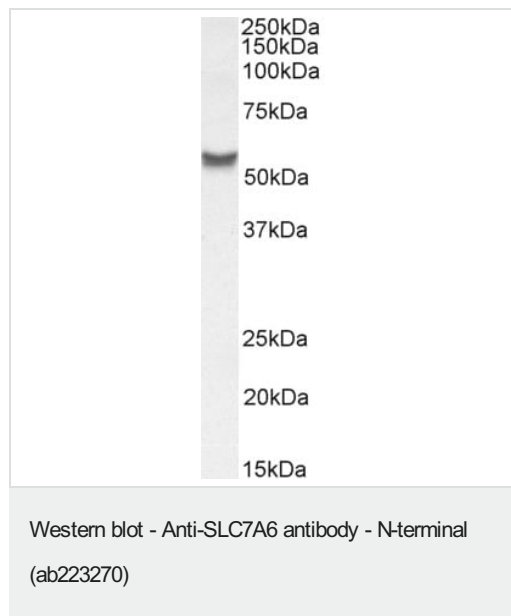
### Relevance

SLC7A6 is involved in the sodium-independent uptake of dibasic amino acids and sodium-dependent uptake of some neutral amino acids. It also acts as an arginine/glutamine exchanger, following an antiport mechanism for amino acid transport, influencing arginine release in exchange for extracellular amino acids.

### Cellular localization

Basolateral cell membrane; Multi-pass membrane protein.

## Images



Anti-SLC7A6 antibody - N-terminal (ab223270) at 1 µg/ml + Human placenta lysate (in RIPA buffer) at 35 µg

Developed using the ECL technique.

**Predicted band size:** 56 kDa

**Observed band size:** 55-58 kDa

Primary incubation was 1 hour.

**Please note:** All products are "FOR RESEARCH USE ONLY. NOT FOR USE IN DIAGNOSTIC PROCEDURES"

## Our Abpromise to you: Quality guaranteed and expert technical support

- Replacement or refund for products not performing as stated on the datasheet

- Valid for 12 months from date of delivery
- Response to your inquiry within 24 hours
  
- We provide support in Chinese, English, French, German, Japanese and Spanish
- Extensive multi-media technical resources to help you
- We investigate all quality concerns to ensure our products perform to the highest standards

If the product does not perform as described on this datasheet, we will offer a refund or replacement. For full details of the Abpromise, please visit <https://www.abcam.com/abpromise> or contact our technical team.

### **Terms and conditions**

---

- Guarantee only valid for products bought direct from Abcam or one of our authorized distributors