


Anti-SLD5 antibody ab101346

★☆☆☆☆ [1 Abreviews](#) [3 References](#) [4 Images](#)

Overview

Product name	Anti-SLD5 antibody
Description	Rabbit polyclonal to SLD5
Host species	Rabbit
Tested applications	Suitable for: WB, ICC/IF, IHC-P
Species reactivity	Reacts with: Mouse, Human Predicted to work with: Rat, Cow 
Immunogen	Recombinant fragment, corresponding to amino acids 1-198 of Human SLD5
Positive control	293T, A431, Jurkat cell lines
General notes	<p>The Life Science industry has been in the grips of a reproducibility crisis for a number of years. Abcam is leading the way in addressing this with our range of recombinant monoclonal antibodies and knockout edited cell lines for gold-standard validation. Please check that this product meets your needs before purchasing.</p> <p>If you have any questions, special requirements or concerns, please send us an inquiry and/or contact our Support team ahead of purchase. Recommended alternatives for this product can be found below, along with publications, customer reviews and Q&As</p>

Properties

Form	Liquid
Storage instructions	Shipped at 4°C. Upon delivery aliquot and store at -20°C. Avoid repeated freeze / thaw cycles.
Storage buffer	pH: 7.00 Preservative: 0.01% Thimerosal (merthiolate) Constituents: 1.21% Tris, 0.75% Glycine, 20% Glycerol (glycerin, glycerine)
Purity	Immunogen affinity purified
Clonality	Polyclonal
Isotype	IgG

Applications

The **Abpromise guarantee** Our **Abpromise guarantee** covers the use of ab101346 in the following tested applications.

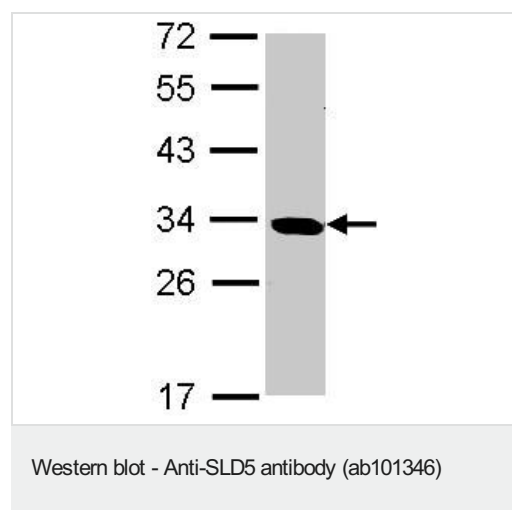
The application notes include recommended starting dilutions; optimal dilutions/concentrations should be determined by the end user.

Application	Abreviews	Notes
WB		1/1000 - 1/10000. Predicted molecular weight: 26 kDa.
ICC/IF	★☆☆☆☆ (1)	1/100 - 1/500.
IHC-P		1/100 - 1/500. Suggested antigen retrieval using heat mediated 10mM Citrate buffer (pH 6.0) or Tris-EDTA buffer (pH 8.0).

Target

Function	The GINS complex plays an essential role in the initiation of DNA replication, and progression of DNA replication forks. GINS4 is important for GINS complex assembly. GINS complex seems to bind preferentially to single-stranded DNA.
Sequence similarities	Belongs to the GINS4/SLD5 family.
Cellular localization	Cytoplasm. Nucleus.

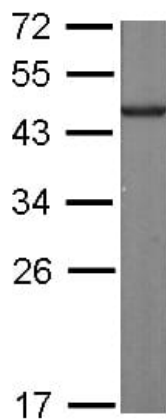
Images



Anti-SLD5 antibody (ab101346) at 1/1000 dilution + 293T whole cell lysate at 30 µg

Predicted band size: 26 kDa

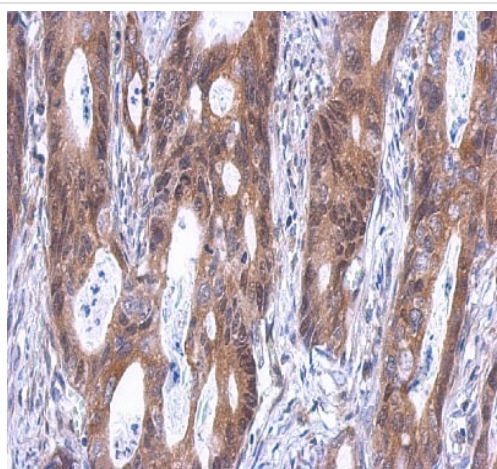
12% SDS PAGE



Western blot - Anti-SLD5 antibody (ab101346)

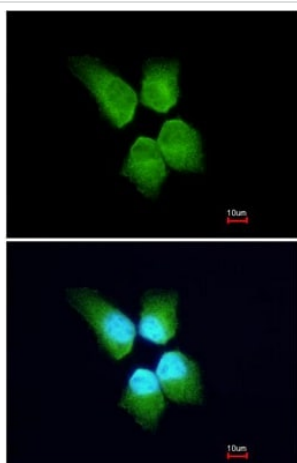
Anti-SLD5 antibody (ab101346) at 1/10000 dilution + Mouse heart at 50 µg

Predicted band size: 26 kDa



Immunohistochemistry (Formalin/PFA-fixed paraffin-embedded sections) - Anti-SLD5 antibody (ab101346)

ab101346 at 1/500 staining SLD5 in paraffin-embedded human gastric cancer.



Immunocytochemistry/ Immunofluorescence - Anti-SLD5 antibody (ab101346)

ab101346 at 1/200 staining paraformaldehyde-fixed A431 in IF. Bottom image costained with Hoechst 33342.

Please note: All products are "FOR RESEARCH USE ONLY. NOT FOR USE IN DIAGNOSTIC PROCEDURES"

Our Abpromise to you: Quality guaranteed and expert technical support

- Replacement or refund for products not performing as stated on the datasheet
- Valid for 12 months from date of delivery
- Response to your inquiry within 24 hours

- We provide support in Chinese, English, French, German, Japanese and Spanish
- Extensive multi-media technical resources to help you
- We investigate all quality concerns to ensure our products perform to the highest standards

If the product does not perform as described on this datasheet, we will offer a refund or replacement. For full details of the Abpromise, please visit <https://www.abcam.com/abpromise> or contact our technical team.

Terms and conditions

- Guarantee only valid for products bought direct from Abcam or one of our authorized distributors