

Anti-SLITRK5 antibody ab67309

[1 References](#) [1 Image](#)

Overview

Product name	Anti-SLITRK5 antibody
Description	Rabbit polyclonal to SLITRK5
Host species	Rabbit
Specificity	ab67309 is predicted to have no cross-reactivity to other SLITRK proteins.
Tested applications	Suitable for: WB
Species reactivity	Reacts with: Mouse
Immunogen	Synthetic peptide. This information is proprietary to Abcam and/or its suppliers.
Positive control	WB: 3T3 cell lysate.
General notes	<p>The Life Science industry has been in the grips of a reproducibility crisis for a number of years. Abcam is leading the way in addressing this with our range of recombinant monoclonal antibodies and knockout edited cell lines for gold-standard validation. Please check that this product meets your needs before purchasing.</p> <p>If you have any questions, special requirements or concerns, please send us an inquiry and/or contact our Support team ahead of purchase. Recommended alternatives for this product can be found below, along with publications, customer reviews and Q&As</p>

Properties

Form	Liquid
Storage instructions	Shipped at 4°C. Store at +4°C.
Storage buffer	pH: 7.2 Preservative: 0.02% Sodium azide Constituent: PBS
Purity	Immunogen affinity purified
Clonality	Polyclonal
Isotype	IgG

Applications

The **Abpromise guarantee** Our **Abpromise guarantee** covers the use of ab67309 in the following tested applications.

The application notes include recommended starting dilutions; optimal dilutions/concentrations should be determined by the end user.

Application	Abreviews	Notes
WB		Use a concentration of 0.5 - 1 µg/ml. Detects a band of approximately 160 kDa (predicted molecular weight: 107 kDa).

Target

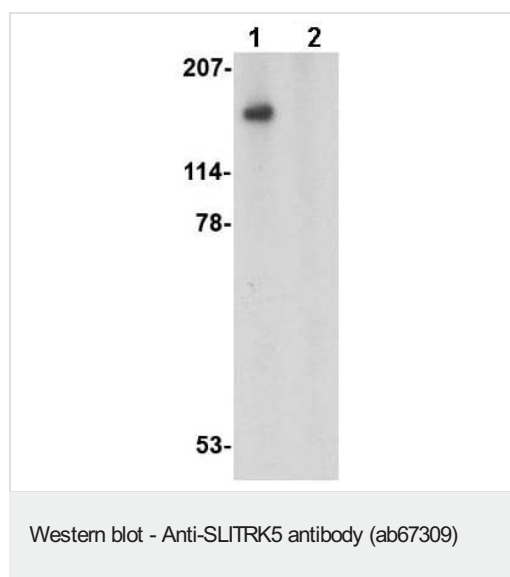
Relevance

SLIT and NTRK-like family 5 (SLITRK5) is a member a protein family consisting of six homologous transmembrane proteins (SLITRK1-6) that share two conserved leucine-rich repeat domains in the extracellular domain and have significant homology to Slit, a secreted axonal growth-controlling protein. These proteins are also homologous to trk neurotrophin receptors in their intracellular domains. Expression of SLITRK proteins is highly restricted to neural and brain tumor tissues, but varies within the protein family. Like every other SLITRK protein except SLITRK1, overexpression of SLITRK5 inhibited neurite outgrowth in cultured neurons, suggesting that these proteins are involved in the control of neurite outgrowth.

Cellular localization

Membrane; Single-pass type I membrane protein.

Images



All lanes : Anti-SLITRK5 antibody (ab67309) at 1 µg/ml

Lane 1 : 3T3 cell lysate with no blocking peptide

Lane 2 : 3T3 cell lysate with blocking peptide

Lysates/proteins at 15 µg per lane.

Predicted band size: 107 kDa

Observed band size: 160 kDa

Please note: All products are "FOR RESEARCH USE ONLY. NOT FOR USE IN DIAGNOSTIC PROCEDURES"

Our Abpromise to you: Quality guaranteed and expert technical support

- Replacement or refund for products not performing as stated on the datasheet
- Valid for 12 months from date of delivery
- Response to your inquiry within 24 hours
- We provide support in Chinese, English, French, German, Japanese and Spanish
- Extensive multi-media technical resources to help you

- We investigate all quality concerns to ensure our products perform to the highest standards

If the product does not perform as described on this datasheet, we will offer a refund or replacement. For full details of the Abpromise, please visit <https://www.abcam.com/abpromise> or contact our technical team.

Terms and conditions

- Guarantee only valid for products bought direct from Abcam or one of our authorized distributors