

Product datasheet

Anti-SLK antibody ab226986

3 Images

Overview

Product name	Anti-SLK antibody
Description	Rabbit polyclonal to SLK
Host species	Rabbit
Tested applications	Suitable for: WB, ICC/IF
Species reactivity	Reacts with: Human
Immunogen	Recombinant fragment within Human SLK (internal sequence). The exact sequence is proprietary. Database link: Q9H2G2
Positive control	WB: A549 and H1299 whole cell extracts. ICC/IF: H1299 cells.
General notes	<p>The Life Science industry has been in the grips of a reproducibility crisis for a number of years. Abcam is leading the way in addressing this with our range of recombinant monoclonal antibodies and knockout edited cell lines for gold-standard validation. Please check that this product meets your needs before purchasing.</p> <p>If you have any questions, special requirements or concerns, please send us an inquiry and/or contact our Support team ahead of purchase. Recommended alternatives for this product can be found below, along with publications, customer reviews and Q&As</p>

Properties

Form	Liquid
Storage instructions	Shipped at 4°C. Store at +4°C short term (1-2 weeks). Upon delivery aliquot. Store at -20°C long term. Avoid freeze / thaw cycle.
Storage buffer	<p>pH: 7.00</p> <p>Preservative: 0.025% Proclin 300</p> <p>Constituents: 79% PBS, 20% Glycerol (glycerin, glycerine)</p>
Purity	Immunogen affinity purified
Clonality	Polyclonal
Isotype	IgG

Applications

The Abpromise guarantee

Our **Abpromise guarantee** covers the use of ab226986 in the following tested applications.

The application notes include recommended starting dilutions; optimal dilutions/concentrations should be determined by the end user.

Application	Abreviews	Notes
WB		1/500 - 1/3000. Predicted molecular weight: 143 kDa.
ICC/IF		1/100 - 1/1000.

Target

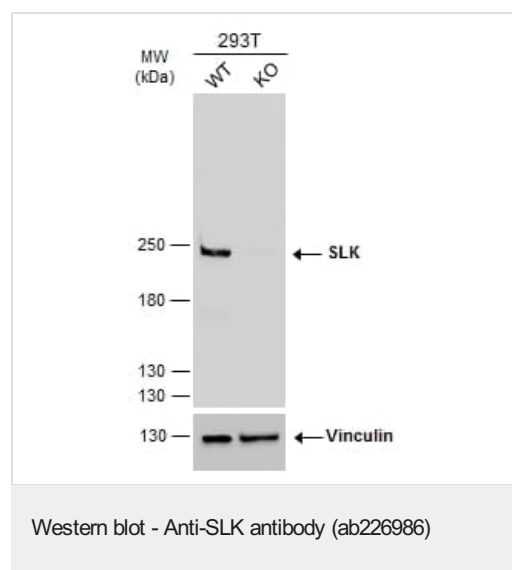
Relevance

SLK is a serine/threonine protein kinase that is involved in cytoskeletal reorganization and apoptosis. SLK is a microtubule-associated protein inducing actin stress fiber disassembly, it also mediates apoptosis and it is ubiquitously expressed; highest expression is found in heart and in skeletal muscle. There are two named isoforms.

Cellular localization

Cytoplasmic

Images



All lanes : Anti-SLK antibody (ab226986) at 1/1000 dilution

Lane 1 : WT 293T cell extracts

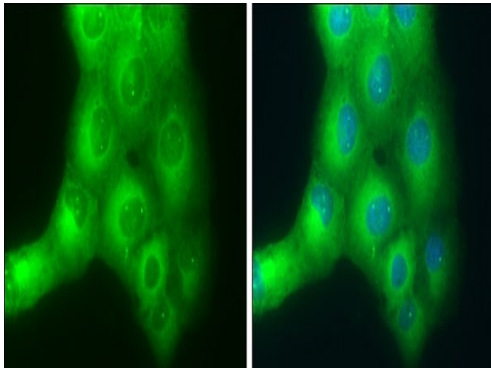
Lane 2 : SLK Knockout 293T cell extracts

Lysates/proteins at 30 µg per lane.

Secondary

All lanes : HRP-conjugated anti-rabbit IgG

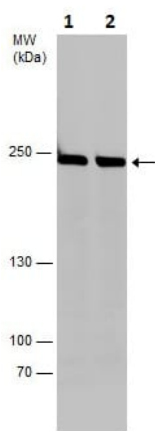
Predicted band size: 143 kDa



Immunocytochemistry/ Immunofluorescence - Anti-SLK antibody (ab226986)

4% paraformaldehyde-fixed H1299 cells stained for SLK (green) using ab226986 at 1/500 dilution in ICC/IF.

Blue: Hoechst 33342 staining.



Western blot - Anti-SLK antibody (ab226986)

All lanes : Anti-SLK antibody (ab226986) at 1/1000 dilution

Lane 1 : A549 (human lung carcinoma cell line) cell lysate

Lane 2 : H1299 cell lysate

Lysates/proteins at 30 µg per lane.

Predicted band size: 143 kDa

5% SDS-PAGE gel.

Please note: All products are "FOR RESEARCH USE ONLY. NOT FOR USE IN DIAGNOSTIC PROCEDURES"

Our Abpromise to you: Quality guaranteed and expert technical support

- Replacement or refund for products not performing as stated on the datasheet
- Valid for 12 months from date of delivery
- Response to your inquiry within 24 hours
- We provide support in Chinese, English, French, German, Japanese and Spanish
- Extensive multi-media technical resources to help you
- We investigate all quality concerns to ensure our products perform to the highest standards

If the product does not perform as described on this datasheet, we will offer a refund or replacement. For full details of the Abpromise, please visit <https://www.abcam.com/abpromise> or contact our technical team.

Terms and conditions

- Guarantee only valid for products bought direct from Abcam or one of our authorized distributors