

Product datasheet

Anti-SLPI antibody [31] ab17157

★★★★★ [1 Abreviews](#) [6 References](#) [1 Image](#)

Overview

Product name	Anti-SLPI antibody [31]
Description	Mouse monoclonal [31] to SLPI
Host species	Mouse
Specificity	The reactivity of the antibody with the isolated domains was evaluated using isolated domains of SLPI obtained by cleavage using partial acidic hydrolysis. Therefore, it is possible that the antibody will recognize other SLPI cleavage products generated by e.g. (microbial) proteases.
Tested applications	Suitable for: IHC-Fr
Species reactivity	Reacts with: Human
Immunogen	Full length native protein (purified) corresponding to Human SLPI. SLPI purified from sputum
Positive control	PMN lysate
General notes	<p>The Life Science industry has been in the grips of a reproducibility crisis for a number of years. Abcam is leading the way in addressing this with our range of recombinant monoclonal antibodies and knockout edited cell lines for gold-standard validation. Please check that this product meets your needs before purchasing.</p> <p>If you have any questions, special requirements or concerns, please send us an inquiry and/or contact our Support team ahead of purchase. Recommended alternatives for this product can be found below, along with publications, customer reviews and Q&As</p>

Properties

Form	Liquid
Storage instructions	Shipped at 4°C. Upon delivery aliquot and store at -20°C. Avoid freeze / thaw cycles.
Storage buffer	Preservative: 0.02% Sodium azide Constituents: PBS, 0.1% BSA
Clonality	Monoclonal
Clone number	31
Isotype	IgG1

Applications

The Abpromise guarantee

Our **Abpromise guarantee** covers the use of ab17157 in the following tested applications.

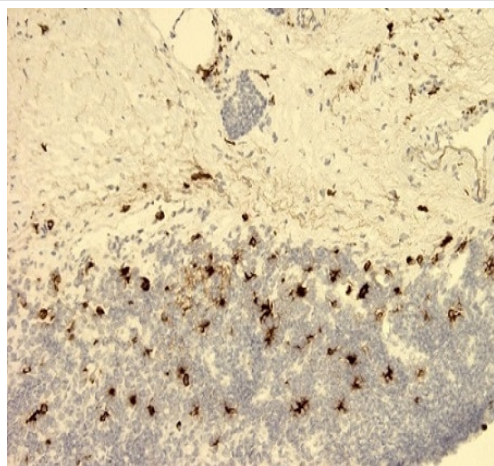
The application notes include recommended starting dilutions; optimal dilutions/concentrations should be determined by the end user.

Application	Abreviews	Notes
IHC-Fr		1/50.

Target

Function	Acid-stable proteinase inhibitor with strong affinities for trypsin, chymotrypsin, elastase, and cathepsin G. May prevent elastase-mediated damage to oral and possibly other mucosal tissues.
Tissue specificity	Mucous fluids.
Sequence similarities	Contains 2 WAP domains.
Cellular localization	Secreted.

Images



Immunohistochemical analysis on human tonsil frozen sections with ab17157 at a 1:50 dilution.

Immunohistochemistry (Frozen sections) - Anti-SLPI antibody [31] (ab17157)

Please note: All products are "FOR RESEARCH USE ONLY. NOT FOR USE IN DIAGNOSTIC PROCEDURES"

Our Abpromise to you: Quality guaranteed and expert technical support

- Replacement or refund for products not performing as stated on the datasheet
- Valid for 12 months from date of delivery
- Response to your inquiry within 24 hours
- We provide support in Chinese, English, French, German, Japanese and Spanish
- Extensive multi-media technical resources to help you
- We investigate all quality concerns to ensure our products perform to the highest standards

If the product does not perform as described on this datasheet, we will offer a refund or replacement. For full details of the Abpromise, please visit <https://www.abcam.com/abpromise> or contact our technical team.

Terms and conditions

- Guarantee only valid for products bought direct from Abcam or one of our authorized distributors