

## Product datasheet

# Anti-SLPI antibody - Aminoterminal end ab46763

[2 References](#) [2 Images](#)

### Overview

<b>Product name</b>	Anti-SLPI antibody - Aminoterminal end
<b>Description</b>	Rabbit polyclonal to SLPI - Aminoterminal end
<b>Host species</b>	Rabbit
<b>Tested applications</b>	<b>Suitable for:</b> WB
<b>Species reactivity</b>	<b>Reacts with:</b> Human
<b>Immunogen</b>	Synthetic peptide based on the aminoterminal end of human SLPI.(Please note: the amino acid sequence is proprietary) (Peptide available as <a href="#">ab46833</a> .)
<b>Positive control</b>	WB: Recombinant Human SLP I, Wild-type HeLa cell lysate, PC-3 cell lysate, LNCaP cell lysate
<b>General notes</b>	<p>The Life Science industry has been in the grips of a reproducibility crisis for a number of years. Abcam is leading the way in addressing this with our range of recombinant monoclonal antibodies and knockout edited cell lines for gold-standard validation. Please check that this product meets your needs before purchasing.</p> <p>If you have any questions, special requirements or concerns, please send us an inquiry and/or contact our Support team ahead of purchase. Recommended alternatives for this product can be found below, along with publications, customer reviews and Q&amp;As</p>

### Properties

<b>Form</b>	Liquid
<b>Storage instructions</b>	Shipped at 4°C. Upon delivery aliquot and store at -20°C. Avoid freeze / thaw cycles.
<b>Storage buffer</b>	<p>pH: 7.40</p> <p>Preservative: 0.05% Sodium azide</p> <p>Constituents: PBS, 50% Glycerol, 2.9% Sodium chloride</p>
<b>Purity</b>	Immunogen affinity purified
<b>Clonality</b>	Polyclonal
<b>Isotype</b>	IgG

### Applications

**The Abpromise guarantee** Our [Abpromise guarantee](#) covers the use of ab46763 in the following tested applications.

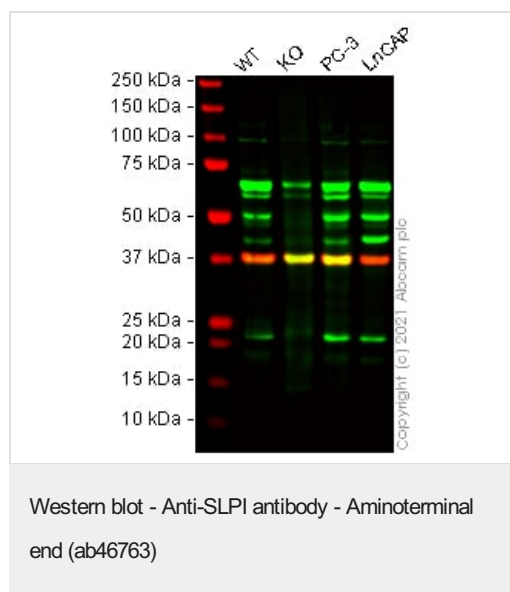
The application notes include recommended starting dilutions; optimal dilutions/concentrations should be determined by the end user.

Application	Abreviews	Notes
WB		1/1000 - 1/5000. Predicted molecular weight: 14 kDa. A recommended starting concentration for Western blots is 1/1000 when using colorimetric substrates such as BCIP/NBT, and 1/5000 for chemiluminescent substrates. Dilution optimised using Chromogenic detection.

## Target

Function	Acid-stable proteinase inhibitor with strong affinities for trypsin, chymotrypsin, elastase, and cathepsin G. May prevent elastase-mediated damage to oral and possibly other mucosal tissues.
Tissue specificity	Mucous fluids.
Sequence similarities	Contains 2 WAP domains.
Cellular localization	Secreted.

## Images



**All lanes :** Anti-SLPI antibody - Aminoterminal end (ab46763) at 1/1000 dilution

**Lane 1 :** Wild-type HeLa cell lysate

**Lane 2 :** SLPI knockout HeLa cell lysate

**Lane 3 :** PC-3 cell lysate

**Lane 4 :** LNCaP cell lysate

Lysates/proteins at 20 µg per lane.

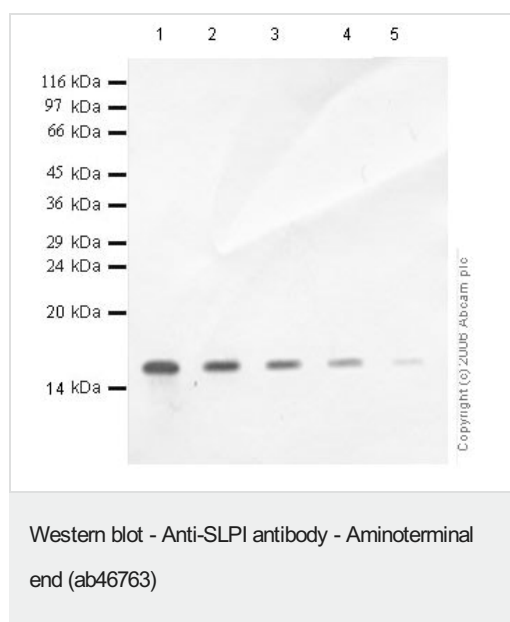
Performed under reducing conditions.

**Predicted band size:** 14 kDa

**Observed band size:** 22 kDa

False colour image of Western blot: Anti-SLPI antibody - Aminoterminal end staining at 1/1000 dilution, shown in green; Mouse anti-GAPDH antibody [6C5] ([ab8245](#)) loading control staining at 1/20000 dilution, shown in red. In Western blot, ab46763 was shown to bind specifically to SLPI. A band was observed at 22 kDa in wild-type HeLa cell lysates with no signal observed at this size in SLPI knockout cell line [ab265215](#) (knockout cell lysate)

**ab257685**). To generate this image, wild-type and SLPI knockout HeLa cell lysates were analysed. First, samples were run on an SDS-PAGE gel then transferred onto a nitrocellulose membrane. Membranes were blocked in fluorescent western blot (TBS-based) blocking solution before incubation with primary antibodies overnight at 4 °C. Blots were washed four times in TBS-T, incubated with secondary antibodies for 1 h at room temperature, washed again four times then imaged. Secondary antibodies used were Goat anti-Rabbit IgG H&L (IRDye®800CW) preabsorbed (**ab216773**) and Goat anti-Mouse IgG H&L (IRDye®680RD) preabsorbed (**ab216776**) at 1/20000 dilution.



**All lanes :** Anti-SLPI antibody - Aminoterminal end (ab46763) at 1/1000 dilution

**Lane 1 :** Recombinant Human SLP I at 0.04 µg

**Lane 2 :** Recombinant Human SLP I at 0.02 µg

**Lane 3 :** Recombinant Human SLP I at 0.01 µg

**Lane 4 :** Recombinant Human SLP I at 0.004 µg

**Lane 5 :** Recombinant Human SLP I at 0.001 µg

**Predicted band size:** 14 kDa

**Observed band size:** 15 kDa

**Please note:** All products are "FOR RESEARCH USE ONLY. NOT FOR USE IN DIAGNOSTIC PROCEDURES"

## Our Abpromise to you: Quality guaranteed and expert technical support

- Replacement or refund for products not performing as stated on the datasheet
- Valid for 12 months from date of delivery
- Response to your inquiry within 24 hours
- We provide support in Chinese, English, French, German, Japanese and Spanish
- Extensive multi-media technical resources to help you
- We investigate all quality concerns to ensure our products perform to the highest standards

If the product does not perform as described on this datasheet, we will offer a refund or replacement. For full details of the Abpromise, please visit <https://www.abcam.com/abpromise> or contact our technical team.

## Terms and conditions

- Guarantee only valid for products bought direct from Abcam or one of our authorized distributors