


Anti-SLUG antibody ab106077

★★★★☆ [4 Abreviews](#) [23 References](#) [2 Images](#)

Overview

Product name	Anti-SLUG antibody
Description	Rabbit polyclonal to SLUG
Host species	Rabbit
Tested applications	Suitable for: WB
Species reactivity	Reacts with: Human Predicted to work with: Mouse, Chimpanzee, Macaque monkey, Gorilla, Orangutan 
Immunogen	Synthetic peptide corresponding to Human SLUG aa 1-100 conjugated to keyhole limpet haemocyanin. (Peptide available as ab133782)
General notes	<p>This antibody has only been tested on overexpressing cell lysates; we have no data on the detection of the endogenous protein.</p> <p>The Life Science industry has been in the grips of a reproducibility crisis for a number of years. Abcam is leading the way in addressing this with our range of recombinant monoclonal antibodies and knockout edited cell lines for gold-standard validation. Please check that this product meets your needs before purchasing.</p> <p>If you have any questions, special requirements or concerns, please send us an inquiry and/or contact our Support team ahead of purchase. Recommended alternatives for this product can be found below, along with publications, customer reviews and Q&As</p>

Properties

Form	Liquid
Storage instructions	Shipped at 4°C. Store at +4°C short term (1-2 weeks). Upon delivery aliquot. Store at -20°C or -80°C. Avoid freeze / thaw cycle.
Storage buffer	pH: 7.40 Preservative: 0.02% Sodium azide Constituent: PBS Batches of this product that have a concentration < 1mg/ml may have BSA added as a stabilising agent. If you would like information about the formulation of a specific lot, please contact our scientific support team who will be happy to help.
Purity	Immunogen affinity purified

Clonality	Polyclonal
Isotype	IgG

Applications

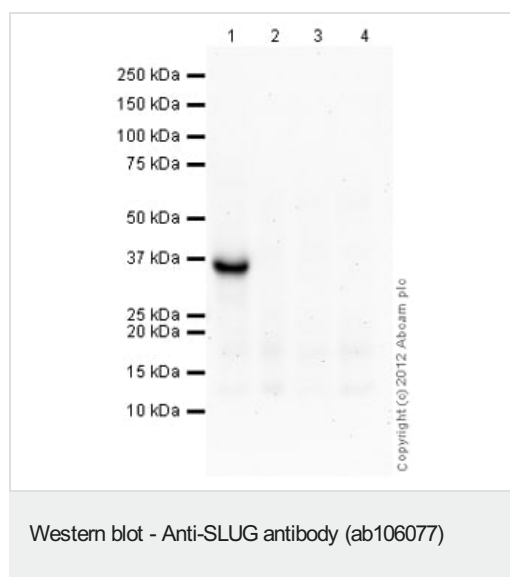
The Abpromise guarantee Our **Abpromise guarantee** covers the use of ab106077 in the following tested applications. The application notes include recommended starting dilutions; optimal dilutions/concentrations should be determined by the end user.

Application	Abreviews	Notes
WB	★★★★★ (2)	Use a concentration of 1 µg/ml. Detects a band of approximately 36 kDa (predicted molecular weight: 30 kDa).

Target

Function	Transcriptional repressor. Involved in the generation and migration of neural crest cells.
Tissue specificity	Expressed in placenta and adult heart, pancreas, liver, kidney and skeletal muscle.
Involvement in disease	Defects in SNAI2 are the cause of Waardenburg syndrome type 2D (WS2D) [MIM:608890]. WS2 is a genetically heterogeneous, autosomal dominant disorder characterized by sensorineural deafness, pigmentary disturbances, and absence of dystopia canthorum. The frequency of deafness is higher in WS2 than in WS1.
Sequence similarities	Belongs to the snail C2H2-type zinc-finger protein family. Contains 5 C2H2-type zinc fingers.
Cellular localization	Nucleus.

Images



All lanes : Anti-SLUG antibody (ab106077) at 1 µg/ml

Lane 1 : MCF7 cell lysate overexpressing SLUG protein

Lane 2 : MCF7 cell lysate overexpressing SNAIL protein

Lane 3 : MCF7 cell lysate transfected with vector control plasmid

Lane 4 : Untransfected MCF7 cell lysate

Lysates/proteins at 10 µg per lane.

Secondary

All lanes : Goat Anti-Rabbit IgG H&L (HRP) preadsorbed (**ab97080**) at 1/5000 dilution

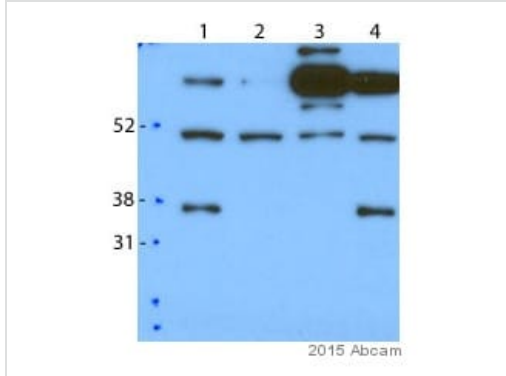
Developed using the ECL technique.

Performed under reducing conditions.

Predicted band size: 30 kDa

Observed band size: 36 kDa

Exposure time: 8 minutes



Western blot - Anti-SLUG antibody (ab106077)

This image is courtesy of an anonymous Abreview

All lanes : Anti-SLUG antibody (ab106077) at 1/2000 dilution

Lane 1 : MDA-MB-231 whole cell lysate

Lane 2 : MDA-MB-231 whole cell lysate - sh Slug 1

Lane 3 : MDA-MB-231 whole cell lysate - sh Slug 2

Lane 4 : MDA-MB-231 whole cell lysate - sh Snail 1

Lysates/proteins at 30 µg per lane.

Secondary

All lanes : HRP-conjugated goat anti-rabbit IgG polyclonal at 1/5000 dilution

Developed using the ECL technique.

Performed under reducing conditions.

Predicted band size: 30 kDa

Observed band size: 35,65 kDa

Additional bands at: 50 kDa (possible non-specific binding)

Exposure time: 30 seconds

Blocked with 5% milk for 1 hour at 22°C.

Primary incubation at 4°C for 18 hours.

Please note: All products are "FOR RESEARCH USE ONLY. NOT FOR USE IN DIAGNOSTIC PROCEDURES"

Our Abpromise to you: Quality guaranteed and expert technical support

- Replacement or refund for products not performing as stated on the datasheet
- Valid for 12 months from date of delivery
- Response to your inquiry within 24 hours
- We provide support in Chinese, English, French, German, Japanese and Spanish

- Extensive multi-media technical resources to help you
- We investigate all quality concerns to ensure our products perform to the highest standards

If the product does not perform as described on this datasheet, we will offer a refund or replacement. For full details of the Abpromise, please visit <https://www.abcam.com/abpromise> or contact our technical team.

Terms and conditions

- Guarantee only valid for products bought direct from Abcam or one of our authorized distributors