

### Anti-SMAD 1/5/8/9 antibody ab13723

[6 References](#) [1 Image](#)

#### Overview

<b>Product name</b>	Anti-SMAD 1/5/8/9 antibody
<b>Description</b>	Rabbit polyclonal to SMAD 1/5/8/9
<b>Host species</b>	Rabbit
<b>Specificity</b>	ab13723 may cross-react with SMAD2 or SMAD3. The actual SMADs detected with this antibody may vary according to cell or tissue-type specific expression
<b>Tested applications</b>	<b>Suitable for:</b> WB
<b>Species reactivity</b>	<b>Reacts with:</b> Human
<b>Immunogen</b>	Synthetic peptide, corresponding to amino acids 18-32 and amino acids 315-329 of Human SMAD1. These sequences are identical in human SMAD5 and SMAD8/9.
<b>Positive control</b>	A549 whole cell lysate.
<b>General notes</b>	<p>The Life Science industry has been in the grips of a reproducibility crisis for a number of years. Abcam is leading the way in addressing this with our range of recombinant monoclonal antibodies and knockout edited cell lines for gold-standard validation. Please check that this product meets your needs before purchasing.</p> <p>If you have any questions, special requirements or concerns, please send us an inquiry and/or contact our Support team ahead of purchase. Recommended alternatives for this product can be found below, along with publications, customer reviews and Q&amp;As</p>

#### Properties

<b>Form</b>	Liquid
<b>Storage instructions</b>	Shipped at 4°C. Store at +4°C short term (1-2 weeks). Upon delivery aliquot. Store at -20°C or -80°C. Avoid freeze / thaw cycle.
<b>Storage buffer</b>	<p>pH: 7.4</p> <p>Preservative: 0.05% Sodium azide</p> <p>Constituents: PBS, 0.05% BSA</p>
<b>Purity</b>	Protein G purified
<b>Clonality</b>	Polyclonal
<b>Isotype</b>	IgG

## Applications

### The Abpromise guarantee

Our **Abpromise guarantee** covers the use of ab13723 in the following tested applications.

The application notes include recommended starting dilutions; optimal dilutions/concentrations should be determined by the end user.

Application	Abreviews	Notes
WB		Use a concentration of 0.5 - 2 µg/ml. Detects a band of approximately 51 kDa.

## Target

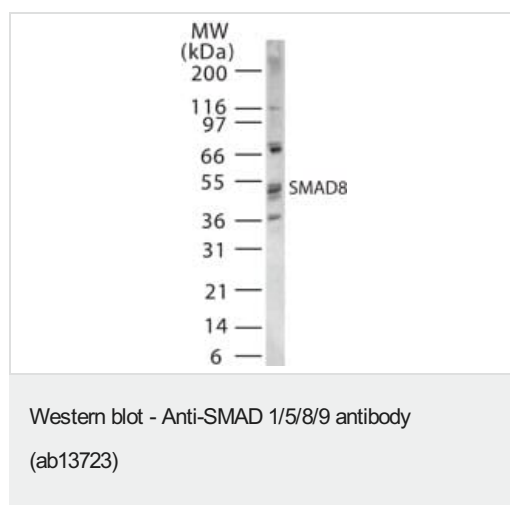
### Relevance

SMADs are members of the MAD-related family of molecules. MAD-related proteins are a family of intracellular proteins that are essential components in the signaling pathways of the serine/threonine kinase receptors of the transforming growth factor beta superfamily. SMADs can be divided into receptor-regulated SMADs, common-mediator SMAD and inhibitory SMADs. SMAD1, SMAD5, SMAD8 and SMAD9 have high degrees of homology. SMAD8 and SMAD9 are used as alternate names for the same protein. Human SMAD1 is a 465 amino acid protein, human SMAD5 is a 465 amino acid and human SMAD9 is a 430 amino acid protein.

### Cellular localization

Cytoplasmic

## Images



Western blot analysis of SMAD1/5/8/9 in 15 ugs of A549 cell lysate using ab13723 at 0.5 ug/ml.

Western blot analysis of SMAD1/5/8/9 in 15 ugs of A549 cell lysate using ab13723 at 0.5 ug/ml.

**Please note:** All products are "FOR RESEARCH USE ONLY. NOT FOR USE IN DIAGNOSTIC PROCEDURES"

## Our Abpromise to you: Quality guaranteed and expert technical support

- Replacement or refund for products not performing as stated on the datasheet
- Valid for 12 months from date of delivery
- Response to your inquiry within 24 hours
- We provide support in Chinese, English, French, German, Japanese and Spanish
- Extensive multi-media technical resources to help you

- We investigate all quality concerns to ensure our products perform to the highest standards

If the product does not perform as described on this datasheet, we will offer a refund or replacement. For full details of the Abpromise, please visit <https://www.abcam.com/abpromise> or contact our technical team.

#### **Terms and conditions**

---

- Guarantee only valid for products bought direct from Abcam or one of our authorized distributors