

Product datasheet

Anti-SMCHD1 antibody ab122555

★★★★★ [2 Abreviews](#) [5 References](#) [3 Images](#)

Overview

| | |
|----------------------------|---|
| Product name | Anti-SMCHD1 antibody |
| Description | Rabbit polyclonal to SMCHD1 |
| Host species | Rabbit |
| Tested applications | Suitable for: IHC-P, WB, ICC/IF |
| Species reactivity | Reacts with: Human |
| Immunogen | antigen sequence: DNGRGMTSKQ LNNWAVYRLS KFTRQGDFES DHSGYVRPVP VPRSLNSDIS YFGVGGKQAV FFVGQSARM I SKPADSQDVH ELVLSKED, corresponding to N terminal amino acids 184-271 of Human SMCHD1. Run BLAST with Expasy Run BLAST with NCBI |
| Positive control | WB: U 2 OS and MCF7 cell lysates; IHC-P: Human duodenum tissue; ICC/IF: Human cell like U-2 OS. |
| General notes | <p>The Life Science industry has been in the grips of a reproducibility crisis for a number of years. Abcam is leading the way in addressing this with our range of recombinant monoclonal antibodies and knockout edited cell lines for gold-standard validation. Please check that this product meets your needs before purchasing.</p> <p>If you have any questions, special requirements or concerns, please send us an inquiry and/or contact our Support team ahead of purchase. Recommended alternatives for this product can be found below, along with publications, customer reviews and Q&As</p> |

Properties

| | |
|-----------------------------|---|
| Form | Liquid |
| Storage instructions | Shipped at 4°C. Upon delivery aliquot and store at -20°C. Avoid freeze / thaw cycles. |
| Storage buffer | pH: 7.20 Preservative: 0.02% Sodium azide Constituents: 59% PBS, 40% Glycerol (glycerin, glycerine) |
| Purity | Immunogen affinity purified |
| Clonality | Polyclonal |
| Isotype | IgG |

Applications

The Abpromise guarantee

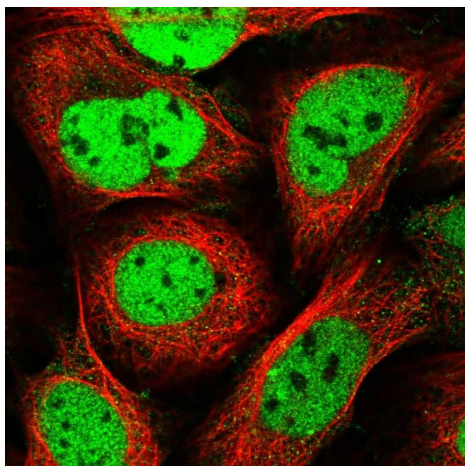
Our **Abpromise guarantee** covers the use of ab122555 in the following tested applications.

The application notes include recommended starting dilutions; optimal dilutions/concentrations should be determined by the end user.

| Application | Abreviews | Notes |
|-------------|-----------|--|
| IHC-P | | 1/50 - 1/200. Perform heat mediated antigen retrieval with citrate buffer pH 6 before commencing with IHC staining protocol. |
| WB | ★★★★★ (1) | Use a concentration of 0.04 - 0.4 µg/ml. |
| ICC/IF | ★★★★★ (1) | Use a concentration of 0.25 - 2 µg/ml. |

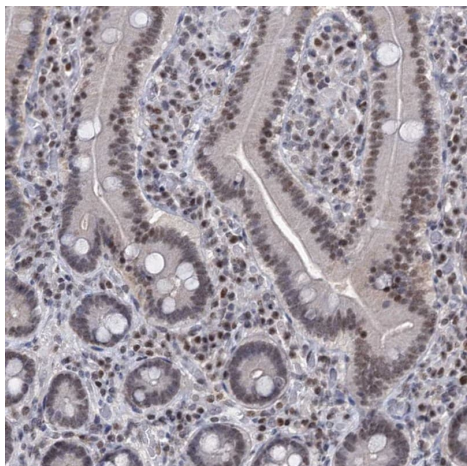
Target

Images



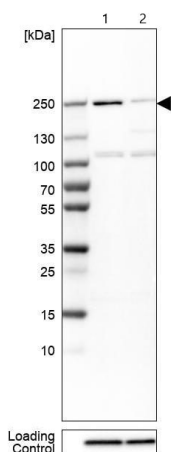
Immunofluorescent staining of Human cell line U-2 OS shows localization to nucleoplasm. Recommended concentration of ab122555 1-4 µg/ml. Cells treated with PFA/Triton X-100.

Immunocytochemistry/ Immunofluorescence - Anti-SMCHD1 antibody (ab122555)



Immunohistochemistry (Formalin/PFA-fixed paraffin-embedded sections) - Anti-SMCHD1 antibody (ab122555)

ab122555, at 1/50 dilution, staining SMCHD1 in Paraffin Embedded human duodenum shows nuclear positivity in glandular cells by Immunohistochemistry.



Western blot - Anti-SMCHD1 antibody (ab122555)

All lanes : Anti-SMCHD1 antibody (ab122555) at 0.4 µg/ml

Lane 1 : U-2 OS (human bone osteosarcoma epithelial cell line) whole cell lysate

Lane 2 : MCF7 (human breast adenocarcinoma cell line) whole cell lysate

Loading Control: Anti-HDAC1

Please note: All products are "FOR RESEARCH USE ONLY. NOT FOR USE IN DIAGNOSTIC PROCEDURES"

Our Abpromise to you: Quality guaranteed and expert technical support

- Replacement or refund for products not performing as stated on the datasheet
- Valid for 12 months from date of delivery
- Response to your inquiry within 24 hours
- We provide support in Chinese, English, French, German, Japanese and Spanish
- Extensive multi-media technical resources to help you
- We investigate all quality concerns to ensure our products perform to the highest standards

If the product does not perform as described on this datasheet, we will offer a refund or replacement. For full details of the Abpromise, please visit <https://www.abcam.com/abpromise> or contact our technical team.

Terms and conditions

- Guarantee only valid for products bought direct from Abcam or one of our authorized distributors