

## Product datasheet

# Anti-SMCHD1 antibody [EPR12340-29] ab179456

Recombinant RabMAb

[1 References](#) [4 Images](#)

### Overview

<b>Product name</b>	Anti-SMCHD1 antibody [EPR12340-29]
<b>Description</b>	Rabbit monoclonal [EPR12340-29] to SMCHD1
<b>Host species</b>	Rabbit
<b>Tested applications</b>	<b>Suitable for:</b> IHC-P, WB <b>Unsuitable for:</b> Flow Cyt, ICC/IF or IP
<b>Species reactivity</b>	<b>Reacts with:</b> Human <b>Does not react with:</b> Mouse, Rat
<b>Immunogen</b>	Recombinant fragment within Human SMCHD1 aa 1800-2000. The exact sequence is proprietary. Database link: <a href="#">A6NHR9</a>
<b>General notes</b>	This product is a recombinant monoclonal antibody, which offers several advantages including: <ul style="list-style-type: none"><li>- High batch-to-batch consistency and reproducibility</li><li>- Improved sensitivity and specificity</li><li>- Long-term security of supply</li><li>- Animal-free production</li></ul> For more information <a href="#">see here</a> . Our RabMAb <sup>®</sup> technology is a patented hybridoma-based technology for making rabbit monoclonal antibodies. For details on our patents, please refer to <a href="#">RabMAb<sup>®</sup> patents</a> .

### Properties

<b>Form</b>	Liquid
<b>Storage instructions</b>	Shipped at 4°C. Store at +4°C short term (1-2 weeks). Upon delivery aliquot. Store at -20°C long term. Avoid freeze / thaw cycle.
<b>Storage buffer</b>	pH: 7.20 Preservative: 0.01% Sodium azide Constituents: 9% PBS, 40% Glycerol (glycerin, glycerine), 0.05% BSA, 50% Tissue culture supernatant
<b>Purity</b>	Tissue culture supernatant
<b>Clonality</b>	Monoclonal

Clone number                      EPR12340-29

Isotype                                IgG

## Applications

**The Abpromise guarantee**        Our **Abpromise guarantee** covers the use of ab179456 in the following tested applications.

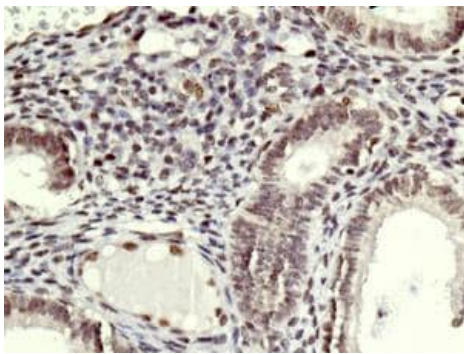
The application notes include recommended starting dilutions; optimal dilutions/concentrations should be determined by the end user.

Application	Abreviews	Notes
IHC-P		1/50 - 1/100. Perform heat mediated antigen retrieval with citrate buffer pH 6 before commencing with IHC staining protocol. The use of an HRP/AP polymerized secondary antibody is recommended.
WB		1/1000 - 1/10000. Predicted molecular weight: 226 kDa.

**Application notes**                      Is unsuitable for Flow Cyt, ICC/IF or IP.

## Target

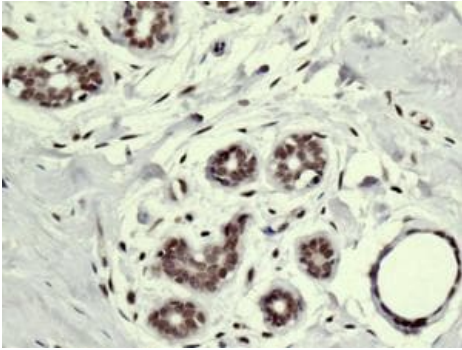
## Images



Immunohistochemical analysis of paraffin-embedded Human uterus tissue, labeling SMCHD1 using ab179456 at a 1/50 dilution.

Perform heat mediated antigen retrieval with citrate buffer pH 6 before commencing with IHC staining protocol.

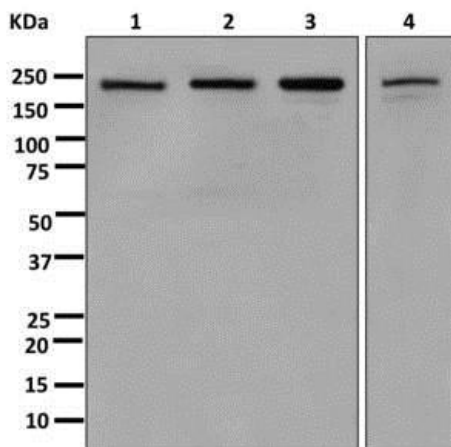
Immunohistochemistry (Formalin/PFA-fixed paraffin-embedded sections) - Anti-SMCHD1 antibody [EPR12340-29] (ab179456)



Immunohistochemistry (Formalin/PFA-fixed paraffin-embedded sections) - Anti-SMCHD1 antibody [EPR12340-29] (ab179456)

Immunohistochemical analysis of paraffin-embedded Human breast tissue, labeling SMCHD1 using ab179456 at a 1/50 dilution.

Perform heat mediated antigen retrieval with citrate buffer pH 6 before commencing with IHC staining protocol.



Western blot - Anti-SMCHD1 antibody [EPR12340-29] (ab179456)

**All lanes** : Anti-SMCHD1 antibody [EPR12340-29] (ab179456) at 1/1000 dilution

**Lane 1** : 293T cell lysate

**Lane 2** : HepG2 cell lysate

**Lane 3** : HeLa cell lysate

**Lane 4** : U-87 MG cell lysate

Lysates/proteins at 10 µg per lane.

#### Secondary

**All lanes** : Standard HRP labeled goat anti-rabbit at 1/2000 dilution

Developed using the ECL technique.

**Predicted band size:** 226 kDa

### Why choose a recombinant antibody?



**Research with confidence**  
Consistent and reproducible results



**Long-term and scalable supply**  
Recombinant technology



**Success from the first experiment**  
Confirmed specificity



**Ethical standards compliant**  
Animal-free production

Anti-SMCHD1 antibody [EPR12340-29] (ab179456)

**Please note:** All products are "FOR RESEARCH USE ONLY. NOT FOR USE IN DIAGNOSTIC PROCEDURES"

### Our Abpromise to you: Quality guaranteed and expert technical support

---

- Replacement or refund for products not performing as stated on the datasheet
- Valid for 12 months from date of delivery
- Response to your inquiry within 24 hours
- We provide support in Chinese, English, French, German, Japanese and Spanish
- Extensive multi-media technical resources to help you
- We investigate all quality concerns to ensure our products perform to the highest standards

If the product does not perform as described on this datasheet, we will offer a refund or replacement. For full details of the Abpromise, please visit <https://www.abcam.com/abpromise> or contact our technical team.

### Terms and conditions

---

- Guarantee only valid for products bought direct from Abcam or one of our authorized distributors