

Product datasheet

Anti-SMCHD1 antibody [EPR12340] ab175235

Recombinant RabMAb

[5 Images](#)

Overview

Product name	Anti-SMCHD1 antibody [EPR12340]
Description	Rabbit monoclonal [EPR12340] to SMCHD1
Host species	Rabbit
Tested applications	Suitable for: IHC-P, WB, IP Unsuitable for: Flow Cyt or ICC/IF
Species reactivity	Reacts with: Human
Immunogen	Recombinant fragment within Human SMCHD1 aa 1800-2000. The exact sequence is proprietary. Database link: A6NHR9
Positive control	WB: 293T, HepG2, HeLa, and U-87 MG cell lysates. IHC-P: Human lung carcinoma and Human testis tissue. IP: HeLa whole cell lysate.
General notes	<p>This product is a recombinant monoclonal antibody, which offers several advantages including:</p> <ul style="list-style-type: none">- High batch-to-batch consistency and reproducibility- Improved sensitivity and specificity- Long-term security of supply- Animal-free production <p>For more information see here.</p> <p>Our RabMAb[®] technology is a patented hybridoma-based technology for making rabbit monoclonal antibodies. For details on our patents, please refer to RabMAb[®] patents.</p> <p>Mouse, Rat: We have preliminary internal testing data to indicate this antibody may not react with these species. Please contact us for more information.</p>

Properties

Form	Liquid
Storage instructions	Shipped at 4°C. Store at +4°C short term (1-2 weeks). Upon delivery aliquot. Store at -20°C long term. Avoid freeze / thaw cycle.
Storage buffer	pH: 7.20 Preservative: 0.01% Sodium azide Constituents: 9% PBS, 40% Glycerol (glycerin, glycerine), 0.05% BSA, 50% Tissue culture

	supernatant
Purity	Protein A purified
Clonality	Monoclonal
Clone number	EPR12340
Isotype	IgG

Applications

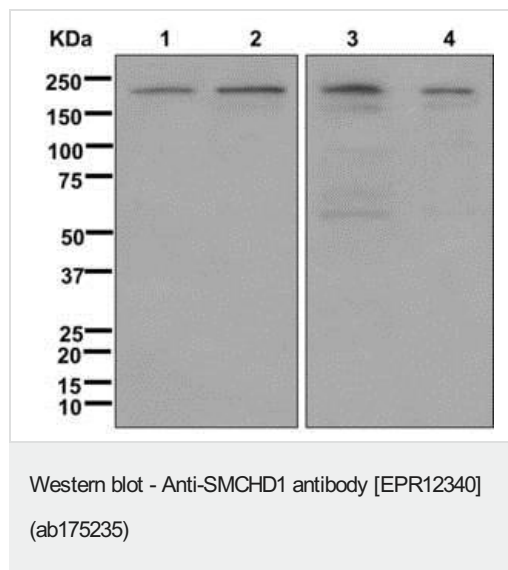
The Abpromise guarantee Our **Abpromise guarantee** covers the use of ab175235 in the following tested applications. The application notes include recommended starting dilutions; optimal dilutions/concentrations should be determined by the end user.

Application	Abreviews	Notes
IHC-P		1/50. Perform heat mediated antigen retrieval with citrate buffer pH 6 before commencing with IHC staining protocol.
WB		1/1000. Predicted molecular weight: 226 kDa.
IP		1/30.

Application notes Is unsuitable for Flow Cyt or ICC/IF.

Target

Images



All lanes : Anti-SMCHD1 antibody [EPR12340] (ab175235) at 1/1000 dilution

Lane 1 : 293T (Human embryonic kidney epithelial cell) cell lysate

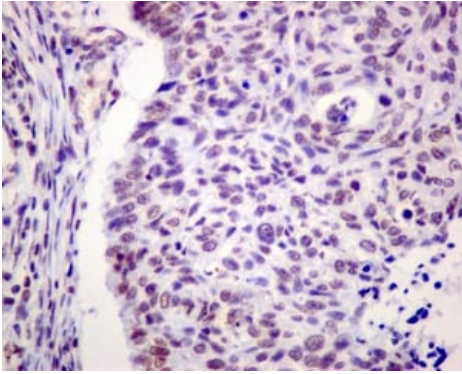
Lane 2 : HepG2 cell lysate

Lane 3 : HeLa cell lysate

Lane 4 : U-87 MG (Human glioblastoma-astrocytoma epithelial cell line) cell lysate

Lysates/proteins at 10 µg per lane.

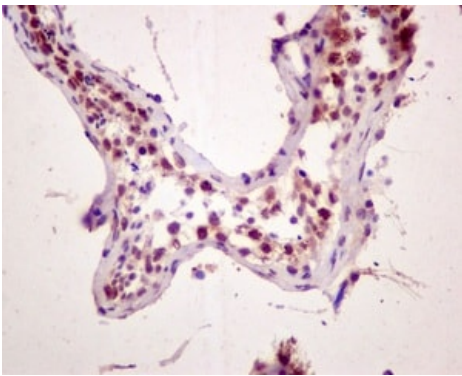
Predicted band size: 226 kDa



Immunohistochemistry (Formalin/PFA-fixed paraffin-embedded sections) - Anti-SMCHD1 antibody [EPR12340] (ab175235)

Immunohistochemical analysis of paraffin embedded Human lung carcinoma tissue labeling SMCHD1 with ab175235 at 1/50.

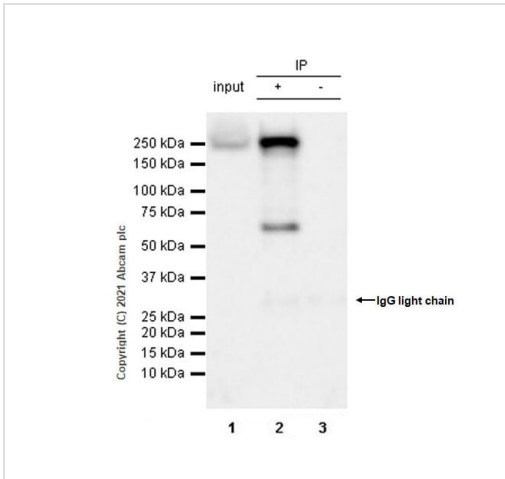
Perform heat mediated antigen retrieval with citrate buffer pH 6 before commencing with IHC staining protocol.



Immunohistochemistry (Formalin/PFA-fixed paraffin-embedded sections) - Anti-SMCHD1 antibody [EPR12340] (ab175235)

Immunohistochemical analysis of paraffin embedded Human testis tissue labeling SMCHD1 with ab175235 at 1/50.

Perform heat mediated antigen retrieval with citrate buffer pH 6 before commencing with IHC staining protocol.



Immunoprecipitation - Anti-SMCHD1 antibody [EPR12340] (ab175235)

Blocking buffer and concentration: 5% NFD/MBST.

The 60 kDa band in the IP lane may be caused by cleavage (PMID: 30071896).

All lanes : Anti-SMCHD1 antibody [EPR12340] (ab175235) at 1/1000 dilution

Lane 1 : HeLa (human cervix adenocarcinoma epithelial cell) whole cell lysate at 10 µg

Lane 2 : HeLa whole cell lysate

Lane 3 : Rabbit monoclonal IgG (**ab172730**) instead of ab175235 in HeLa whole cell lysate

Secondary

All lanes : VeriBlot for IP Detection Reagent (HRP) (**ab131366**) at 1/5000 dilution

Developed using the ECL technique.

Observed band size: 226,60 kDa

Exposure time: 10 seconds

Why choose a recombinant antibody?

- Research with confidence**
Consistent and reproducible results
- Long-term and scalable supply**
Recombinant technology
- Success from the first experiment**
Confirmed specificity
- Ethical standards compliant**
Animal-free production

Anti-SMCHD1 antibody [EPR12340] (ab175235)

Please note: All products are "FOR RESEARCH USE ONLY. NOT FOR USE IN DIAGNOSTIC PROCEDURES"

Our Abpromise to you: Quality guaranteed and expert technical support

- Replacement or refund for products not performing as stated on the datasheet
- Valid for 12 months from date of delivery
- Response to your inquiry within 24 hours

- We provide support in Chinese, English, French, German, Japanese and Spanish
- Extensive multi-media technical resources to help you
- We investigate all quality concerns to ensure our products perform to the highest standards

If the product does not perform as described on this datasheet, we will offer a refund or replacement. For full details of the Abpromise, please visit <https://www.abcam.com/abpromise> or contact our technical team.

Terms and conditions

- Guarantee only valid for products bought direct from Abcam or one of our authorized distributors