


Anti-SMOC2 antibody - C-terminal ab198715

1 Image

Overview

Product name	Anti-SMOC2 antibody - C-terminal
Description	Rabbit polyclonal to SMOC2 - C-terminal
Host species	Rabbit
Tested applications	Suitable for: IHC-P
Species reactivity	Reacts with: Human Predicted to work with: Mouse 
Immunogen	Synthetic peptide corresponding to Human SMOC2 (C terminal). Database link: Q9H3U7
Positive control	Human liver cancer tissue.
General notes	<p>The Life Science industry has been in the grips of a reproducibility crisis for a number of years. Abcam is leading the way in addressing this with our range of recombinant monoclonal antibodies and knockout edited cell lines for gold-standard validation. Please check that this product meets your needs before purchasing.</p> <p>If you have any questions, special requirements or concerns, please send us an inquiry and/or contact our Support team ahead of purchase. Recommended alternatives for this product can be found below, along with publications, customer reviews and Q&As</p>

Properties

Form	Liquid
Storage instructions	Shipped at 4°C. Store at +4°C short term (1-2 weeks). Upon delivery aliquot. Store at -20°C long term. Avoid freeze / thaw cycle.
Storage buffer	pH: 7.4 Preservative: 0.05% Sodium azide Constituents: 49% PBS, 50% Glycerol (glycerin, glycerine)
Purity	Immunogen affinity purified
Clonality	Polyclonal
Isotype	IgG

Applications

The Abpromise guarantee

Our **Abpromise guarantee** covers the use of ab198715 in the following tested applications.

The application notes include recommended starting dilutions; optimal dilutions/concentrations should be determined by the end user.

Application	Abreviews	Notes
IHC-P		1/25 - 1/100.

Target

Function

Promotes matrix assembly and cell adhesiveness (By similarity). Can stimulate endothelial cell proliferation, migration, as well as angiogenesis.

Involvement in disease

Dentin dysplasia 1 (DTDP1) [MIM:125400]: A dental defect in which both primary and secondary dentitions are affected. The clinical crowns of both permanent and deciduous teeth are of normal shape, form and color in most cases, although they may be slightly opalescent and blue or brown. Teeth may be very mobile and exfoliate spontaneously because of inadequate root formation. On radiographs, the roots are short and may be more pointed than normal. Pulp chambers are usually absent except for a chevron-shaped remnant in the crown. Root canals are usually absent.

Note=The disease is caused by mutations affecting the gene represented in this entry.

Sequence similarities

Contains 2 EF-hand domains.

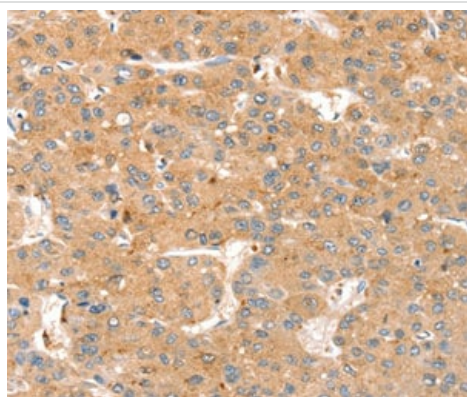
Contains 1 Kazal-like domain.

Contains 2 thyroglobulin type-1 domains.

Cellular localization

Secreted > extracellular space > extracellular matrix > basement membrane.

Images



Immunohistochemical analysis of paraffin-embedded human liver cancer tissue labeling SMOC2 with ab198715 at 1/35 dilution.

Immunohistochemistry (Formalin/PFA-fixed paraffin-embedded sections) - Anti-SMOC2 antibody - C-terminal (ab198715)

Please note: All products are "FOR RESEARCH USE ONLY. NOT FOR USE IN DIAGNOSTIC PROCEDURES"

Our Abpromise to you: Quality guaranteed and expert technical support

- Replacement or refund for products not performing as stated on the datasheet
- Valid for 12 months from date of delivery
- Response to your inquiry within 24 hours
- We provide support in Chinese, English, French, German, Japanese and Spanish
- Extensive multi-media technical resources to help you
- We investigate all quality concerns to ensure our products perform to the highest standards

If the product does not perform as described on this datasheet, we will offer a refund or replacement. For full details of the Abpromise, please visit <https://www.abcam.com/abpromise> or contact our technical team.

Terms and conditions

- Guarantee only valid for products bought direct from Abcam or one of our authorized distributors