


Product datasheet

Anti-Smoothelin antibody ab74379

1 Image

Overview

Product name	Anti-Smoothelin antibody
Description	Rabbit polyclonal to Smoothelin
Host species	Rabbit
Tested applications	Suitable for: WB
Species reactivity	Reacts with: Human Predicted to work with: Mouse, Rat, Horse, Cow, Dog, Pig, Orangutan 
Immunogen	Synthetic peptide corresponding to Human Smoothelin aa 1-100 conjugated to keyhole limpet haemocyanin. (Peptide available as ab74378)
Positive control	This antibody gave a positive signal in the following Human lysates: Liver Tissue, Jurkat Whole Cell, SK N SH Whole Cell, Brain Tissue
General notes	<p>The Life Science industry has been in the grips of a reproducibility crisis for a number of years. Abcam is leading the way in addressing this with our range of recombinant monoclonal antibodies and knockout edited cell lines for gold-standard validation. Please check that this product meets your needs before purchasing.</p> <p>If you have any questions, special requirements or concerns, please send us an inquiry and/or contact our Support team ahead of purchase. Recommended alternatives for this product can be found below, along with publications, customer reviews and Q&As</p>

Properties

Form	Liquid
Storage instructions	Shipped at 4°C. Store at +4°C short term (1-2 weeks). Upon delivery aliquot. Store at -20°C or -80°C. Avoid freeze / thaw cycle.
Storage buffer	pH: 7.40 Preservative: 0.02% Sodium azide Constituent: PBS

Batches of this product that have a concentration < 1mg/ml may have BSA added as a stabilising agent. If you would like information about the formulation of a specific lot, please contact our scientific support team who will be happy to help.

Purity	Immunogen affinity purified
Clonality	Polyclonal
Isotype	IgG

Applications

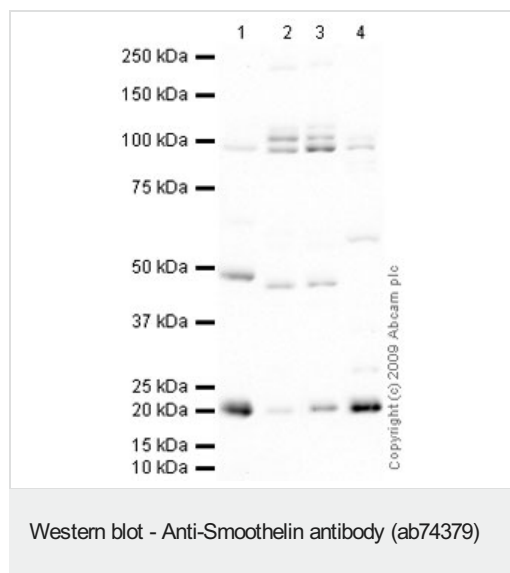
The Abpromise guarantee Our **Abpromise guarantee** covers the use of ab74379 in the following tested applications. The application notes include recommended starting dilutions; optimal dilutions/concentrations should be determined by the end user.

Application	Abreviews	Notes
WB		Use a concentration of 1 µg/ml. Detects a band of approximately 95, 100 kDa (predicted molecular weight: 100 kDa).

Target

Function	Structural protein of the cytoskeleton.
Tissue specificity	Smooth muscle; contractile or vascular (for the long form).
Sequence similarities	Belongs to the smoothelin family. Contains 1 CH (calponin-homology) domain.
Cellular localization	Cytoplasm > cytoskeleton. Exhibits a filamentous organization.

Images



All lanes : Anti-Smoothelin antibody (ab74379) at 1 µg/ml

Lane 1 : Human liver tissue lysate - total protein ([ab29889](#))

Lane 2 : Jurkat (Human T cell lymphoblast-like cell line) Whole Cell Lysate

Lane 3 : SK N SH (Human neuroblastoma) Whole Cell Lysate

Lane 4 : Human brain tissue lysate - total protein ([ab29466](#))

Lysates/proteins at 10 µg per lane.

Secondary

All lanes : Goat polyclonal to Rabbit IgG - H&L - Pre-Adsorbed (HRP) at 1/3000 dilution

Developed using the ECL technique.

Performed under reducing conditions.

Predicted band size: 100 kDa

Observed band size: 100,95 kDa

Additional bands at: 20 kDa, 45 kDa, 56 kDa. We are unsure as to the identity of these extra bands.

Exposure time: 8 minutes

This antibody was raised against an immunogen that is predicted to cross react with all isoforms of Smoothelin, with exception to Isoform A (Short).

Please note: All products are "FOR RESEARCH USE ONLY. NOT FOR USE IN DIAGNOSTIC PROCEDURES"

Our Abpromise to you: Quality guaranteed and expert technical support

- Replacement or refund for products not performing as stated on the datasheet
- Valid for 12 months from date of delivery
- Response to your inquiry within 24 hours
- We provide support in Chinese, English, French, German, Japanese and Spanish
- Extensive multi-media technical resources to help you
- We investigate all quality concerns to ensure our products perform to the highest standards

If the product does not perform as described on this datasheet, we will offer a refund or replacement. For full details of the Abpromise, please visit <https://www.abcam.com/abpromise> or contact our technical team.

Terms and conditions

- Guarantee only valid for products bought direct from Abcam or one of our authorized distributors