

Anti-Smoothened antibody ab209833

1 Image

Overview

Product name	Anti-Smoothened antibody
Description	Rabbit polyclonal to Smoothened
Host species	Rabbit
Tested applications	Suitable for: WB
Species reactivity	Reacts with: Zebrafish
Immunogen	Recombinant fragment within Zebrafish Smoothened aa 471-686. The exact sequence is proprietary. Database link: 30225
Positive control	WB: zebrafish brain, zebrafish heart, zebrafish liver and zebrafish muscle extracts.
General notes	<p>The Life Science industry has been in the grips of a reproducibility crisis for a number of years. Abcam is leading the way in addressing this with our range of recombinant monoclonal antibodies and knockout edited cell lines for gold-standard validation. Please check that this product meets your needs before purchasing.</p> <p>If you have any questions, special requirements or concerns, please send us an inquiry and/or contact our Support team ahead of purchase. Recommended alternatives for this product can be found below, along with publications, customer reviews and Q&As</p>

Properties

Form	Liquid
Storage instructions	Shipped at 4°C. Store at +4°C short term (1-2 weeks). Upon delivery aliquot. Store at -20°C. Avoid freeze / thaw cycle.
Storage buffer	pH: 7.00 Preservative: 0.01% Thimerosal (merthiolate) Constituents: 79.99% PBS, 20% Glycerol (glycerin, glycerine)
Purity	Immunogen affinity purified
Clonality	Polyclonal
Isotype	IgG

Applications

The Abpromise guarantee

Our **Abpromise guarantee** covers the use of ab209833 in the following tested applications.

The application notes include recommended starting dilutions; optimal dilutions/concentrations should be determined by the end user.

Application	Abreviews	Notes
WB		1/500 - 1/3000.

Target

Function

G protein-coupled receptor that probably associates with the patched protein (PTCH) to transduce the hedgehog's proteins signal. Binding of sonic hedgehog (SHH) to its receptor patched is thought to prevent normal inhibition by patched of smoothened (SMO). Required for the accumulation of KIF7 and GLI3 in the cilia.

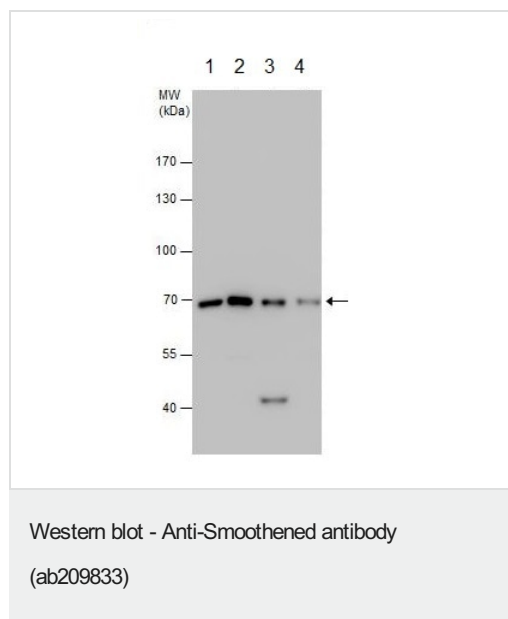
Sequence similarities

Belongs to the G-protein coupled receptor Fz/Smo family.
Contains 1 FZ (frizzled) domain.

Cellular localization

Membrane.

Images



All lanes : Anti-Smoothered antibody (ab209833) at 1/2000 dilution

Lane 1 : Zebrafish brain extract

Lane 2 : Zebrafish heart extract

Lane 3 : Zebrafish liver extract

Lane 4 : Zebrafish muscle extract

Lysates/proteins at 30 µg per lane.

7.5% SDS PAGE

Please note: All products are "FOR RESEARCH USE ONLY. NOT FOR USE IN DIAGNOSTIC PROCEDURES"

Our Abpromise to you: Quality guaranteed and expert technical support

- Replacement or refund for products not performing as stated on the datasheet
- Valid for 12 months from date of delivery
- Response to your inquiry within 24 hours
- We provide support in Chinese, English, French, German, Japanese and Spanish
- Extensive multi-media technical resources to help you

- We investigate all quality concerns to ensure our products perform to the highest standards

If the product does not perform as described on this datasheet, we will offer a refund or replacement. For full details of the Abpromise, please visit <https://www.abcam.com/abpromise> or contact our technical team.

Terms and conditions

- Guarantee only valid for products bought direct from Abcam or one of our authorized distributors