

Product datasheet

Anti-SNAIL + SLUG antibody [20C8] ab78105

★ ★ ★ ★ ★ [2 Abreviews](#) [5 References](#) [2 Images](#)

Overview

| | |
|----------------------------|---|
| Product name | Anti-SNAIL + SLUG antibody [20C8] |
| Description | Mouse monoclonal [20C8] to SNAIL + SLUG |
| Host species | Mouse |
| Specificity | This antibody detects endogenous proteins in the following cell lines: MDAMB-453; MDAMB-435; MDAMB-231; A375. |
| Tested applications | Suitable for: Sandwich ELISA, WB |
| Species reactivity | Reacts with: Human |
| Immunogen | Recombinant full length protein (Human) |
| General notes | <p>The Life Science industry has been in the grips of a reproducibility crisis for a number of years. Abcam is leading the way in addressing this with our range of recombinant monoclonal antibodies and knockout edited cell lines for gold-standard validation. Please check that this product meets your needs before purchasing.</p> <p>If you have any questions, special requirements or concerns, please send us an inquiry and/or contact our Support team ahead of purchase. Recommended alternatives for this product can be found below, along with publications, customer reviews and Q&As</p> |

Properties

| | |
|-----------------------------|---|
| Form | Liquid |
| Storage instructions | Shipped at 4°C. Upon delivery aliquot and store at -20°C or -80°C. Avoid repeated freeze / thaw cycles. |
| Storage buffer | Preservative: 0.02% Sodium azide Constituent: 99.98% PBS |
| Purity | Protein A/G purified |
| Clonality | Monoclonal |
| Clone number | 20C8 |
| Isotype | IgG1 |

Applications

The Abpromise guarantee

Our **Abpromise guarantee** covers the use of ab78105 in the following tested applications.

The application notes include recommended starting dilutions; optimal dilutions/concentrations should be determined by the end user.

| Application | Abreviews | Notes |
|----------------|-----------|---|
| Sandwich ELISA | | Use a concentration of 1 µg/ml. For sandwich ELISA, use this antibody as Capture at 1 µg/ml with Rabbit polyclonal to SNAIL - ChIP Grade (ab85931) as Detection. |
| WB | ★☆☆☆☆ (1) | 1/250. Predicted molecular weight: 29 kDa. |

Target

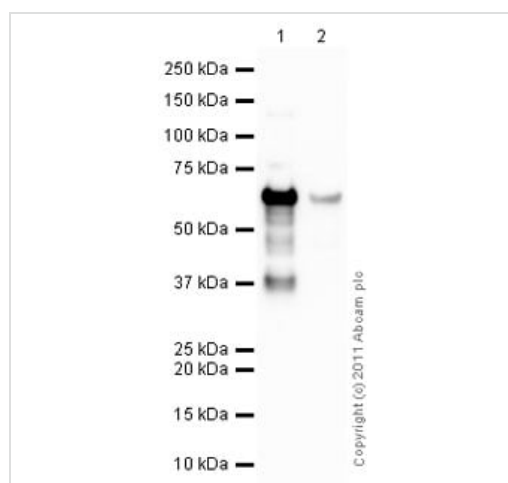
Relevance

Function: SNAIL is involved in the epithelial to mesenchymal transition (EMT) and formation and maintenance of embryonic mesoderm (By similarity). Binds to 3 E-boxes of the E-cadherin gene promoter and represses its transcription. SLUG is a transcriptional repressor, involved in the generation and migration of neural crest cells. PTM: SNAIL is phosphorylated by GSK3B. Once phosphorylated, it becomes a target for BTRC ubiquitination. Ubiquitinated on Lys-98, Lys-137 and Lys-146 by FBXL14 and BTRC leading to degradation. BTRC-triggered ubiquitination requires previous GSK3B-mediated SNAI1 phosphorylation. Similarity: Both SNAIL and SLUG belong to the snail C2H2-type zinc-finger protein family. Tissue specificity: SNAIL is expressed in a variety of tissues with the highest expression in kidney. Expressed in mesenchymal and epithelial cell lines. SLUG is expressed in placenta and adult heart, pancreas, liver, kidney and skeletal muscle.

Cellular localization

Slug is generally nuclear, while Snail is known to be both cytoplasmic and nuclear. Once phosphorylated (probably on Ser-107, Ser-111, Ser-115 and Ser-119) snail is exported from the nucleus to the cytoplasm where subsequent phosphorylation of the destruction motif and ubiquitination involving BTRC occurs.

Images



Western blot - Anti-SNAIL + SLUG antibody [20C8] (ab78105)

All lanes : Anti-SNAIL + SLUG antibody [20C8] (ab78105) at 1/250 dilution

Lane 1 : SNAIL (SNAI1) Human Recombinant Protein

Lane 2 : SLUG (SNAI2) Human Recombinant Protein

Lysates/proteins at 0.1 µg per lane.

Secondary

All lanes : Goat Anti-Mouse IgG H&L (HRP) preadsorbed (**ab97040**) at 1/5000 dilution

Developed using the ECL technique.

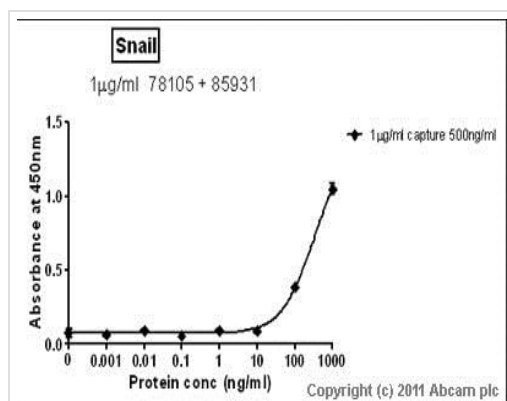
Performed under reducing conditions.

Predicted band size: 29 kDa

Observed band size: 68 kDa

Exposure time: 3 minutes

Ab78105 recognizes the tagged recombinant SLUG and SNAIL proteins which have an expected molecular weight of 68 kDa



Standard Curve for SNAIL ; dilution range 1pg/ml to 1µg/ml using Capture Antibody **Mouse monoclonal [20C8] to SNAIL + SLUG (ab78105)** at 1µg/ml and Detector Antibody **Rabbit polyclonal to SNAIL + SLUG - CHIP Grade (ab85931)** at 0.5µg/ml.

Sandwich ELISA - Anti-SNAIL + SLUG antibody
[20C8] (ab78105)

Please note: All products are "FOR RESEARCH USE ONLY. NOT FOR USE IN DIAGNOSTIC PROCEDURES"

Our Abpromise to you: Quality guaranteed and expert technical support

- Replacement or refund for products not performing as stated on the datasheet
- Valid for 12 months from date of delivery
- Response to your inquiry within 24 hours
- We provide support in Chinese, English, French, German, Japanese and Spanish
- Extensive multi-media technical resources to help you
- We investigate all quality concerns to ensure our products perform to the highest standards

If the product does not perform as described on this datasheet, we will offer a refund or replacement. For full details of the Abpromise, please visit <https://www.abcam.com/abpromise> or contact our technical team.

Terms and conditions

- Guarantee only valid for products bought direct from Abcam or one of our authorized distributors