


# Anti-SNAP25 antibody ab41726

★★★★☆ [2 Abreviews](#) [3 Images](#)

### Overview

---

<b>Product name</b>	Anti-SNAP25 antibody
<b>Description</b>	Rabbit polyclonal to SNAP25
<b>Host species</b>	Rabbit
<b>Specificity</b>	From Jan 2024, QC testing of replenishment batches of this polyclonal changed. All tested and expected application and reactive species combinations are still covered by our Abcam product promise. However, we no longer test all applications. For more information on a specific batch, please contact our Scientific Support who will be happy to help.
<b>Tested applications</b>	<b>Suitable for:</b> IP, WB <b>Unsuitable for:</b> ICC/IF
<b>Species reactivity</b>	<b>Reacts with:</b> Mouse, Rat, Human, Zebrafish <b>Predicted to work with:</b> Chicken, Cow, Drosophila melanogaster 
<b>Immunogen</b>	Synthetic peptide. This information is proprietary to Abcam and/or its suppliers.
<b>Positive control</b>	This antibody gave a positive signal in the following lysates: Spinal Cord (Mouse) Tissue Lysate, Spinal Cord (Rat) Tissue lysate, Hippocampus (Mouse) Tissue Lysate.
<b>General notes</b>	<p>The Life Science industry has been in the grips of a reproducibility crisis for a number of years. Abcam is leading the way in addressing this with our range of recombinant monoclonal antibodies and knockout edited cell lines for gold-standard validation. Please check that this product meets your needs before purchasing.</p> <p>If you have any questions, special requirements or concerns, please send us an inquiry and/or contact our Support team ahead of purchase. Recommended alternatives for this product can be found below, along with publications, customer reviews and Q&amp;As</p>

### Properties

---

<b>Form</b>	Liquid
<b>Storage instructions</b>	Shipped at 4°C. Store at +4°C short term (1-2 weeks). Upon delivery aliquot. Store at -20°C or -80°C. Avoid freeze / thaw cycle.
<b>Storage buffer</b>	pH: 7.40 Preservative: 0.02% Sodium azide Constituent: PBS

Batches of this product that have a concentration < 1mg/ml may have BSA added as a stabilising agent. If you would like information about the formulation of a specific lot, please contact our scientific support team who will be happy to help.

<b>Purity</b>	Immunogen affinity purified
<b>Clonality</b>	Polyclonal
<b>Isotype</b>	IgG

## Applications

**The Abpromise guarantee** Our **Abpromise guarantee** covers the use of ab41726 in the following tested applications. The application notes include recommended starting dilutions; optimal dilutions/concentrations should be determined by the end user.

Application	Abreviews	Notes
IP		Use a concentration of 5 µg/ml.
WB	★★★★★ (1)	Use a concentration of 1 µg/ml. Detects a band of approximately 26 kDa (predicted molecular weight: 23 kDa).

**Application notes** Is unsuitable for ICC/IF.

## Target

**Function** t-SNARE involved in the molecular regulation of neurotransmitter release. May play an important role in the synaptic function of specific neuronal systems. Associates with proteins involved in vesicle docking and membrane fusion. Regulates plasma membrane recycling through its interaction with CENPF.

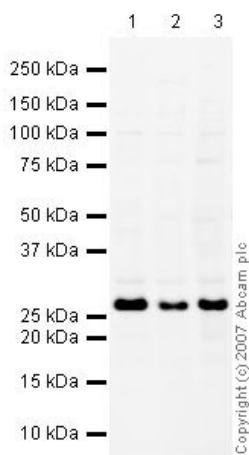
**Tissue specificity** Neurons of the neocortex, hippocampus, piriform cortex, anterior thalamic nuclei, pontine nuclei, and granule cells of the cerebellum.

**Sequence similarities** Belongs to the SNAP-25 family.  
Contains 2 t-SNARE coiled-coil homology domains.

**Post-translational modifications** Palmitoylated. Cys-85 appears to be the main site, and palmitoylation is required for membrane association.

**Cellular localization** Cytoplasm > perinuclear region. Cell membrane. Cell junction > synapse > synaptosome. Membrane association requires palmitoylation. Expressed throughout cytoplasm, concentrating at the perinuclear region.

## Images



Western blot - Anti-SNAP25 antibody (ab41726)

**All lanes :** Anti-SNAP25 antibody (ab41726) at 1 µg/ml

**Lane 1 :** Spinal Cord (Mouse) Tissue Lysate

**Lane 2 :** Spinal Cord (Rat) Tissue lysate

**Lane 3 :** Mouse brain tissue lysate - total protein (0 days) (**ab7188**)

Lysates/proteins at 10 µg per lane.

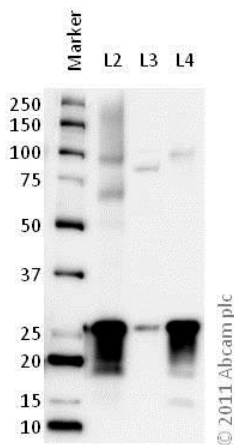
### Secondary

**All lanes :** IRDye 680 Conjugated Goat Anti-Rabbit IgG (H+L) at 1/10000 dilution

Performed under reducing conditions.

**Predicted band size:** 23 kDa

**Observed band size:** 26 kDa



Western blot - Anti-SNAP25 antibody (ab41726)

**All lanes :** Anti-SNAP25 antibody (ab41726) at 1 µg/ml

**Lane 1 :** Marker

**Lane 2 :** Zebrafish brain homogenate at 20 µg

**Lane 3 :** SH-SY5Y (Human neuroblastoma cell line) whole cell lysate at 20 µg

**Lane 4 :** Mouse brain homogenate at 20 µg

### Secondary

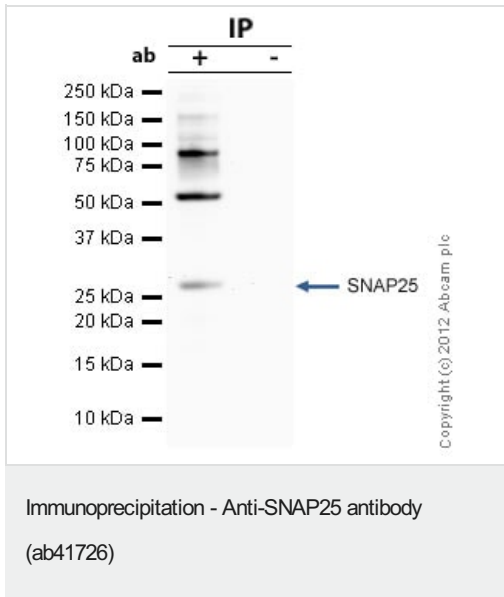
**All lanes :** Goat polyclonal to Rabbit IgG – H&L – Pre-Adsorbed (HRP) at 1/6000 dilution

Developed using the ECL technique.

Performed under reducing conditions.

**Predicted band size:** 23 kDa

**Observed band size:** 26 kDa



SNAP25 was immunoprecipitated using 0.5mg Rat Spinal Cord tissue lysate, 5µg of Rabbit polyclonal to SNAP25 and 50µl of protein G magnetic beads (+). No antibody was added to the control (-).

The antibody was incubated under agitation with Protein G beads for 10min, Rat Spinal Cord tissue lysate lysate diluted in RIPA buffer was added to each sample and incubated for a further 10min under agitation.

Proteins were eluted by addition of 40µl SDS loading buffer and incubated for 10min at 70°C; 10µl of each sample was separated on a SDS PAGE gel, transferred to a nitrocellulose membrane, blocked with 5% BSA and probed with ab41726.

Secondary: Clean-Blot IP Detection Reagent (HRP) at 1/500 dilution.

Band: 26kDa; SNAP25; non specific bands - 55 and 98kDa: We are unsure as to the identity of this extra band.

**Please note:** All products are "FOR RESEARCH USE ONLY. NOT FOR USE IN DIAGNOSTIC PROCEDURES"

### Our Abpromise to you: Quality guaranteed and expert technical support

- Replacement or refund for products not performing as stated on the datasheet
- Valid for 12 months from date of delivery
- Response to your inquiry within 24 hours
- We provide support in Chinese, English, French, German, Japanese and Spanish
- Extensive multi-media technical resources to help you
- We investigate all quality concerns to ensure our products perform to the highest standards

If the product does not perform as described on this datasheet, we will offer a refund or replacement. For full details of the Abpromise, please visit <https://www.abcam.com/abpromise> or contact our technical team.

### Terms and conditions

- Guarantee only valid for products bought direct from Abcam or one of our authorized distributors