


## Product datasheet

# Anti-SOCS2 antibody [EPR2588(2)] ab109245

Recombinant RabMAb

[4 References](#) [5 Images](#)

### Overview

<b>Product name</b>	Anti-SOCS2 antibody [EPR2588(2)]
<b>Description</b>	Rabbit monoclonal [EPR2588(2)] to SOCS2
<b>Host species</b>	Rabbit
<b>Tested applications</b>	<b>Suitable for:</b> WB, IP, Flow Cyt (Intra), ICC/IF
<b>Species reactivity</b>	<b>Reacts with:</b> Human <b>Predicted to work with:</b> Mouse, Rat 
<b>Immunogen</b>	Synthetic peptide. This information is proprietary to Abcam and/or its suppliers.
<b>Positive control</b>	WB: NCCIT and K-562 whole cell lysates; IP: K-562 whole cell lysate; Flow Cyt (intra): HeLa cells; ICC/IF: MCF7 cells.
<b>General notes</b>	<p>This product is a recombinant monoclonal antibody, which offers several advantages including:</p> <ul style="list-style-type: none"><li>- High batch-to-batch consistency and reproducibility</li><li>- Improved sensitivity and specificity</li><li>- Long-term security of supply</li><li>- Animal-free production</li></ul> <p>For more information <a href="#">see here</a>.</p> <p>Our RabMAb<sup>®</sup> technology is a patented hybridoma-based technology for making rabbit monoclonal antibodies. For details on our patents, please refer to <a href="#">RabMAb<sup>®</sup> patents</a>.</p>

### Properties

<b>Form</b>	Liquid
<b>Storage instructions</b>	Shipped at 4°C. Store at +4°C short term (1-2 weeks). Upon delivery aliquot. Store at -20°C. Stable for 12 months at -20°C.
<b>Storage buffer</b>	pH: 7.20 Preservative: 0.01% Sodium azide Constituents: 0.05% BSA, 40% Glycerol (glycerin, glycerine), 59% PBS
<b>Purity</b>	Protein A purified
<b>Clonality</b>	Monoclonal
<b>Clone number</b>	EPR2588(2)

Isotype

IgG

## Applications

---

### The Abpromise guarantee

Our **Abpromise guarantee** covers the use of ab109245 in the following tested applications.

The application notes include recommended starting dilutions; optimal dilutions/concentrations should be determined by the end user.

Application	Abreviews	Notes
WB		1/1000 - 1/10000. Predicted molecular weight: 22 kDa.
IP		1/10 - 1/100.
Flow Cyt (Intra)		1/150.
ICC/IF		1/100 - 1/250.

## Target

---

### Function

SOCS family proteins form part of a classical negative feedback system that regulates cytokine signal transduction. SOCS2 appears to be a negative regulator in the growth hormone/IGF1 signaling pathway. Probable substrate recognition component of a SCF-like ECS (Elongin BC-CUL2/5-SOCS-box protein) E3 ubiquitin-protein ligase complex which mediates the ubiquitination and subsequent proteasomal degradation of target proteins.

### Tissue specificity

High expression in heart, placenta, lung, kidney and prostate.

### Pathway

Protein modification; protein ubiquitination.

### Sequence similarities

Contains 1 SH2 domain.  
Contains 1 SOCS box domain.

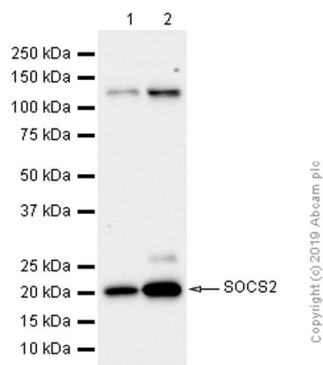
### Domain

The SOCS box domain mediates the interaction with the Elongin BC complex, an adapter module in different E3 ubiquitin ligase complexes.

---

## Images

---



Western blot - Anti-SOCS2 antibody [EPR2588(2)] (ab109245)

**All lanes :** Anti-SOCS2 antibody [EPR2588(2)] (ab109245) at 1/2000 dilution (purified)

**Lane 1 :** NCCIT (Human pluripotent embryonic carcinoma epithelial cell) whole cell lysate

**Lane 2 :** K-562 (Human chronic myelogenous leukemia lymphoblast) whole cell lysate

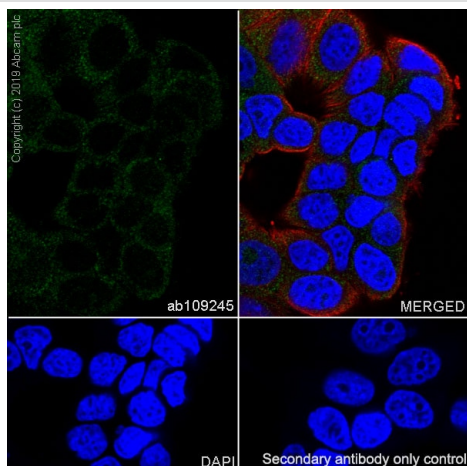
Lysates/proteins at 20 µg per lane.

### Secondary

**All lanes :** Goat Anti-Rabbit IgG (HRP) with minimal cross-reactivity with human IgG at 1/2000 dilution

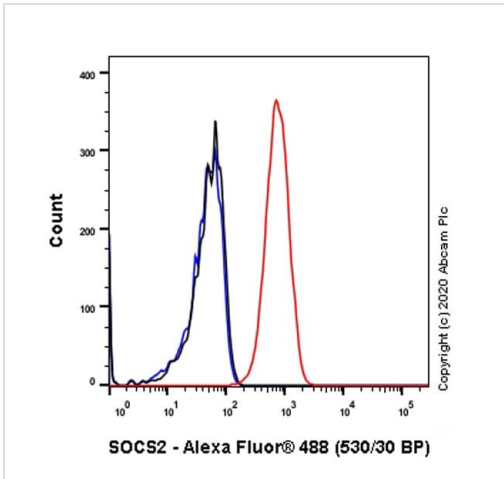
**Predicted band size:** 22 kDa

**Observed band size:** 22 kDa



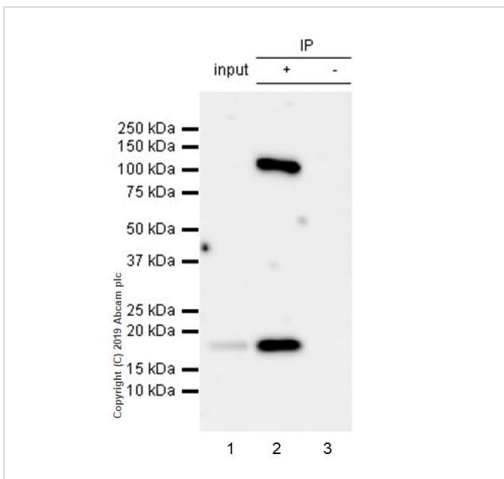
Immunocytochemistry/ Immunofluorescence - Anti-SOCS2 antibody [EPR2588(2)] (ab109245)

Immunocytochemistry/ Immunofluorescence analysis of MCF7 (Human breast adenocarcinoma epithelial cell) cells labeling SOCS2 with purified ab109245 at 1/100 dilution (10 µg/mL). Cells were fixed in 4% Paraformaldehyde and permeabilized with 0.1% TritonX-100. Cells were counterstained with Ab195889 Anti-alpha Tubulin antibody [DM1A] - Microtubule Marker (Alexa Fluor® 594) 1/200 (2.5 µg/mL). Goat anti rabbit IgG (Alexa Fluor® 488, **ab150077**) was used as the secondary antibody at 1/1000 (2 µg/mL) dilution. DAPI (blue) was used as nuclear counterstain. PBS instead of the primary antibody was used as the secondary antibody only control.



Flow Cytometry (Intracellular) - Anti-SOCS2 antibody [EPR2588(2)] (ab109245)

Intracellular Flow Cytometry analysis of HeLa (Human cervix adenocarcinoma epithelial cell) cells labeling SOCS2 with purified ab109245 at 1/150 dilution (10µg/mL) (Red). Cells were fixed with 4% Paraformaldehyde and permeabilised with 90% Methanol. A Goat anti rabbit IgG (Alexa Fluor® 488, **ab150077**) secondary antibody was used at 1/2000. Isotype control - Rabbit monoclonal IgG (Black). Unlabeled control - Cell without incubation with primary antibody and secondary antibody (Blue).



Immunoprecipitation - Anti-SOCS2 antibody [EPR2588(2)] (ab109245)

Purified ab109245 at 1/70 dilution (2 µg) immunoprecipitating SOCS2 in K-562 whole cell lysate.

Lane 1 (input): K-562 (Human chronic myelogenous leukemia lymphoblast) whole cell lysate 10 µg

Lane 2 (+): ab109245 + K-562 whole cell lysate.

Lane 3 (-): Rabbit monoclonal IgG (**ab172730**) instead of ab109245 in K-562 whole cell lysate.

VeriBlot for IP Detection Reagent (HRP) (**ab131366**) (1/1000 dilution) was used for Western blotting.

Blocking Buffer and concentration: 5% NFDm/TBST.

Diluting buffer and concentration: 5% NFDm/TBST.

Observed band size: 22 kDa

Why choose a recombinant antibody?

- Research with confidence**  
Consistent and reproducible results
- Long-term and scalable supply**  
Recombinant technology
- Success from the first experiment**  
Confirmed specificity
- Ethical standards compliant**  
Animal-free production

Anti-SOCS2 antibody [EPR2588(2)] (ab109245)

### **Our Abpromise to you: Quality guaranteed and expert technical support**

---

- Replacement or refund for products not performing as stated on the datasheet
- Valid for 12 months from date of delivery
- Response to your inquiry within 24 hours
  
- We provide support in Chinese, English, French, German, Japanese and Spanish
- Extensive multi-media technical resources to help you
- We investigate all quality concerns to ensure our products perform to the highest standards

If the product does not perform as described on this datasheet, we will offer a refund or replacement. For full details of the Abpromise, please visit <https://www.abcam.com/abpromise> or contact our technical team.

### **Terms and conditions**

---

- Guarantee only valid for products bought direct from Abcam or one of our authorized distributors