


## Product datasheet

# Anti-Somatostatin Receptor 1/SSTR1 antibody ab100881

★☆☆☆☆ [1 Abreviews](#) [1 References](#) [3 Images](#)

### Overview

<b>Product name</b>	Anti-Somatostatin Receptor 1/SSTR1 antibody
<b>Description</b>	Rabbit polyclonal to Somatostatin Receptor 1/SSTR1
<b>Host species</b>	Rabbit
<b>Tested applications</b>	<b>Suitable for:</b> ICC/IF
<b>Species reactivity</b>	<b>Reacts with:</b> Rat <b>Predicted to work with:</b> Horse, Cow, Dog, Human, Pig 
<b>Immunogen</b>	Synthetic peptide corresponding to Mouse Somatostatin Receptor 1/SSTR1 aa 374-391 (C terminal). Sequence: ESGGVFRNGTCASRISTL

 [Run BLAST with](#)

 [Run BLAST with](#)

### General notes

The Life Science industry has been in the grips of a reproducibility crisis for a number of years. Abcam is leading the way in addressing this with our range of recombinant monoclonal antibodies and knockout edited cell lines for gold-standard validation. Please check that this product meets your needs before purchasing.

If you have any questions, special requirements or concerns, please send us an inquiry and/or contact our Support team ahead of purchase. Recommended alternatives for this product can be found below, along with publications, customer reviews and Q&As

### Properties

<b>Form</b>	Liquid
<b>Storage instructions</b>	Shipped at 4°C. Upon delivery aliquot and store at -20°C. Avoid freeze / thaw cycles.
<b>Storage buffer</b>	Preservative: 0.02% Sodium azide Constituent: Whole serum
<b>Purity</b>	Whole antiserum
<b>Clonality</b>	Polyclonal
<b>Isotype</b>	IgG

### Applications

## The Abpromise guarantee

Our **Abpromise guarantee** covers the use of ab100881 in the following tested applications.

The application notes include recommended starting dilutions; optimal dilutions/concentrations should be determined by the end user.

Application	Abreviews	Notes
ICC/IF		Use at an assay dependent concentration.

## Target

### Function

Receptor for somatostatin with higher affinity for somatostatin-14 than -28. This receptor is coupled via pertussis toxin sensitive G proteins to inhibition of adenylyl cyclase. In addition it stimulates phosphotyrosine phosphatase and Na(+)/H(+) exchanger via pertussis toxin insensitive G proteins.

### Tissue specificity

Fetal kidney, fetal liver, and adult pancreas, brain, lung, jejunum and stomach.

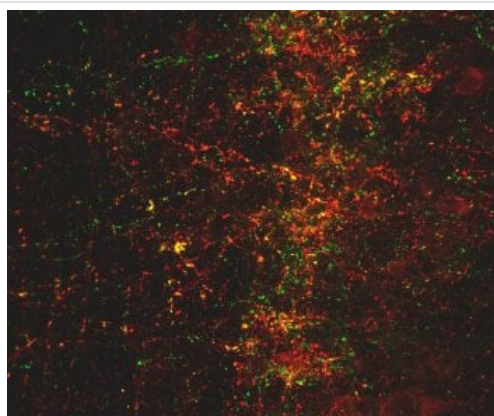
### Sequence similarities

Belongs to the G-protein coupled receptor 1 family.

### Cellular localization

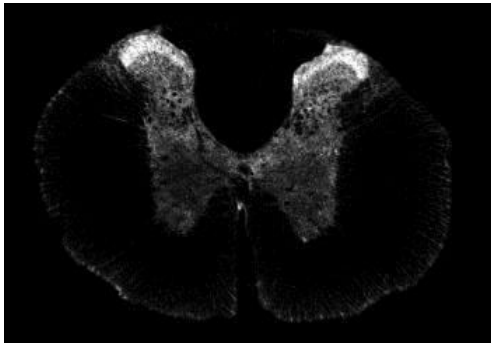
Cell membrane.

## Images



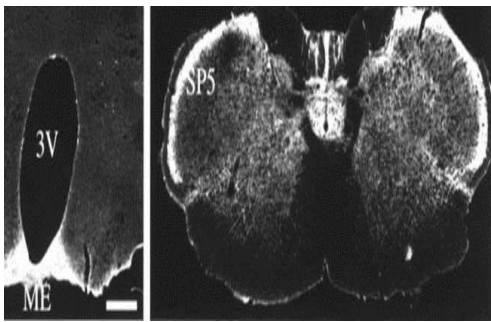
ab100881 at 1/5000 showing dual labeling of anti-sst1 (green) and somatostatin (red). Anti-Sst1 shows sst1 in neuronal terminals co-localized with somatostatin

Immunocytochemistry/ Immunofluorescence - Anti-Somatostatin Receptor 1/SSTR1 antibody (ab100881)



Immunocytochemistry/ Immunofluorescence - Anti-Somatostatin Receptor 1/SSTR1 antibody (ab100881)

ab100881 showing anti-Sst1 depicts sst1 as a presynaptic receptor in the superficial layers of the spinal cord dorsal horn.



Immunocytochemistry/ Immunofluorescence - Anti-Somatostatin Receptor 1/SSTR1 antibody (ab100881)

Immunocytochemistry/ Immunofluorescence showing Somatostatin Receptor 1/SSTR1 staining in rat brain using ab100881.

**Please note:** All products are "FOR RESEARCH USE ONLY. NOT FOR USE IN DIAGNOSTIC PROCEDURES"

### Our Abpromise to you: Quality guaranteed and expert technical support

- Replacement or refund for products not performing as stated on the datasheet
- Valid for 12 months from date of delivery
- Response to your inquiry within 24 hours
- We provide support in Chinese, English, French, German, Japanese and Spanish
- Extensive multi-media technical resources to help you
- We investigate all quality concerns to ensure our products perform to the highest standards

If the product does not perform as described on this datasheet, we will offer a refund or replacement. For full details of the Abpromise, please visit <https://www.abcam.com/abpromise> or contact our technical team.

### Terms and conditions

- Guarantee only valid for products bought direct from Abcam or one of our authorized distributors