


Product datasheet

Anti-Sp5 antibody ab36593

★★★★☆ [3 Abreviews](#) [3 References](#) [2 Images](#)

Overview

| | |
|----------------------------|---|
| Product name | Anti-Sp5 antibody |
| Description | Rabbit polyclonal to Sp5 |
| Host species | Rabbit |
| Specificity | From Jan 2024, QC testing of replenishment batches of this polyclonal changed. All tested and expected application and reactive species combinations are still covered by our Abcam product promise. However, we no longer test all applications. For more information on a specific batch, please contact our Scientific Support who will be happy to help. |
| Tested applications | Suitable for: WB, ICC/IF |
| Species reactivity | Reacts with: Human Predicted to work with: Mouse, Chicken  |
| Immunogen | Synthetic peptide corresponding to Human Sp5 aa 50-150 conjugated to keyhole limpet haemocyanin. (Peptide available as ab36592) |
| Positive control | This antibody gave a positive signal in the following whole cell lysates: HeLa, Jurkat, A431, HEK293, HepG2, MCF7, SHSY-5Y and U20S. |
| General notes | <p>The Life Science industry has been in the grips of a reproducibility crisis for a number of years. Abcam is leading the way in addressing this with our range of recombinant monoclonal antibodies and knockout edited cell lines for gold-standard validation. Please check that this product meets your needs before purchasing.</p> <p>If you have any questions, special requirements or concerns, please send us an inquiry and/or contact our Support team ahead of purchase. Recommended alternatives for this product can be found below, along with publications, customer reviews and Q&As</p> |

Properties

| | |
|-----------------------------|--|
| Form | Liquid |
| Storage instructions | Shipped at 4°C. Store at +4°C short term (1-2 weeks). Upon delivery aliquot. Store at -20°C or -80°C. Avoid freeze / thaw cycle. |
| Storage buffer | pH: 7.40 Preservative: 0.02% Sodium azide Constituent: PBS |

Batches of this product that have a concentration < 1mg/ml may have BSA added as a stabilising agent. If you would like information about the formulation of a specific lot, please contact our scientific support team who will be happy to help.

| | |
|------------------|-----------------------------|
| Purity | Immunogen affinity purified |
| Clonality | Polyclonal |
| Isotype | IgG |

Applications

The Abpromise guarantee Our **Abpromise guarantee** covers the use of ab36593 in the following tested applications. The application notes include recommended starting dilutions; optimal dilutions/concentrations should be determined by the end user.

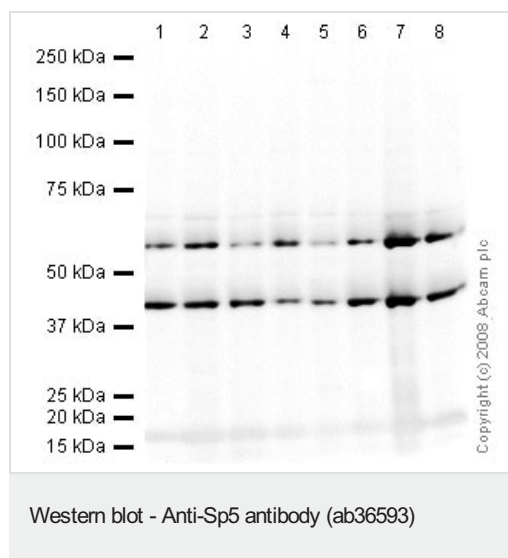
| Application | Abreviews | Notes |
|---------------|-----------|--|
| WB | ★★★★★ (1) | Use a concentration of 1 µg/ml. Detects a band of approximately 42 kDa (predicted molecular weight: 42 kDa). |
| ICC/IF | | Use a concentration of 5 µg/ml. |

Target

Relevance Sp5 is a member of the Sp family of zinc finger transcription factors. Like other family members, the Sp5 protein contains a Cys2His2 zinc finger DNA binding domain at the C-terminus. Elevated expression of Sp5 has been noted in several human tumors including hepatocellular carcinoma, gastric cancer and colon cancer.

Cellular localization Nuclear

Images



All lanes : Anti-Sp5 antibody (ab36593) at 1 µg/ml

Lane 1 : HeLa (Human epithelial carcinoma cell line) Whole Cell Lysate

Lane 2 : Jurkat (Human T cell lymphoblast-like cell line) Whole Cell Lysate

Lane 3 : A431 (Human epithelial carcinoma cell line) Whole Cell Lysate

Lane 4 : HEK293 Human embryonic kidney cell line Whole Cell Lysate

Lane 5 : HepG2 (Human hepatocellular liver carcinoma cell line) Whole Cell Lysate

Lane 6 : MCF7 (Human breast adenocarcinoma cell line) Whole Cell Lysate

Lane 7 : SHSY-5Y (Human neuroblastoma cell line) Whole Cell Lysate

Lane 8 : U2OS (Human osteosarcoma cell line) Whole Cell Lysate

Lysates/proteins at 10 µg per lane.

Secondary

All lanes : Goat polyclonal to Rabbit IgG - H&L - Pre-Adsorbed (HRP) at 1/3000 dilution

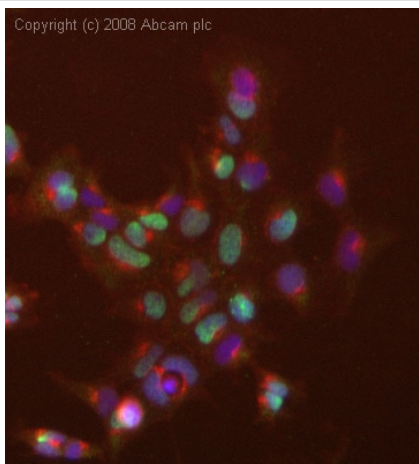
Performed under reducing conditions.

Predicted band size: 42 kDa

Observed band size: 42 kDa

Additional bands at: 58 kDa. We are unsure as to the identity of these extra bands.

Copyright (c) 2008 Abcam plc



Immunocytochemistry/ Immunofluorescence - Anti-Sp5 antibody (ab36593)

ICC/IF image of ab36593 stained human HEK 293 cells. The cells were 4% PFA fixed (10 min), permeabilised in 0.1% PBS-Tween (20 min) and incubated with the antibody (ab36593, 5µg/ml) for 1h at room temperature. 1%BSA / 10% normal goat serum / 0.3M glycine was used to block non-specific protein-protein interactions. The secondary antibody (green) was Alexa Fluor® 488 goat anti-rabbit IgG (H+L) used at a 1/1000 dilution for 1h. Alexa Fluor® 594 WGA was used to label plasma membranes (red). DAPI was used to stain the cell nuclei (blue). This antibody also gave a positive IF result in HeLa and MCF7 cells.

Please note: All products are "FOR RESEARCH USE ONLY. NOT FOR USE IN DIAGNOSTIC PROCEDURES"

Our Abpromise to you: Quality guaranteed and expert technical support

- Replacement or refund for products not performing as stated on the datasheet
- Valid for 12 months from date of delivery
- Response to your inquiry within 24 hours
- We provide support in Chinese, English, French, German, Japanese and Spanish
- Extensive multi-media technical resources to help you
- We investigate all quality concerns to ensure our products perform to the highest standards

If the product does not perform as described on this datasheet, we will offer a refund or replacement. For full details of the Abpromise, please visit <https://www.abcam.com/abpromise> or contact our technical team.

Terms and conditions

- Guarantee only valid for products bought direct from Abcam or one of our authorized distributors