

Product datasheet

Anti-SPAK antibody ab79045

[2 References](#) [1 Image](#)

Overview

Product name	Anti-SPAK antibody
Description	Rabbit polyclonal to SPAK
Host species	Rabbit
Tested applications	Suitable for: WB
Species reactivity	Reacts with: Rat
Immunogen	Synthetic peptide corresponding to Human SPAK (internal sequence). Database link: NP_037365
General notes	<p>The Life Science industry has been in the grips of a reproducibility crisis for a number of years. Abcam is leading the way in addressing this with our range of recombinant monoclonal antibodies and knockout edited cell lines for gold-standard validation. Please check that this product meets your needs before purchasing.</p> <p>If you have any questions, special requirements or concerns, please send us an inquiry and/or contact our Support team ahead of purchase. Recommended alternatives for this product can be found below, along with publications, customer reviews and Q&As</p>

Properties

Form	Liquid
Storage instructions	Shipped at 4°C. Store at +4°C.
Storage buffer	pH: 7.2 Preservative: 0.02% Sodium azide Constituent: PBS
Purity	Immunogen affinity purified
Purification notes	Affinity chromatography purified via peptide column
Clonality	Polyclonal
Isotype	IgG

Applications

The Abpromise guarantee Our [Abpromise guarantee](#) covers the use of ab79045 in the following tested applications.

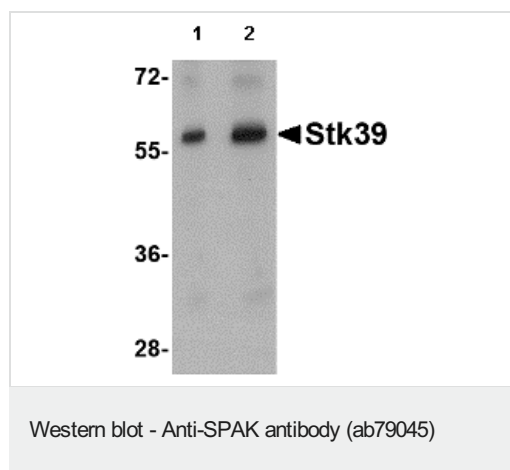
The application notes include recommended starting dilutions; optimal dilutions/concentrations should be determined by the end user.

Application	Abreviews	Notes
WB		Use a concentration of 1 - 2 µg/ml. Predicted molecular weight: 60 kDa.

Target

Function	May act as a mediator of stress-activated signals.
Tissue specificity	Predominantly expressed in brain and pancreas followed by heart, lung, kidney, skeletal muscle, liver, placenta and testis.
Sequence similarities	Belongs to the protein kinase superfamily. STE Ser/Thr protein kinase family. STE20 subfamily. Contains 1 protein kinase domain.
Domain	PAPA box (proline-alanine repeats) may target the kinase to a specific subcellular location by facilitating interaction with intracellular proteins such as actin or actin-like proteins.
Cellular localization	Cytoplasm. Nucleus. Nucleus when caspase-cleaved.

Images



Lane 1 : Anti-SPAK antibody (ab79045) at 1 µg/ml

Lane 2 : Anti-SPAK antibody (ab79045) at 2 µg/ml

All lanes : rat brain tissue lysate

Lysates/proteins at 15 µg per lane.

Predicted band size: 60 kDa

Observed band size: 60 kDa

Please note: All products are "FOR RESEARCH USE ONLY. NOT FOR USE IN DIAGNOSTIC PROCEDURES"

Our Abpromise to you: Quality guaranteed and expert technical support

- Replacement or refund for products not performing as stated on the datasheet
- Valid for 12 months from date of delivery
- Response to your inquiry within 24 hours
- We provide support in Chinese, English, French, German, Japanese and Spanish
- Extensive multi-media technical resources to help you
- We investigate all quality concerns to ensure our products perform to the highest standards

If the product does not perform as described on this datasheet, we will offer a refund or replacement. For full details of the Abpromise,

please visit <https://www.abcam.com/abpromise> or contact our technical team.

Terms and conditions

- Guarantee only valid for products bought direct from Abcam or one of our authorized distributors