

## Product datasheet

### Anti-SPC24 antibody [EPR11547(B)] ab157184

Recombinant RabMAb

★ ★ ★ ★ ★ [1 Abreviews](#) [1 References](#) [3 Images](#)

#### Overview

Product name	Anti-SPC24 antibody [EPR11547(B)]
Description	Rabbit monoclonal [EPR11547(B)] to SPC24
Host species	Rabbit
Tested applications	<b>Suitable for:</b> WB, ICC/IF <b>Unsuitable for:</b> Flow Cyt or IHC-P
Species reactivity	<b>Reacts with:</b> Human
Immunogen	Synthetic peptide. This information is proprietary to Abcam and/or its suppliers.
Positive control	293T, MOLT4, TF1 and HeLa cell lysates, Human thymus tissue lysate; 293T cells.
General notes	<p>This product is a recombinant monoclonal antibody, which offers several advantages including:</p> <ul style="list-style-type: none"> <li>- High batch-to-batch consistency and reproducibility</li> <li>- Improved sensitivity and specificity</li> <li>- Long-term security of supply</li> <li>- Animal-free production</li> </ul> <p>For more information <a href="#">see here</a>.</p> <p>Our RabMAb<sup>®</sup> technology is a patented hybridoma-based technology for making rabbit monoclonal antibodies. For details on our patents, please refer to <a href="#">RabMAb<sup>®</sup> patents</a>.</p> <p>Mouse, Rat: We have preliminary internal testing data to indicate this antibody may not react with these species. Please contact us for more information.</p>

#### Properties

Form	Liquid
Storage instructions	Shipped at 4°C. Store at -20°C.
Storage buffer	<p>pH: 7.2</p> <p>Preservative: 0.01% Sodium azide</p> <p>Constituents: 9% PBS, 40% Glycerol (glycerin, glycerine), 0.05% BSA, 50% Tissue culture supernatant</p>
Purity	Tissue culture supernatant
Clonality	Monoclonal

Clone number                      EPR11547(B)

Isotype                                IgG

Applications

**The Abpromise guarantee**                      Our **Abpromise guarantee** covers the use of ab157184 in the following tested applications. The application notes include recommended starting dilutions; optimal dilutions/concentrations should be determined by the end user.

Application	Abreviews	Notes
WB		1/1000 - 1/5000. Predicted molecular weight: 22 kDa.
ICC/IF	★☆☆☆☆ (1)	1/50 - 1/100.

**Application notes**                                Is unsuitable for Flow Cyt or IHC-P.

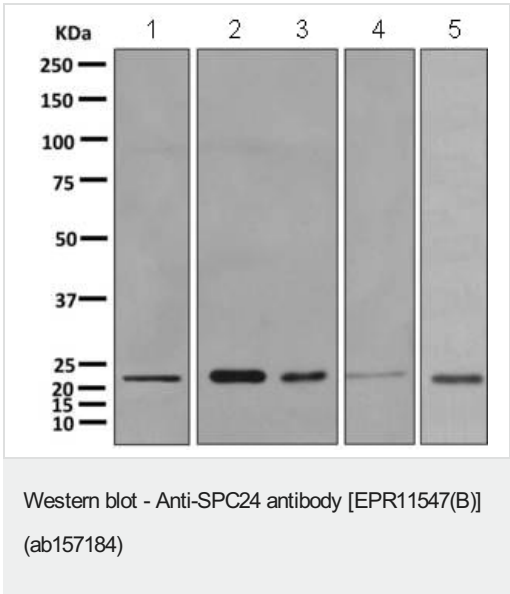
Target

**Function**    Acts as a component of the essential kinetochore-associated NDC80 complex, which is required for chromosome segregation and spindle checkpoint activity. Required for kinetochore integrity and the organization of stable microtubule binding sites in the outer plate of the kinetochore.

**Sequence similarities**                                Belongs to the SPC24 family.

**Cellular localization**                                Nucleus. Chromosome > centromere > kinetochore. Localizes to kinetochores from late prophase to anaphase. Localizes specifically to the outer plate of the kinetochore.

Images



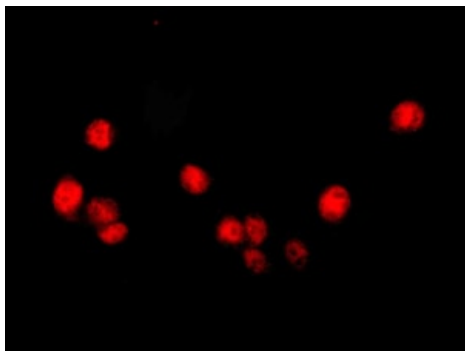
**All lanes :** Anti-SPC24 antibody [EPR11547(B)] (ab157184) at 1/1000 dilution

- Lane 1 :** 293T cell lysate
- Lane 2 :** MOLT4 cell lysate
- Lane 3 :** TF1 cell lysate
- Lane 4 :** HeLa cell lysate
- Lane 5 :** Human thymus tissue lysate

Lysates/proteins at 10 µg per lane.

**Secondary**  
**All lanes :** Goat anti-rabbit HRP at 1/2000 dilution

**Predicted band size:** 22 kDa



Immunofluorescent analysis of 293T cells, labeling SPC24 with ab157184 at 1/50 dilution.

Immunocytochemistry/ Immunofluorescence - Anti-SPC24 antibody [EPR11547(B)] (ab157184)

Why choose a recombinant antibody?



**Research with confidence**  
Consistent and reproducible results



**Long-term and scalable supply**  
Recombinant technology



**Success from the first experiment**  
Confirmed specificity



**Ethical standards compliant**  
Animal-free production

Anti-SPC24 antibody [EPR11547(B)] (ab157184)

**Please note:** All products are "FOR RESEARCH USE ONLY. NOT FOR USE IN DIAGNOSTIC PROCEDURES"

### Our Abpromise to you: Quality guaranteed and expert technical support

- Replacement or refund for products not performing as stated on the datasheet
- Valid for 12 months from date of delivery
- Response to your inquiry within 24 hours
- We provide support in Chinese, English, French, German, Japanese and Spanish
- Extensive multi-media technical resources to help you
- We investigate all quality concerns to ensure our products perform to the highest standards

If the product does not perform as described on this datasheet, we will offer a refund or replacement. For full details of the Abpromise, please visit <https://www.abcam.com/abpromise> or contact our technical team.

### Terms and conditions

- Guarantee only valid for products bought direct from Abcam or one of our authorized distributors