

Product datasheet

Anti-SPC24 antibody [EPR11548(B)] ab169786

Recombinant RabMAb

★★★★★ [1 Abreviews](#) [7 References](#) [3 Images](#)

Overview

Product name	Anti-SPC24 antibody [EPR11548(B)]
Description	Rabbit monoclonal [EPR11548(B)] to SPC24
Host species	Rabbit
Tested applications	Suitable for: WB, IP Unsuitable for: Flow Cyt or IHC-P
Species reactivity	Reacts with: Human
Immunogen	Synthetic peptide. This information is proprietary to Abcam and/or its suppliers.
Positive control	HeLa, 293T, MOLT4, 293 and TF1 cell lysates.
General notes	<p>This product is a recombinant monoclonal antibody, which offers several advantages including:</p> <ul style="list-style-type: none"> - High batch-to-batch consistency and reproducibility - Improved sensitivity and specificity - Long-term security of supply - Animal-free production <p>For more information see here.</p> <p>Our RabMAb[®] technology is a patented hybridoma-based technology for making rabbit monoclonal antibodies. For details on our patents, please refer to RabMAb[®] patents.</p> <p>Mouse, Rat: We have preliminary internal testing data to indicate this antibody may not react with these species. Please contact us for more information.</p>

Properties

Form	Liquid
Storage instructions	Shipped at 4°C. Store at +4°C short term (1-2 weeks). Upon delivery aliquot. Store at -20°C long term.
Storage buffer	<p>pH: 7.2</p> <p>Preservative: 0.01% Sodium azide</p> <p>Constituents: 9% PBS, 40% Glycerol (glycerin, glycerine), 0.05% BSA, 50% Tissue culture supernatant</p>
Purity	Tissue culture supernatant

Clonality	Monoclonal
Clone number	EPR11548(B)
Isotype	IgG

Applications

The Abpromise guarantee Our **Abpromise guarantee** covers the use of ab169786 in the following tested applications. The application notes include recommended starting dilutions; optimal dilutions/concentrations should be determined by the end user.

Application	Abreviews	Notes
WB		1/1000 - 1/5000. Predicted molecular weight: 22 kDa.
IP		1/10 - 1/100.

Application notes Is unsuitable for Flow Cyt or IHC-P.

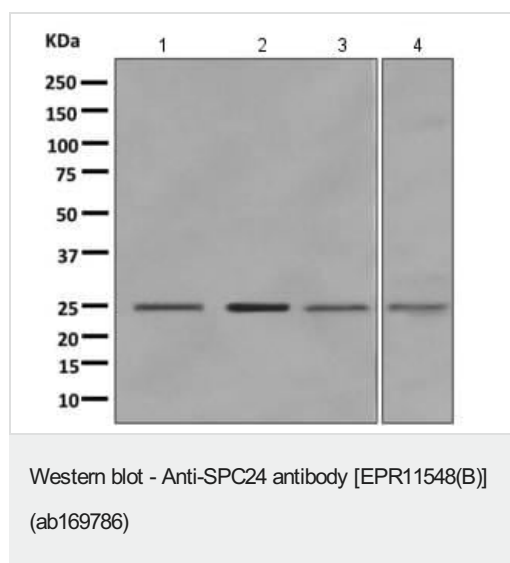
Target

Function Acts as a component of the essential kinetochore-associated NDC80 complex, which is required for chromosome segregation and spindle checkpoint activity. Required for kinetochore integrity and the organization of stable microtubule binding sites in the outer plate of the kinetochore.

Sequence similarities Belongs to the SPC24 family.

Cellular localization Nucleus. Chromosome > centromere > kinetochore. Localizes to kinetochores from late prophase to anaphase. Localizes specifically to the outer plate of the kinetochore.

Images



All lanes : Anti-SPC24 antibody [EPR11548(B)] (ab169786) at 1/1000 dilution

Lane 1 : HeLa cell lysate

Lane 2 : 293T (Human embryonic kidney epithelial cell) cell lysate

Lane 3 : MOLT4 cell lysate

Lane 4 : TF1 cell lysate

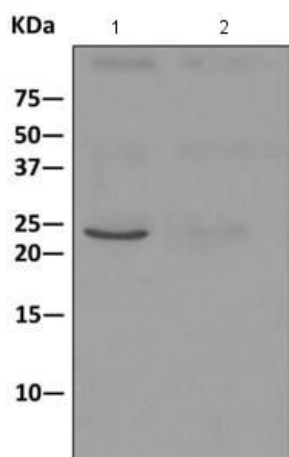
Lysates/proteins at 10 µg per lane.

Secondary

All lanes : Goat anti-rabbit HRP at 1/2000 dilution

Developed using the ECL technique.

Predicted band size: 22 kDa



Detection of SPC24 by Western Blot of Immunoprecipitate. 293 cell lysate (1) or 1X PBS (2) immunoprecipitated using ab169786 at 1/10 dilution; HRP-conjugated anti-rabbit IgG preferentially detecting the non-reduced form of rabbit IgG.

Immunoprecipitation - Anti-SPC24 antibody
[EPR11548(B)] (ab169786)

Why choose a
recombinant antibody?



Research with confidence
Consistent and reproducible results



Long-term and scalable supply
Recombinant technology



Success from the first experiment
Confirmed specificity



Ethical standards compliant
Animal-free production

Anti-SPC24 antibody [EPR11548(B)] (ab169786)

Please note: All products are "FOR RESEARCH USE ONLY. NOT FOR USE IN DIAGNOSTIC PROCEDURES"

Our Abpromise to you: Quality guaranteed and expert technical support

- Replacement or refund for products not performing as stated on the datasheet
- Valid for 12 months from date of delivery
- Response to your inquiry within 24 hours
- We provide support in Chinese, English, French, German, Japanese and Spanish
- Extensive multi-media technical resources to help you
- We investigate all quality concerns to ensure our products perform to the highest standards

If the product does not perform as described on this datasheet, we will offer a refund or replacement. For full details of the Abpromise, please visit <https://www.abcam.com/abpromise> or contact our technical team.

Terms and conditions

- Guarantee only valid for products bought direct from Abcam or one of our authorized distributors