


Anti-SPEN antibody ab72266

[3 References](#) [1 Image](#)

Overview

Product name	Anti-SPEN antibody
Description	Rabbit polyclonal to SPEN
Host species	Rabbit
Tested applications	Suitable for: IP, WB
Species reactivity	Reacts with: Human Predicted to work with: Mouse, Rabbit, Horse, Guinea pig, Dog, Chimpanzee, Rhesus monkey, Gorilla, Orangutan, Elephant 
Immunogen	Synthetic peptide corresponding to Human SPEN. Database link: Q96T58
Positive control	Whole cell lysate from Hela cells.
General notes	<p>The Life Science industry has been in the grips of a reproducibility crisis for a number of years. Abcam is leading the way in addressing this with our range of recombinant monoclonal antibodies and knockout edited cell lines for gold-standard validation. Please check that this product meets your needs before purchasing.</p> <p>If you have any questions, special requirements or concerns, please send us an inquiry and/or contact our Support team ahead of purchase. Recommended alternatives for this product can be found below, along with publications, customer reviews and Q&As</p>

Properties

Form	Liquid
Storage instructions	Shipped at 4°C. Upon delivery aliquot and store at -20°C. Avoid freeze / thaw cycles.
Storage buffer	pH: 7 Preservative: 0.09% Sodium azide Constituents: 1.815% Tris, 1.764% Sodium citrate, 0.021% PBS
Purity	Immunogen affinity purified
Clonality	Polyclonal
Isotype	IgG

Applications

The Abpromise guarantee

Our **Abpromise guarantee** covers the use of ab72266 in the following tested applications.

The application notes include recommended starting dilutions; optimal dilutions/concentrations should be determined by the end user.

Application	Abreviews	Notes
IP		Use at 2-5 µg/mg of lysate.
WB		Use at an assay dependent concentration.

Target

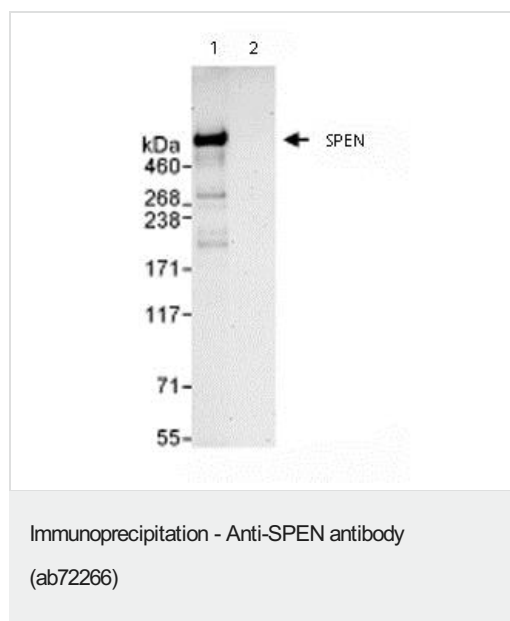
Relevance

SPEN is an essential corepressor protein, which probably regulates different key pathways such as the Notch pathway. It is a negative regulator of the Notch pathway via its interaction with RBPSUH, which prevents the association between NOTCH1 and RBPSUH, and therefore suppresses the transactivation activity of Notch signaling. SPEN blocks the differentiation of precursor B-cells into marginal zone B-cells. It probably represses transcription via the recruitment of large complexes containing histone deacetylase proteins. SPEN may bind both to DNA and RNA.

Cellular localization

Nuclear. Associates with chromatin.

Images



Immunoprecipitation/ Western Blot of SPEN.

Lane 1: ab72266 at 3µg/mg whole cell lysate.

Lane 2: Control IgG.

ab72266 at 1µg/ml for WB.

Whole cell lysate from Hela cells at 1mg for IP, 20% of IP loaded.

Chemiluminescence with an exposure time of 3 minutes.

Please note: All products are "FOR RESEARCH USE ONLY. NOT FOR USE IN DIAGNOSTIC PROCEDURES"

Our Abpromise to you: Quality guaranteed and expert technical support

- Replacement or refund for products not performing as stated on the datasheet
- Valid for 12 months from date of delivery

- Response to your inquiry within 24 hours
- We provide support in Chinese, English, French, German, Japanese and Spanish
- Extensive multi-media technical resources to help you
- We investigate all quality concerns to ensure our products perform to the highest standards

If the product does not perform as described on this datasheet, we will offer a refund or replacement. For full details of the Abpromise, please visit <https://www.abcam.com/abpromise> or contact our technical team.

Terms and conditions

- Guarantee only valid for products bought direct from Abcam or one of our authorized distributors