

## Product datasheet

### Anti-Spermine antibody ab26975

★★★★★ [3 Abreviews](#) [5 References](#) [1 Image](#)

#### Overview

<b>Product name</b>	Anti-Spermine antibody
<b>Description</b>	Rabbit polyclonal to Spermine
<b>Host species</b>	Rabbit
<b>Specificity</b>	This antibody reacts with spermine. Cross-reacts with spermidine 100%.
<b>Tested applications</b>	<b>Suitable for:</b> ICC/IF, WB
<b>Species reactivity</b>	<b>Reacts with:</b> Species independent
<b>Immunogen</b>	Spermine conjugated to KLH.
<b>General notes</b>	<p>Polyamines are substrates for transglutaminase enzymes and can be covalently conjugated to proteins. In this case Western Blot and other methods can be able to detect polyaminated proteins.</p> <p>The Life Science industry has been in the grips of a reproducibility crisis for a number of years. Abcam is leading the way in addressing this with our range of recombinant monoclonal antibodies and knockout edited cell lines for gold-standard validation. Please check that this product meets your needs before purchasing.</p> <p>If you have any questions, special requirements or concerns, please send us an inquiry and/or contact our Support team ahead of purchase. Recommended alternatives for this product can be found below, along with publications, customer reviews and Q&amp;As</p>

#### Properties

<b>Form</b>	Liquid
<b>Storage instructions</b>	Shipped at 4°C. Store at +4°C short term (1-2 weeks). Upon delivery aliquot. Store at -20°C long term. Avoid freeze / thaw cycle.
<b>Storage buffer</b>	Constituent: Whole serum
<b>Purity</b>	Whole antiserum
<b>Primary antibody notes</b>	Polyamines are substrates for transglutaminase enzymes and can be covalently conjugated to proteins. In this case Western Blot and other methods can be able to detect polyaminated proteins.
<b>Clonality</b>	Polyclonal

Isotype

IgG

## Applications

### The Abpromise guarantee

Our **Abpromise guarantee** covers the use of ab26975 in the following tested applications.

The application notes include recommended starting dilutions; optimal dilutions/concentrations should be determined by the end user.

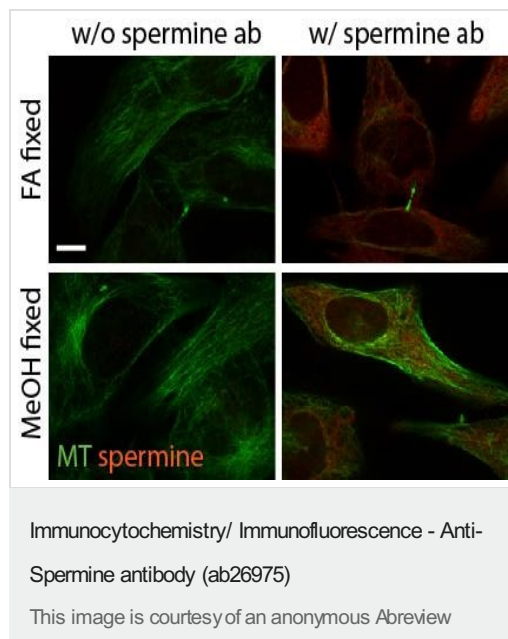
Application	Abreviews	Notes
ICC/IF	★★★★★ (1)	Use at an assay dependent concentration.
WB		1/1200 - 1/5000.

## Target

### Relevance

Spermine, a polyamine, is a positively charged compound found in living cells and can cause conformational changes in DNA via charge and solubility mechanisms which can affect gene expression cell differentiation. Spermine may be linked to the development of cancer.

## Images



ab26975 staining spermine in the Human HeLa cells by ICC/IF (Immunocytochemistry/immunofluorescence). Cells were fixed with 4% formaldehyde for 15 minutes at room temperature (Upper images) or iced methanol of 3 minutes (Lower images) and blocked with 2% BSA for 30 minutes at 27°C. Samples were incubated with primary antibody (1/100) for 1 hour at 27°C. An Alexa Fluor®568-conjugated Donkey anti-rabbit polyclonal (1/1000) was used as the secondary antibody. Samples handled without ab26975 were used as negative controls (Left-hand panels).

**Please note:** All products are "FOR RESEARCH USE ONLY. NOT FOR USE IN DIAGNOSTIC PROCEDURES"

## Our Abpromise to you: Quality guaranteed and expert technical support

- Replacement or refund for products not performing as stated on the datasheet
- Valid for 12 months from date of delivery
- Response to your inquiry within 24 hours

- We provide support in Chinese, English, French, German, Japanese and Spanish
- Extensive multi-media technical resources to help you
- We investigate all quality concerns to ensure our products perform to the highest standards

If the product does not perform as described on this datasheet, we will offer a refund or replacement. For full details of the Abpromise, please visit <https://www.abcam.com/abpromise> or contact our technical team.

#### **Terms and conditions**

---

- Guarantee only valid for products bought direct from Abcam or one of our authorized distributors