



Product datasheet

Anti-SPRY3 antibody ab233424

[1 References](#) [7 Images](#)

Overview

Product name	Anti-SPRY3 antibody
Description	Rabbit polyclonal to SPRY3
Host species	Rabbit
Tested applications	Suitable for: IHC-P, WB
Species reactivity	Reacts with: Mouse, Rat, Human
Immunogen	Recombinant fragment (His-T7-tag) corresponding to Human SPRY3 aa 50 to the C-terminus. N-terminal Tags. (Expressed in E.coli). Database link: O43610
	 Run BLAST with  Run BLAST with
Positive control	WB: Rat brain cerebrum tissue lysate - total protein (ab4033), Human lung lysate; Rat and mouse cerebrum lysate; Recombinant human SPRY3 protein. IHC-P: Human liver cancer, liver and kidney cancer tissue.
General notes	<p>The Life Science industry has been in the grips of a reproducibility crisis for a number of years. Abcam is leading the way in addressing this with our range of recombinant monoclonal antibodies and knockout edited cell lines for gold-standard validation. Please check that this product meets your needs before purchasing.</p> <p>If you have any questions, special requirements or concerns, please send us an inquiry and/or contact our Support team ahead of purchase. Recommended alternatives for this product can be found below, along with publications, customer reviews and Q&As</p>

Properties

Form	Liquid
Storage instructions	Shipped at 4°C. Store at +4°C short term (1-2 weeks). Upon delivery aliquot. Store at +4°C. Avoid freeze / thaw cycle.
Storage buffer	pH: 7.40 Preservative: 0.011% Proclin 300 Constituents: 55.77% Glycerol (glycerin, glycerine), 44.219% PBS
Purity	Protein A purified
Purification notes	Antigen-specific affinity chromatography followed by Protein A affinity chromatography.
Clonality	Polyclonal

Isotype IgG

Applications

The Abpromise guarantee Our **Abpromise guarantee** covers the use of ab233424 in the following tested applications. The application notes include recommended starting dilutions; optimal dilutions/concentrations should be determined by the end user.

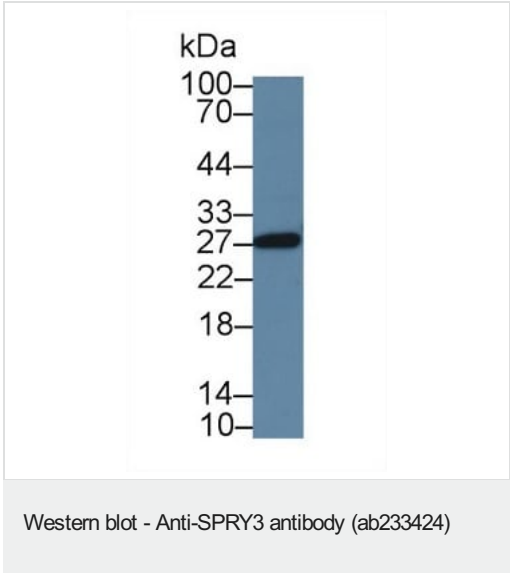
Application	Abreviews	Notes
IHC-P		Use a concentration of 5 - 20 µg/ml.
WB		Use a concentration of 0.5 - 2 µg/ml.

Target

Relevance Sprouty 3 (SPRY3) may function as an antagonist of fibroblast growth factor (FGF) pathways and may negatively modulate respiratory organogenesis.

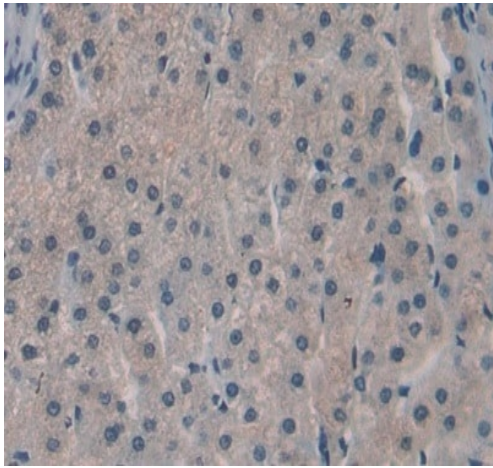
Cellular localization Cytoplasmic. Membrane; Peripheral membrane protein. Note=Found in the cytoplasm in unstimulated cells but is translocated to the membrane ruffles in cells stimulated with EGF (epidermal growth factor).

Images



Anti-SPRY3 antibody (ab233424) at 2 µg/ml + Rat cerebrum lysate

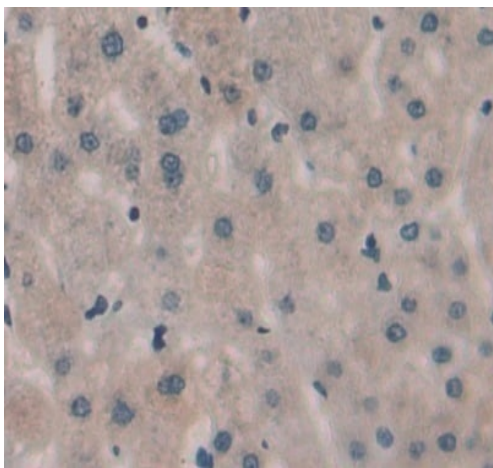
Secondary
HRP-Linked Goat Anti-Rabbit IgG Polyclonal at 0.2 µg/ml



Immunohistochemistry (Formalin/PFA-fixed paraffin-embedded sections) - Anti-SPRY3 antibody (ab233424)

Formalin-fixed, paraffin embedded human liver tissue stained for SPRY3 using ab233424 at 20 µg/ml in immunohistochemical analysis.

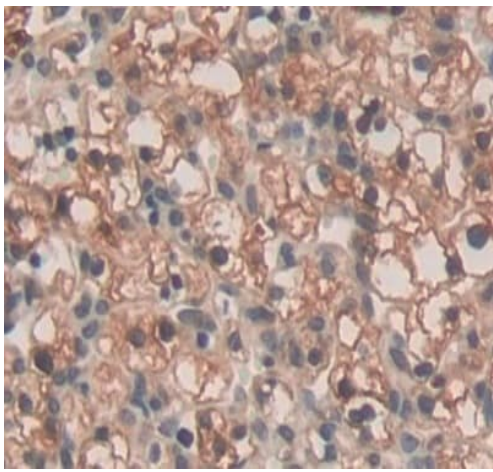
Secondary used: HRP-Linked Goat Anti-Rabbit IgG Polyclonal at 2 µg/ml. DAB staining.



Immunohistochemistry (Formalin/PFA-fixed paraffin-embedded sections) - Anti-SPRY3 antibody (ab233424)

Formalin-fixed, paraffin embedded human liver cancer tissue stained for SPRY3 using ab233424 at 20 µg/ml in immunohistochemical analysis.

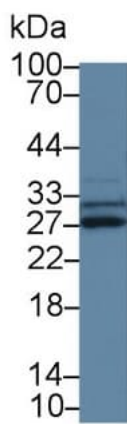
Secondary used: HRP-Linked Goat Anti-Rabbit IgG Polyclonal at 2 µg/ml. DAB staining.



Immunohistochemistry (Formalin/PFA-fixed paraffin-embedded sections) - Anti-SPRY3 antibody (ab233424)

Formalin-fixed, paraffin embedded human renal cancer tissue stained for SPRY3 using ab233424 at 20 µg/ml in immunohistochemical analysis.

Secondary used: HRP-Linked Goat Anti-Rabbit IgG Polyclonal at 2 µg/ml. DAB staining.

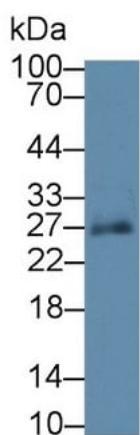


Western blot - Anti-SPRY3 antibody (ab233424)

Anti-SPRY3 antibody (ab233424) at 2 µg/ml + Mouse cerebrum lysate

Secondary

HRP-Linked Goat Anti-Rabbit IgG Polyclonal at 0.2 µg/ml

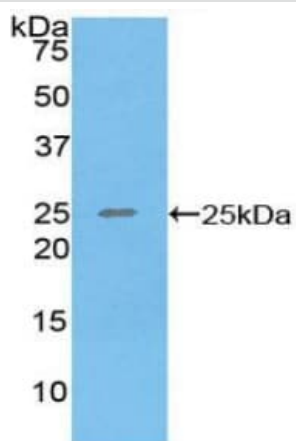


Western blot - Anti-SPRY3 antibody (ab233424)

Anti-SPRY3 antibody (ab233424) at 3 µg/ml + Human lung lysate

Secondary

HRP-Linked Goat Anti-Rabbit IgG Polyclonal at 0.2 µg/ml



Western blot - Anti-SPRY3 antibody (ab233424)

Anti-SPRY3 antibody (ab233424) at 2 µg/ml + Recombinant human SPRY3 protein

Please note: All products are "FOR RESEARCH USE ONLY. NOT FOR USE IN DIAGNOSTIC PROCEDURES"

Our Abpromise to you: Quality guaranteed and expert technical support

- Replacement or refund for products not performing as stated on the datasheet
- Valid for 12 months from date of delivery
- Response to your inquiry within 24 hours

- We provide support in Chinese, English, French, German, Japanese and Spanish
- Extensive multi-media technical resources to help you
- We investigate all quality concerns to ensure our products perform to the highest standards

If the product does not perform as described on this datasheet, we will offer a refund or replacement. For full details of the Abpromise, please visit <https://www.abcam.com/abpromise> or contact our technical team.

Terms and conditions

- Guarantee only valid for products bought direct from Abcam or one of our authorized distributors