


Product datasheet

Anti-SPTBN1 antibody ab72239

★★★★★ [2 Abreviews](#) [10 References](#) [4 Images](#)

Overview

Product name	Anti-SPTBN1 antibody
Description	Rabbit polyclonal to SPTBN1
Host species	Rabbit
Tested applications	Suitable for: WB, IP, IHC-P
Species reactivity	Reacts with: Human Predicted to work with: Horse, Cow, Dog, Chimpanzee, Ferret, Rhesus monkey, Gorilla, Opossum, Orangutan, Elephant 
Immunogen	Synthetic peptide corresponding to Human SPTBN1. Database link: Q01082
Positive control	IHC-P: Human colon carcinoma tissue. WB: HeLa cells. IP: HeLa cells.
General notes	<p>The Life Science industry has been in the grips of a reproducibility crisis for a number of years. Abcam is leading the way in addressing this with our range of recombinant monoclonal antibodies and knockout edited cell lines for gold-standard validation. Please check that this product meets your needs before purchasing.</p> <p>If you have any questions, special requirements or concerns, please send us an inquiry and/or contact our Support team ahead of purchase. Recommended alternatives for this product can be found below, along with publications, customer reviews and Q&As</p>

Properties

Form	Liquid
Storage instructions	Shipped at 4°C. Upon delivery aliquot and store at -20°C. Avoid freeze / thaw cycles.
Storage buffer	pH: 6.8 Preservative: 0.09% Sodium azide Constituents: 0.1% BSA, Tris buffered saline
Purity	Immunogen affinity purified
Clonality	Polyclonal
Isotype	IgG

Applications

The Abpromise guarantee

Our **Abpromise guarantee** covers the use of ab72239 in the following tested applications.

The application notes include recommended starting dilutions; optimal dilutions/concentrations should be determined by the end user.

Application	Abreviews	Notes
WB	★★★★★ (1)	1/2000 - 1/10000. Detects a band of approximately 274 kDa (predicted molecular weight: 274 kDa).
IP		Use at 2-5 µg/mg of lysate.
IHC-P		Use a concentration of 1 µg/ml. Perform heat mediated antigen retrieval with citrate buffer pH 6 before commencing with IHC staining protocol.

Target

Function

Fodrin, which seems to be involved in secretion, interacts with calmodulin in a calcium-dependent manner and is thus candidate for the calcium-dependent movement of the cytoskeleton at the membrane.

Tissue specificity

Isoform 2 is present in brain, lung and kidney (at protein level).

Sequence similarities

Belongs to the spectrin family.
Contains 2 CH (calponin-homology) domains.
Contains 1 PH domain.
Contains 17 spectrin repeats.

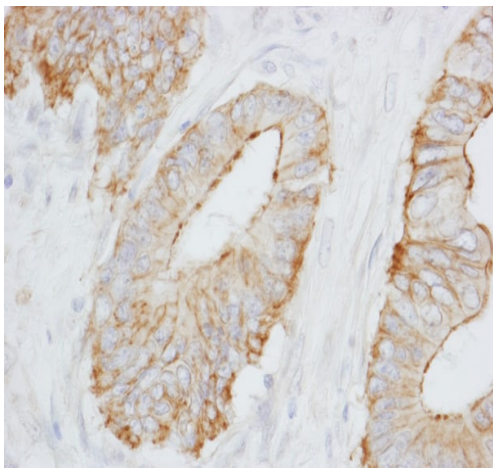
Post-translational modifications

Isoform 2 is phosphorylated on Ser-8 and Ser-10.

Cellular localization

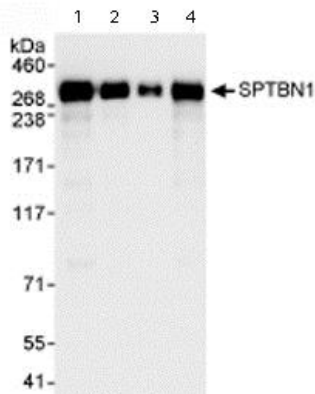
Cell membrane and Cytoplasm > cytoskeleton. Cytoplasm > myofibril > sarcomere > M line.
Colocalizes with ANK2 in a distinct intracellular compartment of neonatal cardiomyocytes.

Images



Immunohistochemistry (Formalin/PFA-fixed paraffin-embedded sections) - Anti-SPTBN1 antibody (ab72239)

Immunohistochemistry (Formalin/PFA-fixed paraffin-embedded sections) analysis of human colon carcinoma tissue labelling SPTBN1 with ab72239 at 1/1000 (0.2µg/ml). Detection: DAB.



Western blot - Anti-SPTBN1 antibody (ab72239)

All lanes : Anti-SPTBN1 antibody (ab72239) at 0.04 µg/ml

Lane 1 : Whole cell lysate from HeLa cells at 50 µg

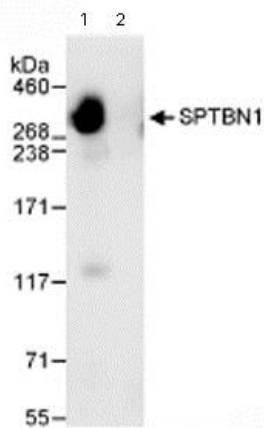
Lane 2 : Whole cell lysate from HeLa cells at 15 µg

Lane 3 : Whole cell lysate from HeLa cells at 5 µg

Lane 4 : Whole cell lysate from 293T cells at 50 µg

Predicted band size: 274 kDa

Observed band size: 274 kDa



Immunoprecipitation - Anti-SPTBN1 antibody (ab72239)

Immunoprecipitation/ Western Blot of SPTBN1.

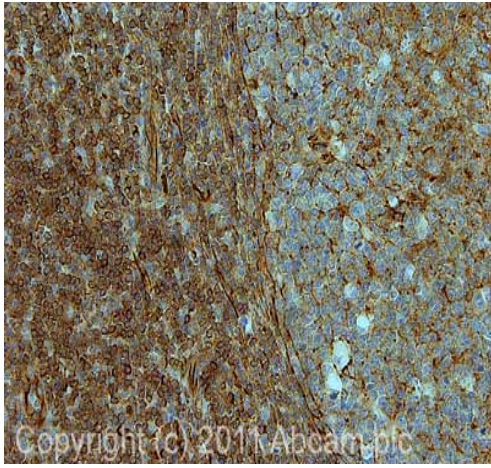
Lane 1: ab72239 at 3µg/mg whole cell lysate.

Lane 2: Control IgG.

ab72239 at 1µg/ml for WB.

Whole cell lysate from HeLa cells at 1mg for IP, 20% of IP loaded.

Chemiluminescence with an exposure time of 1 second.



Immunohistochemistry (Formalin/PFA-fixed paraffin-embedded sections) - Anti-SPTBN1 antibody (ab72239)

IHC image of ab72239 staining in human normal tonsil formalin fixed paraffin embedded tissue section, performed on a Leica Bond™ system using the standard protocol F. The section was pre-treated using heat mediated antigen retrieval with sodium citrate buffer (pH6, epitope retrieval solution 1) for 20 mins. The section was then incubated with ab72239, 1µg/ml, for 15 mins at room temperature and detected using an HRP conjugated compact polymer system. DAB was used as the chromogen. The section was then counterstained with haematoxylin and mounted with DPX.

For other IHC staining systems (automated and non-automated) customers should optimize variable parameters such as antigen retrieval conditions, primary antibody concentration and antibody incubation times.

Please note: All products are "FOR RESEARCH USE ONLY. NOT FOR USE IN DIAGNOSTIC PROCEDURES"

Our Abpromise to you: Quality guaranteed and expert technical support

- Replacement or refund for products not performing as stated on the datasheet
- Valid for 12 months from date of delivery
- Response to your inquiry within 24 hours
- We provide support in Chinese, English, French, German, Japanese and Spanish
- Extensive multi-media technical resources to help you
- We investigate all quality concerns to ensure our products perform to the highest standards

If the product does not perform as described on this datasheet, we will offer a refund or replacement. For full details of the Abpromise, please visit <https://www.abcam.com/abpromise> or contact our technical team.

Terms and conditions

- Guarantee only valid for products bought direct from Abcam or one of our authorized distributors