


Product datasheet

Anti-SR1 antibody ab71983

[5 References](#) [2 Images](#)

Overview

Product name	Anti-SR1 antibody
Description	Rabbit polyclonal to SR1
Host species	Rabbit
Tested applications	Suitable for: WB, IHC-P
Species reactivity	Reacts with: Mouse, Rat, Human Predicted to work with: Chicken 
Immunogen	Synthetic peptide (Human) sequence is amino acids 50-100 in length from Sorcin. (NP_003121).
General notes	<p>The Life Science industry has been in the grips of a reproducibility crisis for a number of years. Abcam is leading the way in addressing this with our range of recombinant monoclonal antibodies and knockout edited cell lines for gold-standard validation. Please check that this product meets your needs before purchasing.</p> <p>If you have any questions, special requirements or concerns, please send us an inquiry and/or contact our Support team ahead of purchase. Recommended alternatives for this product can be found below, along with publications, customer reviews and Q&As</p>

Properties

Form	Liquid
Storage instructions	Shipped at 4°C. Store at +4°C short term (1-2 weeks). Upon delivery aliquot. Store at -20°C or -80°C. Avoid freeze / thaw cycle.
Storage buffer	pH: 7.40 Preservative: 0.05% Sodium azide Constituent: PBS
Purity	Immunogen affinity purified
Clonality	Polyclonal
Isotype	IgG

Applications

The Abpromise guarantee Our **Abpromise guarantee** covers the use of ab71983 in the following tested applications.

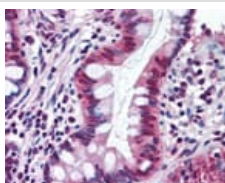
The application notes include recommended starting dilutions; optimal dilutions/concentrations should be determined by the end user.

Application	Abreviews	Notes
WB		Use a concentration of 0.5 - 2 µg/ml. Detects a band of approximately 22 kDa (predicted molecular weight: 22 kDa).
IHC-P		Use at an assay dependent concentration.

Target

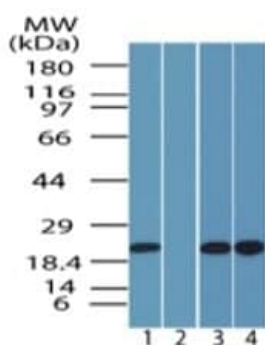
Function	Calcium-binding protein that modulates excitation-contraction coupling in the heart. Contributes to calcium homeostasis in the heart sarcoplasmic reticulum. Modulates the activity of RYR2 calcium channels.
Tissue specificity	Detected in cardiac myocytes.
Sequence similarities	Contains 4 EF-hand domains.
Cellular localization	Cytoplasm. Sarcoplasmic reticulum membrane. Relocates to the sarcoplasmic reticulum membrane in response to elevated calcium levels.

Images



Paraffin embedded human small intestine tissue immunostained using ab71983 at 10 µg/ml.

Immunohistochemistry (Formalin/PFA-fixed paraffin-embedded sections) - Anti-SR1 antibody (ab71983)



All lanes : Anti-SR1 antibody (ab71983) at 1 µg/ml

Lane 1 : human brain lysate

Lane 2 : human brain lysate with immunising peptide

Lane 3 : mouse brain lysate

Lane 4 : rat brain lysate

Predicted band size: 22 kDa

Observed band size: 22 kDa

Western blot - Anti-SR1 antibody (ab71983)

Please note: All products are "FOR RESEARCH USE ONLY. NOT FOR USE IN DIAGNOSTIC PROCEDURES"

Our Abpromise to you: Quality guaranteed and expert technical support

- Replacement or refund for products not performing as stated on the datasheet
- Valid for 12 months from date of delivery
- Response to your inquiry within 24 hours

- We provide support in Chinese, English, French, German, Japanese and Spanish
- Extensive multi-media technical resources to help you
- We investigate all quality concerns to ensure our products perform to the highest standards

If the product does not perform as described on this datasheet, we will offer a refund or replacement. For full details of the Abpromise, please visit <https://www.abcam.com/abpromise> or contact our technical team.

Terms and conditions

- Guarantee only valid for products bought direct from Abcam or one of our authorized distributors