


## Product datasheet

### Anti-SRGAP1 antibody [EPR8760(2)] ab171938

Recombinant RabMAb

6 Images

#### Overview

Product name	Anti-SRGAP1 antibody [EPR8760(2)]
Description	Rabbit monoclonal [EPR8760(2)] to SRGAP1
Host species	Rabbit
Tested applications	<b>Suitable for:</b> Flow Cyt (Intra), WB, IHC-P, ICC/IF <b>Unsuitable for:</b> IP
Species reactivity	<b>Reacts with:</b> Human <b>Predicted to work with:</b> Mouse, Rat 
Immunogen	Synthetic peptide within Human SRGAP1 aa 1050 to the C-terminus (C terminal). The exact sequence is proprietary. Database link: <a href="#">Q7Z6B7</a>
Positive control	Human fetal brain, Human fetal lung, Human fetal kidney tissue lysates, A549 cells, 293T cell line lysate, Human colon tissue, Human lung tissue.
General notes	This product is a recombinant monoclonal antibody, which offers several advantages including: <ul style="list-style-type: none"> <li>- High batch-to-batch consistency and reproducibility</li> <li>- Improved sensitivity and specificity</li> <li>- Long-term security of supply</li> <li>- Animal-free production</li> </ul> For more information <a href="#">see here</a> . Our RabMAb <sup>®</sup> technology is a patented hybridoma-based technology for making rabbit monoclonal antibodies. For details on our patents, please refer to <a href="#">RabMAb<sup>®</sup> patents</a> .

#### Properties

Form	Liquid
Storage instructions	Shipped at 4°C. Store at +4°C short term (1-2 weeks). Upon delivery aliquot. Store at -20°C long term. Avoid freeze / thaw cycle.
Storage buffer	pH: 7.20 Preservative: 0.01% Sodium azide Constituents: 9% PBS, 40% Glycerol (glycerin, glycerine), 0.05% BSA, 50% Tissue culture supernatant

<b>Purity</b>	Tissue culture supernatant
<b>Clonality</b>	Monoclonal
<b>Clone number</b>	EPR8760(2)
<b>Isotype</b>	IgG

## Applications

**The Abpromise guarantee** Our **Abpromise guarantee** covers the use of ab171938 in the following tested applications.

The application notes include recommended starting dilutions; optimal dilutions/concentrations should be determined by the end user.

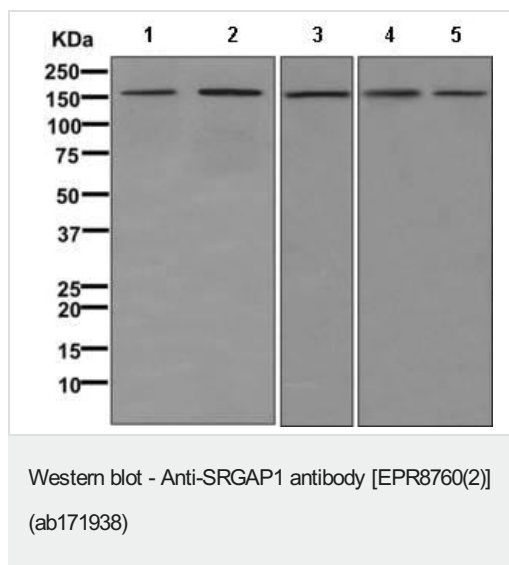
Application	Abreviews	Notes
<b>Flow Cyt (Intra)</b>		1/100 - 1/500. <b>ab172730</b> - Rabbit monoclonal IgG, is suitable for use as an isotype control with this antibody.
<b>WB</b>		1/1000 - 1/5000. Predicted molecular weight: 124 kDa.
<b>IHC-P</b>		1/100 - 1/250. Perform heat mediated antigen retrieval with citrate buffer pH 6 before commencing with IHC staining protocol.
<b>ICC/IF</b>		1/100 - 1/250.

**Application notes** Is unsuitable for IP.

## Target

<b>Function</b>	GTPase-activating protein for RhoA and Cdc42 small GTPases. Together with CDC42 seems to be involved in the pathway mediating the repulsive signaling of Robo and Slit proteins in neuronal migration. SLIT2, probably through interaction with ROBO1, increases the interaction of SRGAP1 with ROBO1 and inactivates CDC42.
<b>Tissue specificity</b>	Expressed in brain, lung, kidney, and testis.
<b>Sequence similarities</b>	Contains 1 FCH domain. Contains 1 Rho-GAP domain. Contains 1 SH3 domain.
<b>Domain</b>	The F-BAR domain mediates oligomerization, binds membranes, and constrains plasma membrane protrusions.

## Images



**All lanes :** Anti-SRGAP1 antibody [EPR8760(2)] (ab171938) at 1/1000 dilution

**Lane 1 :** Human fetal brain tissue lysate

**Lane 2 :** 293T cell lysate

**Lane 3 :** A549 cell lysate

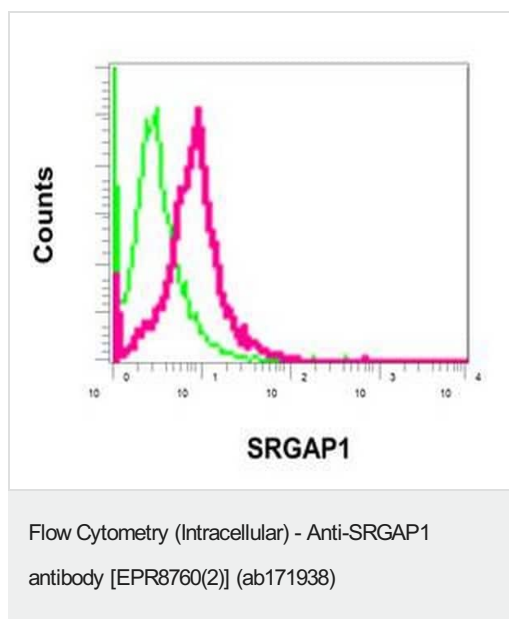
**Lane 4 :** Human fetal lung tissue lysate

**Lane 5 :** Human fetal kidney tissue lysate

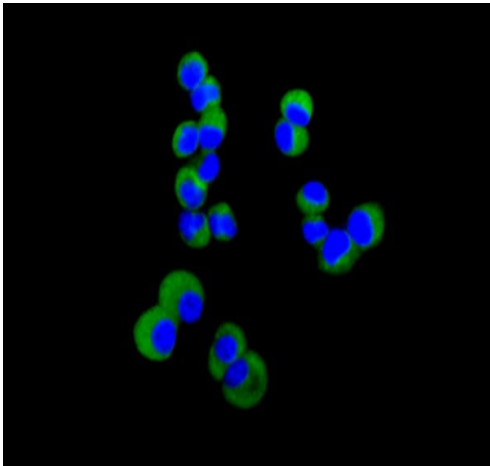
Lysates/proteins at 10 µg per lane.

Developed using the ECL technique.

**Predicted band size:** 124 kDa

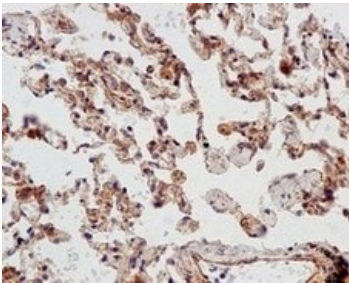


Intracellular flow cytometric analysis of permeabilized 293T cells labeling SRGAP1 with ab171938 at 1/100 (red) or a rabbit IgG (negative) (green).



Immunocytochemistry/ Immunofluorescence - Anti-SRGAP1 antibody [EPR8760(2)] (ab171938)

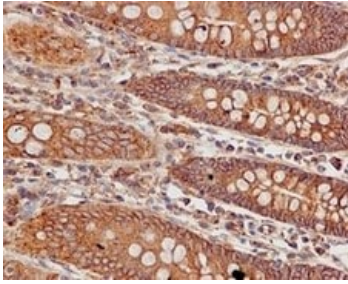
Immunofluorescent analysis of A549 cells labeling SRGAP1 with ab171938 at 1/100 (green). DAPI nuclear staining (blue).



Immunohistochemistry (Formalin/PFA-fixed paraffin-embedded sections) - Anti-SRGAP1 antibody [EPR8760(2)] (ab171938)

Immunohistochemical analysis of paraffin embedded Human lung tissue labeling SRGAP1 with ab171938 at 1/100 dilution.

Perform heat mediated antigen retrieval with citrate buffer pH 6 before commencing with IHC staining protocol.



Immunohistochemical analysis of paraffin embedded Human colon tissue labeling SRGAP1 with ab171938 at 1/100 dilution.

Perform heat mediated antigen retrieval with citrate buffer pH 6 before commencing with IHC staining protocol.

Immunohistochemistry (Formalin/PFA-fixed paraffin-embedded sections) - Anti-SRGAP1 antibody [EPR8760(2)] (ab171938)

Why choose a recombinant antibody?



**Research with confidence**  
Consistent and reproducible results



**Long-term and scalable supply**  
Recombinant technology



**Success from the first experiment**  
Confirmed specificity



**Ethical standards compliant**  
Animal-free production

Anti-SRGAP1 antibody [EPR8760(2)] (ab171938)

**Please note:** All products are "FOR RESEARCH USE ONLY. NOT FOR USE IN DIAGNOSTIC PROCEDURES"

### Our Abpromise to you: Quality guaranteed and expert technical support

- Replacement or refund for products not performing as stated on the datasheet
- Valid for 12 months from date of delivery
- Response to your inquiry within 24 hours
- We provide support in Chinese, English, French, German, Japanese and Spanish
- Extensive multi-media technical resources to help you
- We investigate all quality concerns to ensure our products perform to the highest standards

If the product does not perform as described on this datasheet, we will offer a refund or replacement. For full details of the Abpromise, please visit <https://www.abcam.com/abpromise> or contact our technical team.

### Terms and conditions

- Guarantee only valid for products bought direct from Abcam or one of our authorized distributors