


## Product datasheet

# Anti-SRP68 antibody ab157120

3 Images

### Overview

---

<b>Product name</b>	Anti-SRP68 antibody
<b>Description</b>	Rabbit polyclonal to SRP68
<b>Host species</b>	Rabbit
<b>Tested applications</b>	<b>Suitable for:</b> WB, IP
<b>Species reactivity</b>	<b>Reacts with:</b> Mouse, Human <b>Predicted to work with:</b> Rabbit, Horse, Guinea pig, Cow, Dog, Pig, Chimpanzee, Ferret, Rhesus monkey, Gorilla, Opossum, Common marmoset 
<b>Immunogen</b>	Synthetic peptide, corresponding to a region within the N terminal amino acids 1-50 of Human SRP68 (NP_055045.2). <a href="#">Run BLAST with Expasy</a> <a href="#">Run BLAST with NCBI</a>
<b>Positive control</b>	HeLa, 293T, TCMK 1, Renca, NIH 3T3, and Jurkat whole cell lysates.
<b>General notes</b>	<p>The Life Science industry has been in the grips of a reproducibility crisis for a number of years. Abcam is leading the way in addressing this with our range of recombinant monoclonal antibodies and knockout edited cell lines for gold-standard validation. Please check that this product meets your needs before purchasing.</p> <p>If you have any questions, special requirements or concerns, please send us an inquiry and/or contact our Support team ahead of purchase. Recommended alternatives for this product can be found below, along with publications, customer reviews and Q&amp;As</p>

### Properties

---

<b>Form</b>	Liquid
<b>Storage instructions</b>	Shipped at 4°C. Store at +4°C.
<b>Storage buffer</b>	pH: 7 Preservative: 0.09% Sodium azide Constituent: 99% Tris citrate/phosphate  pH 7 to 8
<b>Purity</b>	Immunogen affinity purified
<b>Purification notes</b>	ab157120 was affinity purified using an epitope specific to SRP68 immobilized on solid support.
<b>Clonality</b>	Polyclonal

Isotype

IgG

## Applications

### The Abpromise guarantee

Our **Abpromise guarantee** covers the use of ab157120 in the following tested applications.

The application notes include recommended starting dilutions; optimal dilutions/concentrations should be determined by the end user.

Application	Abreviews	Notes
WB		1/2000 - 1/10000. Predicted molecular weight: 70 kDa.
IP		Use at 2-10 µg/mg of lysate.

## Target

### Function

Signal-recognition-particle assembly has a crucial role in targeting secretory proteins to the rough endoplasmic reticulum membrane. SRP68 binds the 7S RNA, SRP72 binds to this complex subsequently. This ribonucleoprotein complex might interact directly with the docking protein in the ER membrane and possibly participate in the elongation arrest function.

### Sequence similarities

Belongs to the SRP68 family.

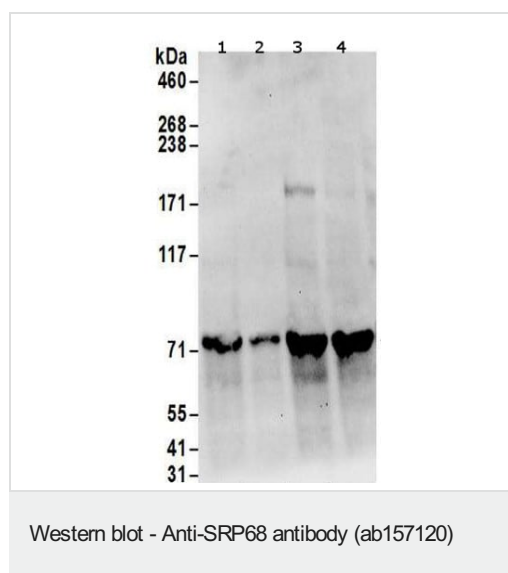
### Domain

The RNA-binding domain is located near the N-terminus.

### Cellular localization

Cytoplasm. Nucleus > nucleolus.

## Images



**All lanes :** Anti-SRP68 antibody (ab157120) at 0.1 µg/ml

**Lane 1 :** HeLa whole cell lysate at 50 µg

**Lane 2 :** HeLa whole cell lysate at 15 µg

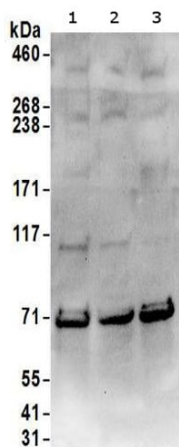
**Lane 3 :** 293T whole cell lysate at 50 µg

**Lane 4 :** Jurkat whole cell lysate at 50 µg

Developed using the ECL technique.

**Predicted band size:** 70 kDa

**Exposure time:** 30 seconds



Western blot - Anti-SRP68 antibody (ab157120)

**All lanes :** Anti-SRP68 antibody (ab157120) at 0.1 µg/ml

**Lane 1 :** TCMK 1 whole cell lysate

**Lane 2 :** Renca whole cell lysate

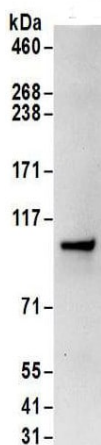
**Lane 3 :** NIH 3T3 whole cell lysate

Lysates/proteins at 50 µg per lane.

Developed using the ECL technique.

**Predicted band size:** 70 kDa

**Exposure time:** 30 seconds



Immunoprecipitation - Anti-SRP68 antibody (ab157120)

Detection of SRP68 by Western Blot of Immunoprecipitate.

ab157120 at 0.4µg/ml labeling SRP68 in HeLa whole cell lysate immunoprecipitated using ab157120 at 6µg/mg lysate (1 mg/IP; 20% of IP loaded/lane).

Detection: Chemiluminescence with exposure time of 10 seconds.

**Please note:** All products are "FOR RESEARCH USE ONLY. NOT FOR USE IN DIAGNOSTIC PROCEDURES"

### Our Abpromise to you: Quality guaranteed and expert technical support

- Replacement or refund for products not performing as stated on the datasheet
- Valid for 12 months from date of delivery
- Response to your inquiry within 24 hours
- We provide support in Chinese, English, French, German, Japanese and Spanish
- Extensive multi-media technical resources to help you

- We investigate all quality concerns to ensure our products perform to the highest standards

If the product does not perform as described on this datasheet, we will offer a refund or replacement. For full details of the Abpromise, please visit <https://www.abcam.com/abpromise> or contact our technical team.

### **Terms and conditions**

---

- Guarantee only valid for products bought direct from Abcam or one of our authorized distributors