

## Product datasheet

### Anti-SSB antibody [EPR6570] $\alpha$ b124932

Recombinant RabMAb

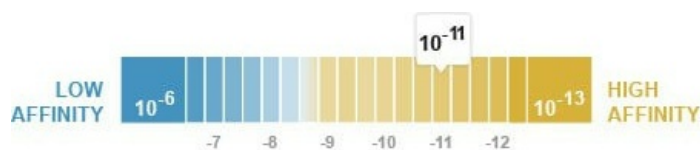
[1 References](#) [5 Images](#)

#### Overview

Product name	Anti-SSB antibody [EPR6570]
Description	Rabbit monoclonal [EPR6570] to SSB
Host species	Rabbit
Tested applications	<b>Suitable for:</b> WB, IHC-P <b>Unsuitable for:</b> Flow Cyt
Species reactivity	<b>Reacts with:</b> Mouse, Rat, Human
Immunogen	Synthetic peptide within Human SSB aa 100-200. The exact sequence is proprietary.
Positive control	Jurkat, K562, HeLa, Ramos, C6, PC12, NIH 3T3 and RAW 264.7 cell lysates; Human colon tissue; Human thyroid adenocarcinoma tissue
General notes	<p>This product is a recombinant monoclonal antibody, which offers several advantages including:</p> <ul style="list-style-type: none"> <li>- High batch-to-batch consistency and reproducibility</li> <li>- Improved sensitivity and specificity</li> <li>- Long-term security of supply</li> <li>- Animal-free production</li> </ul> <p>For more information <a href="#">see here</a>.</p> <p>Our RabMAb<sup>®</sup> technology is a patented hybridoma-based technology for making rabbit monoclonal antibodies. For details on our patents, please refer to <a href="#">RabMAb<sup>®</sup> patents</a>.</p>

#### Properties

Form	Liquid
Storage instructions	Shipped at 4°C. Store at -20°C. Stable for 12 months at -20°C.
Dissociation constant ( $K_D$ )	$K_D = 4.80 \times 10^{-11}$ M



[Learn more about  \$K\_D\$](#)

Storage buffer	pH: 7.20 Preservative: 0.05% Sodium azide
----------------	--

	Constituents: 40% Glycerol (glycerin, glycerine), 9.85% Tris glycine, 50% Tissue culture supernatant
<b>Purity</b>	Tissue culture supernatant
<b>Clonality</b>	Monoclonal
<b>Clone number</b>	EPR6570
<b>Isotype</b>	IgG

## Applications

**The Abpromise guarantee** Our **Abpromise guarantee** covers the use of ab124932 in the following tested applications. The application notes include recommended starting dilutions; optimal dilutions/concentrations should be determined by the end user.

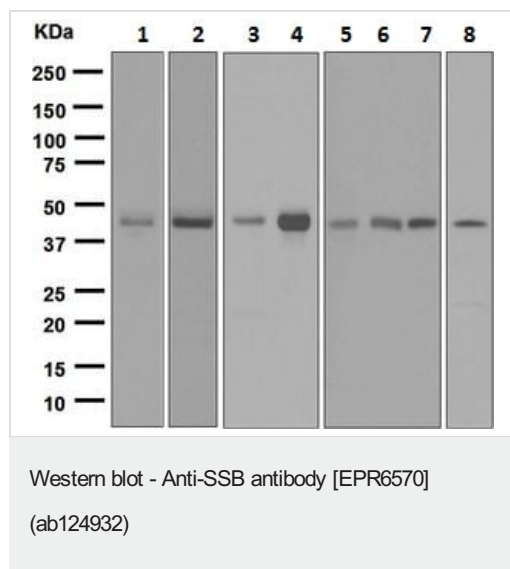
Application	Abreviews	Notes
<b>WB</b>		1/10000 - 1/50000. Detects a band of approximately 47 kDa (predicted molecular weight: 46 kDa).
<b>IHC-P</b>		1/250 - 1/500. Perform heat mediated antigen retrieval with citrate buffer pH 6 before commencing with IHC staining protocol.

**Application notes** Is unsuitable for Flow Cyt.

## Target

<b>Function</b>	Binds to the 3' poly(U) terminii of nascent RNA polymerase III transcripts, protecting them from exonuclease digestion and facilitating their folding and maturation.
<b>Sequence similarities</b>	Contains 1 HTH La-type RNA-binding domain. Contains 1 RRM (RNA recognition motif) domain.
<b>Post-translational modifications</b>	Phosphorylated. The phosphorylation sites are at the C-terminal part of the protein. The N-terminus is blocked.
<b>Cellular localization</b>	Nucleus.

## Images



**All lanes** : Anti-SSB antibody [EPR6570] (ab124932) at 1/10000 dilution

**Lane 1** : Jurkat cell lysate

**Lane 2** : K562 cell lysate

**Lane 3** : HeLa cell lysate

**Lane 4** : Ramos cell lysate

**Lane 5** : C6 cell lysate

**Lane 6** : PC12 cell lysate

**Lane 7** : NIH 3T3 cell lysate

**Lane 8** : RAW 264.7 cell lysate

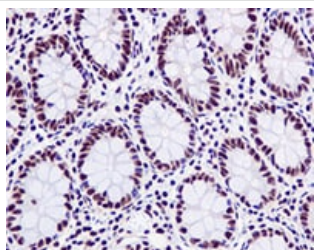
Lysates/proteins at 10 µg per lane.

### Secondary

**All lanes** : HRP labelled Goat anti Rabbit at 1/2000 dilution

**Predicted band size:** 46 kDa

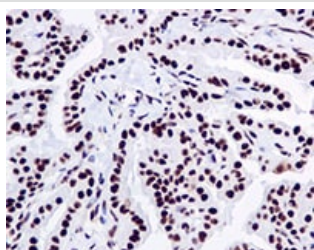
**Observed band size:** 47 kDa



Immunohistochemistry (Formalin/PFA-fixed paraffin-embedded sections) - Anti-SSB antibody [EPR6570]  
(ab124932)

Formalin-fixed, paraffin-embedded human colon tissue stained for SSB with ab124932 (1/250 dilution) in immunohistochemical analysis.

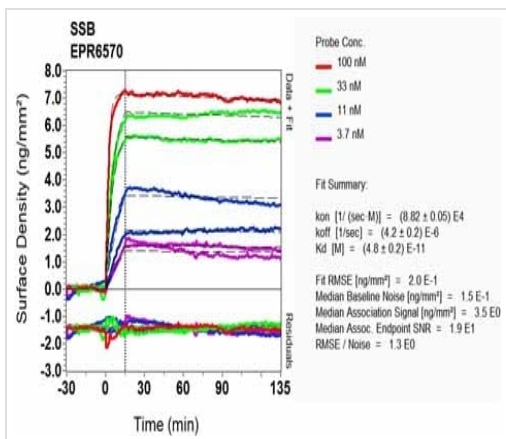
Perform heat mediated antigen retrieval with citrate buffer pH 6 before commencing with IHC staining protocol.



Immunohistochemistry (Formalin/PFA-fixed paraffin-embedded sections) - Anti-SSB antibody [EPR6570]  
(ab124932)

Formalin-fixed, paraffin-embedded human thyroid adenocarcinoma tissue stained for SSB with ab124932 (1/250 dilution) in immunohistochemical analysis.

Perform heat mediated antigen retrieval with citrate buffer pH 6 before commencing with IHC staining protocol.



SPR Scanning - Anti-SSB antibody [EPR6570]  
(ab124932)

Equilibrium dissociation constant ( $K_D$ )

Learn more about  $K_D$

[Click here to learn more about  \$K\_D\$](#)

Why choose a recombinant antibody?

**Research with confidence**  
Consistent and reproducible results

**Long-term and scalable supply**  
Recombinant technology

**Success from the first experiment**  
Confirmed specificity

**Ethical standards compliant**  
Animal-free production

Anti-SSB antibody [EPR6570] (ab124932)

**Please note:** All products are "FOR RESEARCH USE ONLY. NOT FOR USE IN DIAGNOSTIC PROCEDURES"

### Our Abpromise to you: Quality guaranteed and expert technical support

- Replacement or refund for products not performing as stated on the datasheet
- Valid for 12 months from date of delivery
- Response to your inquiry within 24 hours
- We provide support in Chinese, English, French, German, Japanese and Spanish
- Extensive multi-media technical resources to help you
- We investigate all quality concerns to ensure our products perform to the highest standards

If the product does not perform as described on this datasheet, we will offer a refund or replacement. For full details of the Abpromise, please visit <https://www.abcam.com/abpromise> or contact our technical team.

## Terms and conditions

---

- Guarantee only valid for products bought direct from Abcam or one of our authorized distributors