



Anti-ST2 antibody ab233433

[2 References](#) [7 Images](#)

Overview

Product name	Anti-ST2 antibody
Description	Rabbit polyclonal to ST2
Host species	Rabbit
Tested applications	Suitable for: WB, IHC-P, ICC/IF
Species reactivity	Reacts with: Human, Recombinant fragment
Immunogen	Recombinant fragment (His-tag) corresponding to Human ST2 aa 150-350. (Expressed in E.coli). Database link: Q01638
	 Run BLAST with  Run BLAST with
Positive control	WB: K562, A549 and HEK-293T cell lysates; Human lung lysate; Recombinant human ST2 protein. ICC/IF: A549 cells. IHC-P: Human kidney tissue.
General notes	<p>The Life Science industry has been in the grips of a reproducibility crisis for a number of years. Abcam is leading the way in addressing this with our range of recombinant monoclonal antibodies and knockout edited cell lines for gold-standard validation. Please check that this product meets your needs before purchasing.</p> <p>If you have any questions, special requirements or concerns, please send us an inquiry and/or contact our Support team ahead of purchase. Recommended alternatives for this product can be found below, along with publications, customer reviews and Q&As</p>

Properties

Form	Liquid
Storage instructions	Shipped at 4°C. Store at +4°C short term (1-2 weeks). Upon delivery aliquot. Store at -20°C long term. Avoid freeze / thaw cycle.
Storage buffer	pH: 7.40 Preservative: 0.02% Sodium azide Constituents: 44.12% PBS, 55.77% Glycerol (glycerin, glycerine)
Purity	Immunogen affinity purified
Purification notes	Antigen-specific affinity chromatography followed by Protein A affinity chromatography.
Clonality	Polyclonal
Isotype	IgG

Applications

The Abpromise guarantee

Our **Abpromise guarantee** covers the use of ab233433 in the following tested applications.

The application notes include recommended starting dilutions; optimal dilutions/concentrations should be determined by the end user.

Application	Abreviews	Notes
WB		Use a concentration of 0.2 - 2 µg/ml. Predicted molecular weight: 63 kDa.
IHC-P		Use a concentration of 5 - 20 µg/ml.
ICC/IF		Use a concentration of 5 - 20 µg/ml.

Target

Function

Receptor for interleukin-33 (IL-33), its stimulation recruits MYD88, IRAK1, IRAK4, and TRAF6, followed by phosphorylation of MAPK3/ERK1 and/or MAPK1/ERK2, MAPK14, and MAPK8. Possibly involved in helper T-cell function.

Tissue specificity

Highly expressed in kidney, lung, placenta, stomach, skeletal muscle, colon and small intestine. Isoform A is prevalently expressed in the lung, testis, placenta, stomach and colon. Isoform B is more abundant in the brain, kidney and the liver. Isoform C is not detected in brain, heart, liver, kidney and skeletal muscle.

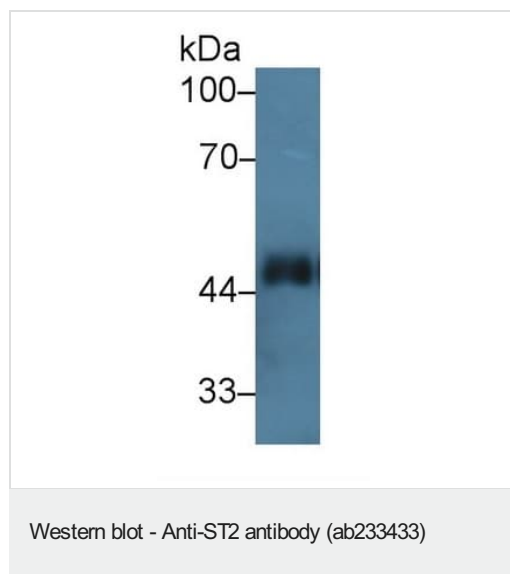
Sequence similarities

Belongs to the interleukin-1 receptor family.
Contains 3 Ig-like C2-type (immunoglobulin-like) domains.
Contains 1 TIR domain.

Cellular localization

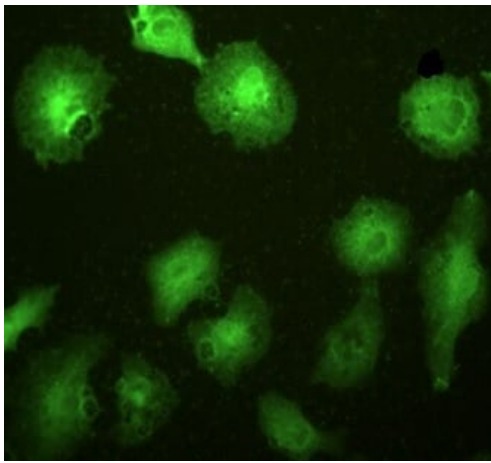
Secreted and Cell membrane.

Images



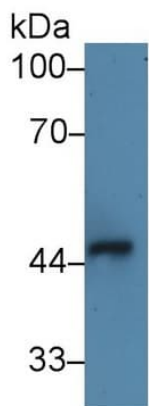
Anti-ST2 antibody (ab233433) at 2 µg/ml + Human lung lysate

Predicted band size: 63 kDa



Immunocytochemistry/ Immunofluorescence - Anti-ST2 antibody (ab233433)

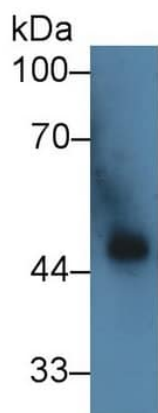
A549 (human lung carcinoma cell line) cells stained for ST2 using ab233433 at 20 µg/mL in ICC/IF. FITC-labeled secondary antibody.



Western blot - Anti-ST2 antibody (ab233433)

Anti-ST2 antibody (ab233433) at 2 µg/ml + HEK-293T (Human epithelial cell line from embryonic kidney transformed with large T antigen) cell lysate

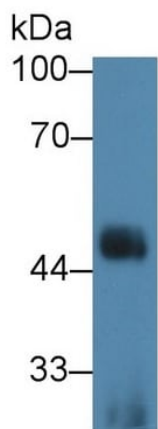
Predicted band size: 63 kDa



Western blot - Anti-ST2 antibody (ab233433)

Anti-ST2 antibody (ab233433) at 2 µg/ml + A549 (human lung carcinoma cell line) cell lysate

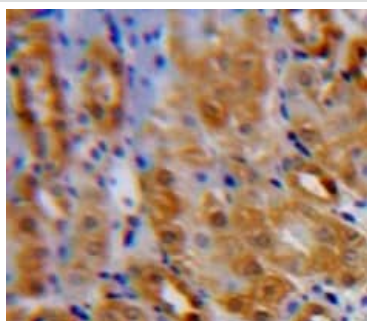
Predicted band size: 63 kDa



Western blot - Anti-ST2 antibody (ab233433)

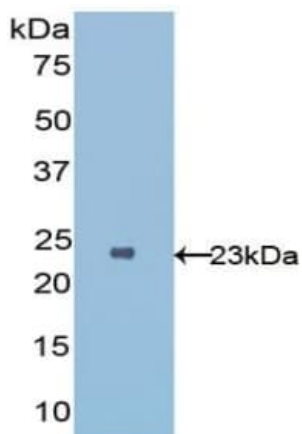
Anti-ST2 antibody (ab233433) at 2 µg/ml + K562 (human chronic myelogenous leukemia cell line from bone marrow) cell lysate

Predicted band size: 63 kDa



Immunohistochemistry (Formalin/PFA-fixed paraffin-embedded sections) - Anti-ST2 antibody (ab233433)

Formalin-fixed, paraffin-embedded human kidney tissue stained for ST2 using ab233433 at 20 µg/mL in immunohistochemical analysis. DAB staining.



Western blot - Anti-ST2 antibody (ab233433)

Anti-ST2 antibody (ab233433) at 2 µg/ml + Recombinant human ST2 protein

Predicted band size: 63 kDa

Please note: All products are "FOR RESEARCH USE ONLY. NOT FOR USE IN DIAGNOSTIC PROCEDURES"

Our Abpromise to you: Quality guaranteed and expert technical support

- Replacement or refund for products not performing as stated on the datasheet
- Valid for 12 months from date of delivery
- Response to your inquiry within 24 hours
- We provide support in Chinese, English, French, German, Japanese and Spanish
- Extensive multi-media technical resources to help you
- We investigate all quality concerns to ensure our products perform to the highest standards

If the product does not perform as described on this datasheet, we will offer a refund or replacement. For full details of the Abpromise, please visit <https://www.abcam.com/abpromise> or contact our technical team.

Terms and conditions

- Guarantee only valid for products bought direct from Abcam or one of our authorized distributors