




Product datasheet

Anti-ST6GAL2 antibody ab214920

1 Image

Overview

Product name	Anti-ST6GAL2 antibody
Description	Sheep polyclonal to ST6GAL2
Host species	Sheep
Tested applications	Suitable for: WB
Species reactivity	Reacts with: Human Predicted to work with: Mouse, Rat, Cow, Chimpanzee 
Immunogen	Recombinant fragment corresponding to Human ST6GAL2 aa 200 to the C-terminus. Chinese hamster ovary cell line (CHO) derived Database link: Q96JF0  Run BLAST with  Run BLAST with
Positive control	WB - Human brain tissue lysate
General notes	<p>The Life Science industry has been in the grips of a reproducibility crisis for a number of years. Abcam is leading the way in addressing this with our range of recombinant monoclonal antibodies and knockout edited cell lines for gold-standard validation. Please check that this product meets your needs before purchasing.</p> <p>If you have any questions, special requirements or concerns, please send us an inquiry and/or contact our Support team ahead of purchase. Recommended alternatives for this product can be found below, along with publications, customer reviews and Q&As</p>

Properties

Form	Lyophilized: Reconstitute the antibody with 100uL sterile PBS and the final concentration is 500 ug/mL. Reconstituted antibody can also be aliquoted and stored frozen at < -20 °C for at least for six months without detectable loss of activity.
Storage instructions	Shipped at 4°C. Store at +4°C short term (1-2 weeks). Upon delivery aliquot. Store at -20°C long term. Avoid freeze / thaw cycle.
Storage buffer	Constituent: 100% PBS
Purity	Immunogen affinity purified
Purification notes	The IgG fraction of immunized serum was purified by antigen affinity chromatography and lyophilized from a 0.2 µm filtered solution in phosphate-buffered saline (PBS).
Clonality	Polyclonal

Isotype

IgG

Applications

The Abpromise guarantee

Our **Abpromise guarantee** covers the use of ab214920 in the following tested applications.

The application notes include recommended starting dilutions; optimal dilutions/concentrations should be determined by the end user.

Application	Abreviews	Notes
WB		1/1000 - 1/2000. Predicted molecular weight: 60 kDa.

Target

Function

Transfers sialic acid from the donor of substrate CMP-sialic acid to galactose containing acceptor substrates. Has alpha-2,6-sialyltransferase activity toward oligosaccharides that have the Gal-beta-1,4-GlcNAc sequence at the non-reducing end of their carbohydrate groups, but it has weak or no activities toward glycoproteins and glycolipids.

Tissue specificity

Weakly expressed in some tissues, such as small intestine, colon and fetal brain.

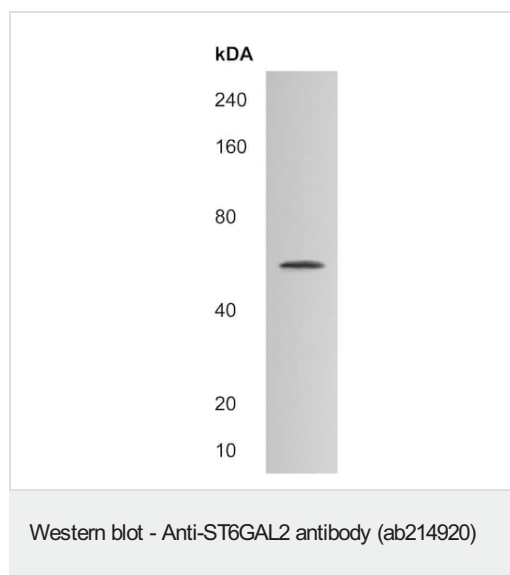
Sequence similarities

Belongs to the glycosyltransferase 29 family.

Cellular localization

Golgi apparatus > Golgi stack membrane.

Images



Anti-ST6GAL2 antibody (ab214920) at 1/1000 dilution + Human brain tissue lysate

Predicted band size: 60 kDa

Please note: All products are "FOR RESEARCH USE ONLY. NOT FOR USE IN DIAGNOSTIC PROCEDURES"

Our Abpromise to you: Quality guaranteed and expert technical support

- Replacement or refund for products not performing as stated on the datasheet

- Valid for 12 months from date of delivery
- Response to your inquiry within 24 hours
- We provide support in Chinese, English, French, German, Japanese and Spanish
- Extensive multi-media technical resources to help you
- We investigate all quality concerns to ensure our products perform to the highest standards

If the product does not perform as described on this datasheet, we will offer a refund or replacement. For full details of the Abpromise, please visit <https://www.abcam.com/abpromise> or contact our technical team.

Terms and conditions

- Guarantee only valid for products bought direct from Abcam or one of our authorized distributors