




Product datasheet

Anti-STAM2 antibody ab206696

[2 Images](#)

Overview

Product name	Anti-STAM2 antibody
Description	Rabbit polyclonal to STAM2
Host species	Rabbit
Tested applications	Suitable for: WB, IP
Species reactivity	Reacts with: Human Predicted to work with: Sheep, Rabbit, Horse, Cow, Cat, Pig, Chimpanzee, Rhesus monkey, Gorilla, Orangutan 
Immunogen	Synthetic peptide within Human STAM2 aa 150-250. The exact immunogen sequence used to generate this antibody is proprietary information. If additional detail on the immunogen is needed to determine the suitability of the antibody for your needs, please contact our Scientific Support team to discuss your requirements. Database link: O75886  Run BLAST with  Run BLAST with
Positive control	HeLa, Jurkat and 293T whole cell lysates.
General notes	<p>The Life Science industry has been in the grips of a reproducibility crisis for a number of years. Abcam is leading the way in addressing this with our range of recombinant monoclonal antibodies and knockout edited cell lines for gold-standard validation. Please check that this product meets your needs before purchasing.</p> <p>If you have any questions, special requirements or concerns, please send us an inquiry and/or contact our Support team ahead of purchase. Recommended alternatives for this product can be found below, along with publications, customer reviews and Q&As</p>

Properties

Form	Liquid
Storage instructions	Shipped at 4°C. Store at +4°C short term (1-2 weeks). Upon delivery aliquot. Store at -20°C long term. Avoid freeze / thaw cycle.
Storage buffer	pH: 7 Preservative: 0.09% Sodium azide Constituent: 99% Tris citrate/phosphate pH: 7 to 8

Purity	Immunogen affinity purified
Clonality	Polyclonal
Isotype	IgG

Applications

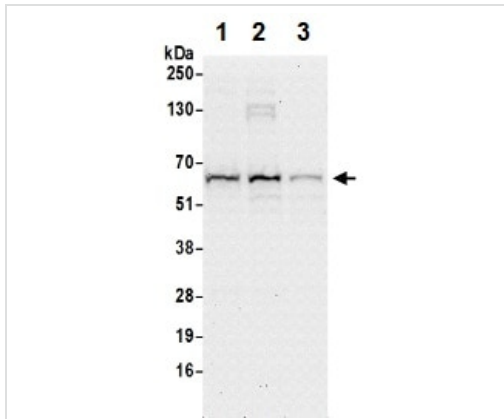
The Abpromise guarantee Our **Abpromise guarantee** covers the use of ab206696 in the following tested applications. The application notes include recommended starting dilutions; optimal dilutions/concentrations should be determined by the end user.

Application	Abreviews	Notes
WB		1/2000 - 1/10000.
IP		Use at 2-10 µg/mg of lysate.

Target

Function	Involved in intracellular signal transduction mediated by cytokines and growth factors. Upon IL-2 and GM-CSF stimulation, it plays a role in signaling leading to DNA synthesis and MYC induction. May also play a role in T-cell development. Involved in down-regulation of receptor tyrosine kinase via multivesicular body (MVBs) when complexed with HGS (ESCRT-0 complex). The ESCRT-0 complex binds ubiquitin and acts as sorting machinery that recognizes ubiquitinated receptors and transfers them to further sequential lysosomal sorting/trafficking processes.
Tissue specificity	Ubiquitously expressed.
Sequence similarities	Belongs to the STAM family. Contains 1 ITAM domain. Contains 1 SH3 domain. Contains 1 UIM (ubiquitin-interacting motif) repeat. Contains 1 VHS domain.
Domain	The VHS and UIM domains mediate the interaction with ubiquitinated proteins. The SH3 domain mediates the interaction with USP8. Contains one Pro-Xaa-Val-Xaa-Leu (PxVxL) motif, which is required for interaction with chromoshadow domains. This motif requires additional residues -7, -6, +4 and +5 of the central Val which contact the chromoshadow domain.
Post-translational modifications	Phosphorylated in response to IL-2, GM-CSF, EGF and PDGF.
Cellular localization	Cytoplasm. Early endosome membrane.

Images



Western blot - Anti-STAM2 antibody (ab206696)

All lanes : Anti-STAM2 antibody (ab206696) at 0.1 µg/ml

Lane 1 : HeLa whole cell lysate in NETN lysis buffer

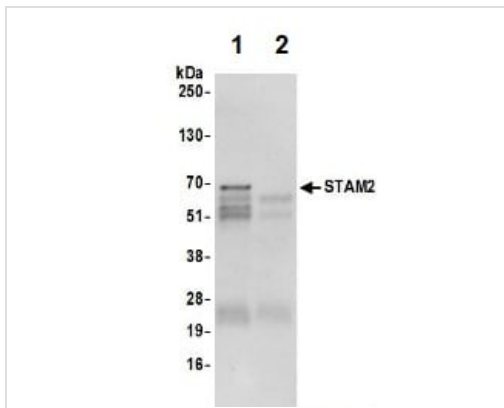
Lane 2 : 293T whole cell lysate in NETN lysis buffer

Lane 3 : Jurkat whole cell lysate in NETN lysis buffer

Lysates/proteins at 50 µg per lane.

Developed using the ECL technique.

Exposure time: 30 seconds



Immunoprecipitation - Anti-STAM2 antibody (ab206696)

Immunoprecipitation analysis of Jurkat cell lysate (in NETN buffer, 0.5 or 1.0 mg per IP reaction; 20% of IP loaded) labeling STAM2 using ab206696 at 6 µg per reaction (lane 1). A Control IgG was used in lane 2. For blotting immunoprecipitated STAM2, ab206696 was used at 0.4 µg/mL. Detection: Chemiluminescence with an exposure time of 10 seconds.

Please note: All products are "FOR RESEARCH USE ONLY. NOT FOR USE IN DIAGNOSTIC PROCEDURES"

Our Abpromise to you: Quality guaranteed and expert technical support

- Replacement or refund for products not performing as stated on the datasheet
- Valid for 12 months from date of delivery
- Response to your inquiry within 24 hours
- We provide support in Chinese, English, French, German, Japanese and Spanish
- Extensive multi-media technical resources to help you
- We investigate all quality concerns to ensure our products perform to the highest standards

If the product does not perform as described on this datasheet, we will offer a refund or replacement. For full details of the Abpromise, please visit <https://www.abcam.com/abpromise> or contact our technical team.

Terms and conditions

- Guarantee only valid for products bought direct from Abcam or one of our authorized distributors