

Product datasheet

Anti-STAT5α (phospho S725) + STAT5b (phospho S730) antibody ab194518

[1 References](#) [1 Image](#)

Overview

Product name	Anti-STAT5a (phospho S725) + STAT5b (phospho S730) antibody
Description	Rabbit polyclonal to STAT5a (phospho S725) + STAT5b (phospho S730)
Host species	Rabbit
Specificity	ab194518 detects endogenous levels of STAT5a + STAT5b only when phosphorylated at serine 725 / serine 730.
Tested applications	Suitable for: WB
Species reactivity	Reacts with: Human
Immunogen	<p>This product was produced with the following immunogens:</p> <p>Synthetic peptide corresponding to Human STAT5a (phospho S725) conjugated to keyhole limpet haemocyanin. (A-P-S(p)-P-V) Database link: P42230</p> <p>Synthetic peptide corresponding to Human STAT5b (phospho S730) conjugated to keyhole limpet haemocyanin. (A-P-S(p)-P-V) Database link: P42232</p>
Positive control	EGF treated Jurkat cell extracts.
General notes	<p>The Life Science industry has been in the grips of a reproducibility crisis for a number of years. Abcam is leading the way in addressing this with our range of recombinant monoclonal antibodies and knockout edited cell lines for gold-standard validation. Please check that this product meets your needs before purchasing.</p> <p>If you have any questions, special requirements or concerns, please send us an inquiry and/or contact our Support team ahead of purchase. Recommended alternatives for this product can be found below, along with publications, customer reviews and Q&As</p>

Properties

Form	Liquid
Storage instructions	Shipped at 4°C. Store at +4°C short term (1-2 weeks). Upon delivery aliquot. Store at -20°C long term. Avoid freeze / thaw cycle.
Storage buffer	pH: 7.40

Preservative: 0.02% Sodium azide
Constituents: 49% PBS, 50% Glycerol, 0.87% Sodium chloride

PBS without Mg^{2+} and Ca^{2+} .

Purity	Immunogen affinity purified
Purification notes	ab194518 was purified by affinity-chromatography using epitope-specific phosphopeptide. Non-phospho specific antibodies were removed by chromatography using non-phosphopeptide.
Clonality	Polyclonal
Isotype	IgG

Applications

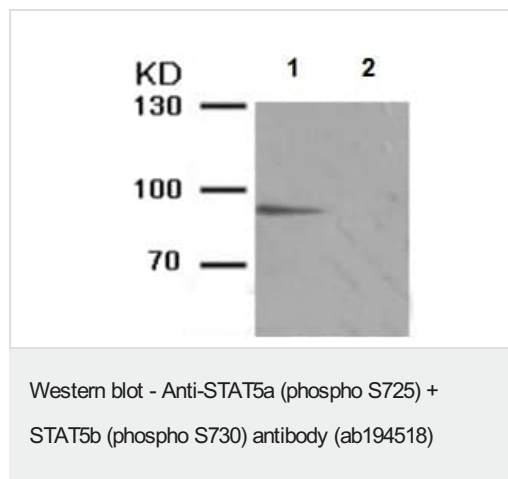
The Abpromise guarantee Our **Abpromise guarantee** covers the use of ab194518 in the following tested applications.
The application notes include recommended starting dilutions; optimal dilutions/concentrations should be determined by the end user.

Application	Abreviews	Notes
WB		1/500 - 1/1000. Predicted molecular weight: 91, 90 kDa.

Target

Cellular localization STAT5a: Cytoplasm. Nucleus. Translocated into the nucleus in response to phosphorylation.
STAT5b: Cytoplasm. Nucleus. Translocated into the nucleus in response to phosphorylation.

Images



All lanes : Anti-STAT5a (phospho S725) + STAT5b (phospho S730) antibody (ab194518) at 1/500 dilution

Lane 1 : EGF treated Jurkat cell extract

Lane 2 : EGF treated Jurkat cell extract with antigen-specific peptide.

Predicted band size: 91, 90 kDa

Please note: All products are "FOR RESEARCH USE ONLY. NOT FOR USE IN DIAGNOSTIC PROCEDURES"

Our Abpromise to you: Quality guaranteed and expert technical support

- Replacement or refund for products not performing as stated on the datasheet

- Valid for 12 months from date of delivery
- Response to your inquiry within 24 hours
- We provide support in Chinese, English, French, German, Japanese and Spanish
- Extensive multi-media technical resources to help you
- We investigate all quality concerns to ensure our products perform to the highest standards

If the product does not perform as described on this datasheet, we will offer a refund or replacement. For full details of the Abpromise, please visit <https://www.abcam.com/abpromise> or contact our technical team.

Terms and conditions

- Guarantee only valid for products bought direct from Abcam or one of our authorized distributors