

Product datasheet

Anti-STELLAR antibody ab74531

★☆☆☆☆ [1 Abreviews](#) [1 References](#) [1 Image](#)

Overview

Product name	Anti-STELLAR antibody
Description	Rabbit polyclonal to STELLAR
Host species	Rabbit
Tested applications	Suitable for: WB
Species reactivity	Reacts with: Human
Immunogen	Synthetic peptide corresponding to Human STELLAR (C terminal). Database link: NP_954980
Positive control	293 cell lysate
General notes	<p>The Life Science industry has been in the grips of a reproducibility crisis for a number of years. Abcam is leading the way in addressing this with our range of recombinant monoclonal antibodies and knockout edited cell lines for gold-standard validation. Please check that this product meets your needs before purchasing.</p> <p>If you have any questions, special requirements or concerns, please send us an inquiry and/or contact our Support team ahead of purchase. Recommended alternatives for this product can be found below, along with publications, customer reviews and Q&As</p>

Properties

Form	Liquid
Storage instructions	Shipped at 4°C. Store at +4°C.
Storage buffer	pH: 7.2 Preservative: 0.02% Sodium azide Constituent: PBS
Purity	Immunogen affinity purified
Clonality	Polyclonal
Isotype	IgG

Applications

The Abpromise guarantee Our [Abpromise guarantee](#) covers the use of ab74531 in the following tested applications.

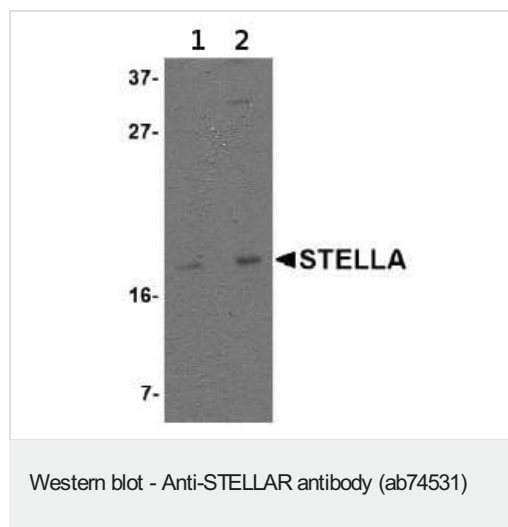
The application notes include recommended starting dilutions; optimal dilutions/concentrations should be determined by the end user.

Application	Abreviews	Notes
WB		Use a concentration of 1 - 2 µg/ml. Detects a band of approximately 18 kDa (predicted molecular weight: 18 kDa).

Target

Function	May play a role in maintaining cell pluripotentiality.
Tissue specificity	Low expression in testis, ovary and thymus. Expressed in embryonic stem and carcinoma cells. Highly expressed in testicular germ cell tumors.
Developmental stage	Expressed in fetal ovary.
Cellular localization	Nucleus. Cytoplasm.
Form	Stella is a gene specifically expressed in primordial germ cells, oocytes, preimplantation embryos and pluripotent cells. It encodes a protein with a SAP-like domain and a splicing factor motif-like structure, suggesting possible roles in chromosomal organization or RNA processing. Embryos without Stella are compromised in preimplantation development and rarely reach the blastocyst stage.

Images



Lane 1 : Anti-STELLAR antibody (ab74531) at 1 µg/ml

Lane 2 : Anti-STELLAR antibody (ab74531) at 2 µg/ml

All lanes : 293 cell lysate

Lysates/proteins at 15 µg per lane.

Predicted band size: 18 kDa

Observed band size: 18 kDa

Please note: All products are "FOR RESEARCH USE ONLY. NOT FOR USE IN DIAGNOSTIC PROCEDURES"

Our Abpromise to you: Quality guaranteed and expert technical support

- Replacement or refund for products not performing as stated on the datasheet
- Valid for 12 months from date of delivery
- Response to your inquiry within 24 hours
- We provide support in Chinese, English, French, German, Japanese and Spanish

- Extensive multi-media technical resources to help you
- We investigate all quality concerns to ensure our products perform to the highest standards

If the product does not perform as described on this datasheet, we will offer a refund or replacement. For full details of the Abpromise, please visit <https://www.abcam.com/abpromise> or contact our technical team.

Terms and conditions

- Guarantee only valid for products bought direct from Abcam or one of our authorized distributors