

## Product datasheet

### Anti-STIM2 antibody [EPR12879] - C-terminal ab181258

Recombinant RabMAb

[1 References](#) [2 Images](#)

#### Overview

<b>Product name</b>	Anti-STIM2 antibody [EPR12879] - C-terminal
<b>Description</b>	Rabbit monoclonal [EPR12879] to STIM2 - C-terminal
<b>Host species</b>	Rabbit
<b>Tested applications</b>	<b>Suitable for:</b> WB
<b>Species reactivity</b>	<b>Reacts with:</b> Human
<b>Immunogen</b>	Synthetic peptide. This information is proprietary to Abcam and/or its suppliers.
<b>Positive control</b>	A673 and BxPC3 cell lysates.
<b>General notes</b>	<p>This product is a recombinant monoclonal antibody, which offers several advantages including:</p> <ul style="list-style-type: none"> <li>- High batch-to-batch consistency and reproducibility</li> <li>- Improved sensitivity and specificity</li> <li>- Long-term security of supply</li> <li>- Animal-free production</li> </ul> <p>For more information <a href="#">see here</a>.</p> <p>Our RabMAb<sup>®</sup> technology is a patented hybridoma-based technology for making rabbit monoclonal antibodies. For details on our patents, please refer to <a href="#">RabMAb<sup>®</sup> patents</a>.</p>

#### Properties

<b>Form</b>	Liquid
<b>Storage instructions</b>	Shipped at 4°C. Store at +4°C short term (1-2 weeks). Upon delivery aliquot. Store at -20°C long term. Avoid freeze / thaw cycle.
<b>Storage buffer</b>	<p>Preservative: 0.01% Sodium azide</p> <p>Constituents: 40% Glycerol (glycerin, glycerine), 59% PBS, 0.05% BSA</p>
<b>Purity</b>	Protein A purified
<b>Clonality</b>	Monoclonal
<b>Clone number</b>	EPR12879
<b>Isotype</b>	IgG

#### Applications

## Applications

### The Abpromise guarantee

Our **Abpromise guarantee** covers the use of ab181258 in the following tested applications.

The application notes include recommended starting dilutions; optimal dilutions/concentrations should be determined by the end user.

Application	Abreviews	Notes
WB		1/1000 - 1/10000. Detects a band of approximately 84 kDa (predicted molecular weight: 84 kDa).

## Target

### Function

Functions as a highly sensitive Ca(2+) sensor in the endoplasmic reticulum which activates both store-operated and store-independent Ca(2+)-influx. Regulates basal cytosolic and endoplasmic reticulum Ca(2+) concentrations. Upon mild variations of the endoplasmic reticulum Ca(2+) concentration, translocates from the endoplasmic reticulum to the plasma membrane where it probably activates the Ca(2+) release-activated Ca(2+) (CRAC) channels ORAI1, ORAI2 and ORAI3. May inhibit STIM1-mediated Ca(2+) influx.

### Tissue specificity

Expressed in all tissues and tumor cell lines examined.

### Sequence similarities

Contains 1 EF-hand domain.  
Contains 1 SAM (sterile alpha motif) domain.

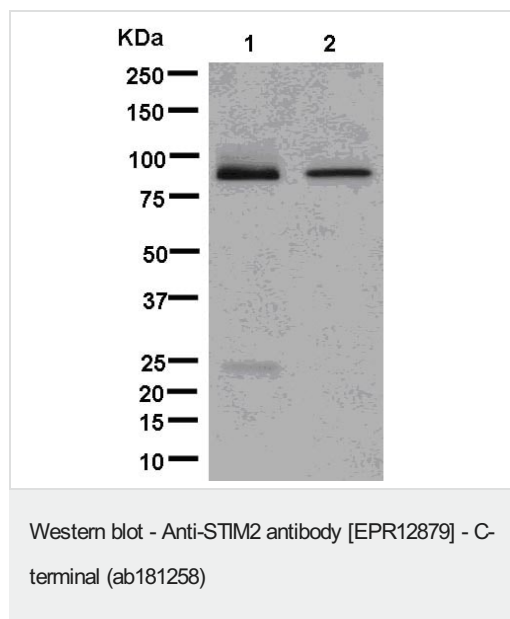
### Post-translational modifications

Glycosylated.  
Phosphorylated predominantly on Ser residues.

### Cellular localization

Endoplasmic reticulum membrane. Dynamically translocates from a uniform endoplasmic reticulum distribution to punctual endoplasmic reticulum-plasma membrane junctions in response to decrease in endoplasmic reticulum Ca(2+) concentration.

## Images



**All lanes :** Anti-STIM2 antibody [EPR12879] - C-terminal (ab181258) at 1/10000 dilution

**Lane 1 :** A673 cell lysate

**Lane 2 :** BxPC3 cell lysate

Lysates/proteins at 10 µg per lane.

### Secondary

**All lanes :** Goat Anti-Rabbit IgG, (H+L), Peroxidase conjugated) at 1/1000 dilution

**Predicted band size:** 84 kDa

### Why choose a recombinant antibody?



**Research with confidence**  
Consistent and reproducible results



**Long-term and scalable supply**  
Recombinant technology



**Success from the first experiment**  
Confirmed specificity



**Ethical standards compliant**  
Animal-free production

Anti-STIM2 antibody [EPR12879] - C-terminal  
(ab181258)

**Please note:** All products are "FOR RESEARCH USE ONLY. NOT FOR USE IN DIAGNOSTIC PROCEDURES"

### Our Abpromise to you: Quality guaranteed and expert technical support

---

- Replacement or refund for products not performing as stated on the datasheet
- Valid for 12 months from date of delivery
- Response to your inquiry within 24 hours
- We provide support in Chinese, English, French, German, Japanese and Spanish
- Extensive multi-media technical resources to help you
- We investigate all quality concerns to ensure our products perform to the highest standards

If the product does not perform as described on this datasheet, we will offer a refund or replacement. For full details of the Abpromise, please visit <https://www.abcam.com/abpromise> or contact our technical team.

### Terms and conditions

---

- Guarantee only valid for products bought direct from Abcam or one of our authorized distributors