


Anti-STUB1/CHIP antibody ab228742

4 Images

Overview

Product name	Anti-STUB1/CHIP antibody
Description	Rabbit polyclonal to STUB1/CHIP
Host species	Rabbit
Tested applications	Suitable for: IHC-P, WB, ICC/IF
Species reactivity	Reacts with: Mouse, Human Predicted to work with: Rat, Chicken, Rhesus monkey, Bovine papillomavirus 
Immunogen	Synthetic peptide within Human STUB1/CHIP (C terminal). The exact sequence is proprietary. Carrier-protein conjugated. Database link: Q9UNE7
Positive control	WB: HEK-293T and HepG2 whole cell lysate. IHC-P: Mouse esophagus tissue; ES2 xenograft tissue. ICC/IF: HeLa cells.
General notes	<p>The Life Science industry has been in the grips of a reproducibility crisis for a number of years. Abcam is leading the way in addressing this with our range of recombinant monoclonal antibodies and knockout edited cell lines for gold-standard validation. Please check that this product meets your needs before purchasing.</p> <p>If you have any questions, special requirements or concerns, please send us an inquiry and/or contact our Support team ahead of purchase. Recommended alternatives for this product can be found below, along with publications, customer reviews and Q&As</p>

Properties

Form	Liquid
Storage instructions	Shipped at 4°C. Store at +4°C short term (1-2 weeks). Upon delivery aliquot. Store at -20°C long term. Avoid freeze / thaw cycle.
Storage buffer	pH: 7.00 Preservative: 0.01% Thimerosal (merthiolate) Constituents: 1.21% Tris, 0.75% Glycine, 10% Glycerol (glycerin, glycerine)
Purity	Immunogen affinity purified
Clonality	Polyclonal
Isotype	IgG

Applications

The Abpromise guarantee

Our **Abpromise guarantee** covers the use of ab228742 in the following tested applications.

The application notes include recommended starting dilutions; optimal dilutions/concentrations should be determined by the end user.

Application	Abreviews	Notes
IHC-P		1/100 - 1/1000.
WB		1/500 - 1/3000. Predicted molecular weight: 35 kDa.
ICC/IF		1/100 - 1/1000.

Target

Function

E3 ubiquitin-protein ligase which targets misfolded chaperone substrates towards proteasomal degradation. Ubiquitinates NOS1 in concert with Hsp70 and Hsp40. Modulates the activity of several chaperone complexes, including Hsp70, Hsc70 and Hsp90. Mediates transfer of non-canonical short ubiquitin chains to HSPA8 that have no effect on HSPA8 degradation. Mediates polyubiquitination of DNA polymerase beta (POLB) at 'Lys-41', 'Lys-61' and 'Lys-81', thereby playing a role in base-excision repair: catalyzes polyubiquitination by amplifying the HUWE1/ARF-BP1-dependent monoubiquitination and leading to POLB-degradation by the proteasome. Mediates polyubiquitination of CYP3A4.

Tissue specificity

Highly expressed in skeletal muscle, heart, pancreas, brain and placenta. Detected in kidney, liver and lung.

Pathway

Protein modification; protein ubiquitination.

Sequence similarities

Contains 3 TPR repeats.
Contains 1 U-box domain.

Domain

The TPR domain is essential for ubiquitination mediated by UBE2D1.

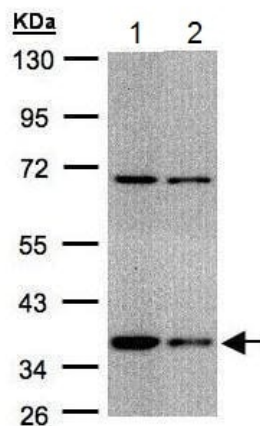
Post-translational modifications

Phosphorylated upon DNA damage, probably by ATM or ATR.
Auto-ubiquitinated; mediated by UBE2D1 and UBE2D2.

Cellular localization

Cytoplasm.

Images



Western blot - Anti-STUB1/CHIP antibody
(ab228742)

All lanes : Anti-STUB1/CHIP antibody (ab228742) at 1/1000 dilution

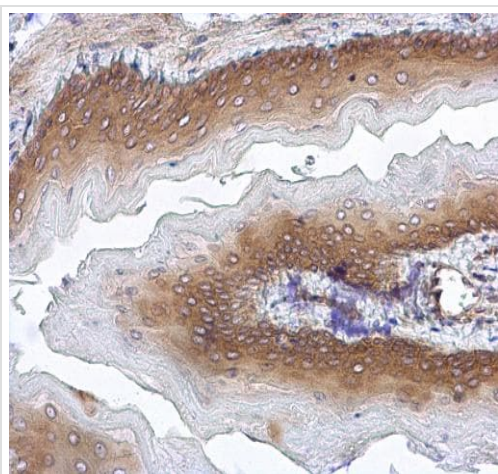
Lane 1 : HEK-293T (human epithelial cell line from embryonic kidney transformed with large T antigen) whole cell lysate

Lane 2 : HepG2 (human liver hepatocellular carcinoma cell line) whole cell lysate

Lysates/proteins at 30 µg per lane.

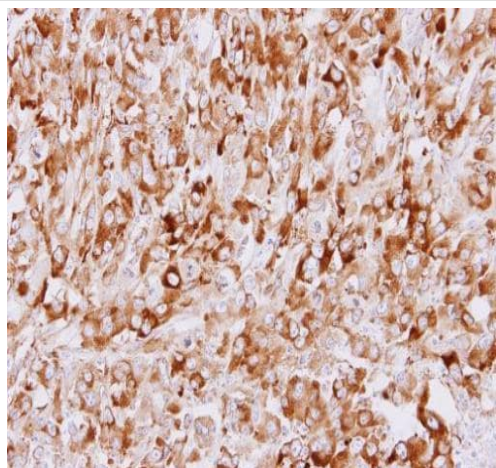
Predicted band size: 35 kDa

10% SDS-PAGE gel.



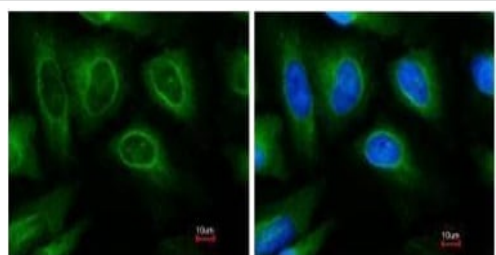
Immunohistochemistry (Formalin/PFA-fixed paraffin-embedded sections) - Anti-STUB1/CHIP antibody
(ab228742)

Paraffin-embedded mouse esophagus tissue stained for STUB1/CHIP using ab228742 at 1/500 dilution in immunohistochemical analysis.



Immunohistochemistry (Formalin/PFA-fixed paraffin-embedded sections) - Anti-STUB1/CHIP antibody (ab228742)

Paraffin-embedded ES2 xenograft tissue stained for STUB1/CHIP using ab228742 at 1/500 dilution in immunohistochemical analysis.



Immunocytochemistry/ Immunofluorescence - Anti-STUB1/CHIP antibody (ab228742)

Paraformaldehyde-fixed HeLa (human epithelial cell line from cervix adenocarcinoma) cells stained for STUB1/CHIP (green) using ab228742 at 1/200 dilution in ICC/IF.

Nuclear counterstain: DNA probe (blue).

Please note: All products are "FOR RESEARCH USE ONLY. NOT FOR USE IN DIAGNOSTIC PROCEDURES"

Our Abpromise to you: Quality guaranteed and expert technical support

- Replacement or refund for products not performing as stated on the datasheet
- Valid for 12 months from date of delivery
- Response to your inquiry within 24 hours
- We provide support in Chinese, English, French, German, Japanese and Spanish
- Extensive multi-media technical resources to help you
- We investigate all quality concerns to ensure our products perform to the highest standards

If the product does not perform as described on this datasheet, we will offer a refund or replacement. For full details of the Abpromise, please visit <https://www.abcam.com/abpromise> or contact our technical team.

Terms and conditions

- Guarantee only valid for products bought direct from Abcam or one of our authorized distributors