

Product datasheet

Anti-Sumo 2 + Sumo 3 + Sumo 4 antibody [EPR300(2)] ab109196

Recombinant RabMAb

★★★★★ [3 Abreviews](#) [4 Images](#)

Overview

Product name	Anti-Sumo 2 + Sumo 3 + Sumo 4 antibody [EPR300(2)]
Description	Rabbit monoclonal [EPR300(2)] to Sumo 2 + Sumo 3 + Sumo 4
Host species	Rabbit
Tested applications	Suitable for: WB, IHC-P Unsuitable for: Flow Cyt or IP
Species reactivity	Reacts with: Human
Immunogen	Synthetic peptide. This information is proprietary to Abcam and/or its suppliers.
Positive control	Paraffin-embedded Human ovarian tissue HeLa and Jurkat cell lysates
General notes	<p>This product is a recombinant monoclonal antibody, which offers several advantages including:</p> <ul style="list-style-type: none"> - High batch-to-batch consistency and reproducibility - Improved sensitivity and specificity - Long-term security of supply - Animal-free production <p>For more information see here.</p> <p>Our RabMAb[®] technology is a patented hybridoma-based technology for making rabbit monoclonal antibodies. For details on our patents, please refer to RabMAb[®] patents.</p> <p>Mouse, Rat: We have preliminary internal testing data to indicate this antibody may not react with these species. Please contact us for more information.</p>

Properties

Form	Liquid
Storage instructions	Shipped at 4°C. Store at -20°C. Stable for 12 months at -20°C.
Storage buffer	<p>pH: 7.20</p> <p>Preservative: 0.01% Sodium azide</p> <p>Constituents: 9% PBS, 40% Glycerol (glycerin, glycerine), 0.05% BSA, 50% Tissue culture supernatant</p>
Purity	Protein A purified

Clonality	Monoclonal
Clone number	EPR300(2)
Isotype	IgG

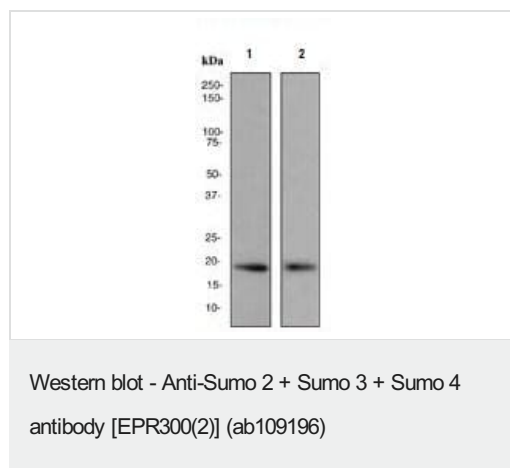
Applications

The Abpromise guarantee Our **Abpromise guarantee** covers the use of ab109196 in the following tested applications. The application notes include recommended starting dilutions; optimal dilutions/concentrations should be determined by the end user.

Application	Abreviews	Notes
WB		1/1000 - 1/10000. Predicted molecular weight: 12 kDa.
IHC-P	★★★★★ (2)	1/100 - 1/250. Perform heat mediated antigen retrieval with citrate buffer pH 6 before commencing with IHC staining protocol.

Application notes Is unsuitable for Flow Cyt or IP.

Images



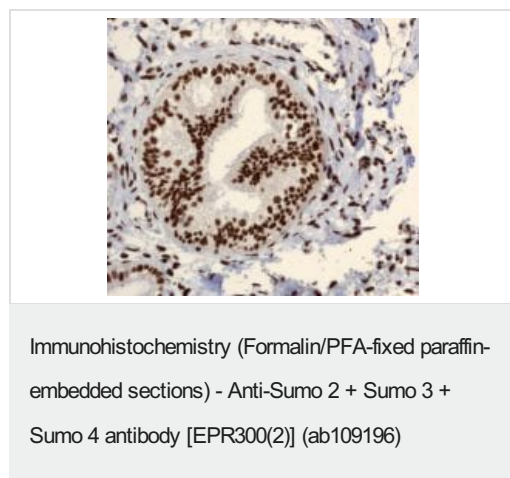
All lanes : Anti-Sumo 2 + Sumo 3 + Sumo 4 antibody [EPR300(2)] (ab109196) at 1/1000 dilution

Lane 1 : HeLa cell lysate

Lane 2 : Jurkat cell lysate

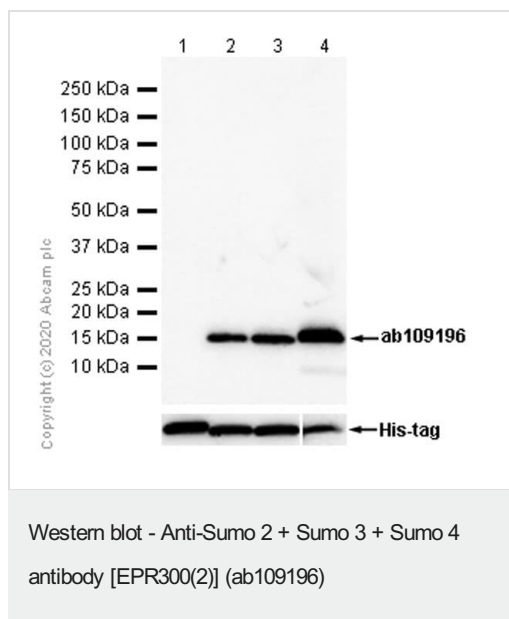
Lysates/proteins at 10 µg per lane.

Predicted band size: 12 kDa



ab109196, at 1/100, staining Sumo 2 + Sumo 3 + Sumo 4 in paraffin-embedded Human ovarian tissue by Immunohistochemistry.

Perform heat mediated antigen retrieval with citrate buffer pH 6 before commencing with IHC staining protocol.



All lanes : Anti-Sumo 2 + Sumo 3 + Sumo 4 antibody [EPR300(2)] (ab109196) at 1/200 dilution

Lane 1 : Recombinant Human Sumo 1 protein ([ab140417](#)) at 0.01 µg

Lane 2 : Recombinant Human Sumo 2 protein ([ab140420](#)) at 0.01 µg

Lane 3 : Recombinant Human Sumo 3 protein ([ab140414](#)) at 0.01 µg

Lane 4 : Recombinant Human Sumo 4 protein ([ab157025](#)) at 0.1 µg

Secondary

All lanes : Goat Anti-Rabbit IgG H&L (HRP) ([ab97051](#)) at 1/20000 dilution

Developed using the ECL technique.

Predicted band size: 12 kDa

Observed band size: 16 kDa

Exposure time: 20 seconds

Blocking buffer: 5% NFDM/TBST

Why choose a recombinant antibody?

 <p>Research with confidence Consistent and reproducible results</p>	 <p>Long-term and scalable supply Recombinant technology</p>
 <p>Success from the first experiment Confirmed specificity</p>	 <p>Ethical standards compliant Animal-free production</p>

Anti-Sumo 2 + Sumo 3 + Sumo 4 antibody [EPR300(2)] (ab109196)

Please note: All products are "FOR RESEARCH USE ONLY. NOT FOR USE IN DIAGNOSTIC PROCEDURES"

Our Abpromise to you: Quality guaranteed and expert technical support

- Replacement or refund for products not performing as stated on the datasheet
- Valid for 12 months from date of delivery
- Response to your inquiry within 24 hours

- We provide support in Chinese, English, French, German, Japanese and Spanish
- Extensive multi-media technical resources to help you
- We investigate all quality concerns to ensure our products perform to the highest standards

If the product does not perform as described on this datasheet, we will offer a refund or replacement. For full details of the Abpromise, please visit <https://www.abcam.com/abpromise> or contact our technical team.

Terms and conditions

- Guarantee only valid for products bought direct from Abcam or one of our authorized distributors