

Product datasheet

Anti-Survivin antibody [EP2880Y] ab76424

Recombinant RabMAb

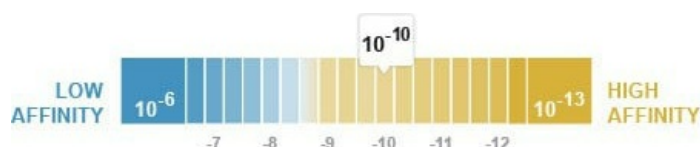
★★★★★ **9 Abreviews** **147 References** [20 Images](#)

Overview

Product name	Anti-Survivin antibody [EP2880Y]
Description	Rabbit monoclonal [EP2880Y] to Survivin
Host species	Rabbit
Tested applications	Suitable for: IHC-P, WB, IP, ICC/IF, Sandwich ELISA, Flow Cyt (Intra)
Species reactivity	Reacts with: Human
Immunogen	Synthetic peptide. This information is proprietary to Abcam and/or its suppliers.
Positive control	HeLa and Jurkat lysates; human urinary bladder carcinoma and human colonic adenocarcinoma tissues; A549; Ramos; Human bladder carcinoma flow cyt (intra): Human PBMCs
General notes	<p>This product is a recombinant monoclonal antibody, which offers several advantages including:</p> <ul style="list-style-type: none"> - High batch-to-batch consistency and reproducibility - Improved sensitivity and specificity - Long-term security of supply - Animal-free production <p>For more information see here.</p> <p>Our RabMAb[®] technology is a patented hybridoma-based technology for making rabbit monoclonal antibodies. For details on our patents, please refer to RabMAb[®] patents.</p> <p>Mouse, Rat: We have preliminary internal testing data to indicate this antibody may not react with these species. Please contact us for more information.</p>

Properties

Form	Liquid
Storage instructions	Shipped at 4°C. Store at +4°C short term (1-2 weeks). Upon delivery aliquot. Store at -20°C long term. Avoid freeze / thaw cycle.
Dissociation constant (K_D)	K _D = 4.40 x 10 ⁻¹⁰ M



[Learn more about K_D](#)

Storage buffer	pH: 7.20 Preservative: 0.01% Sodium azide Constituents: 59% PBS, 40% Glycerol (glycerin, glycerine), 0.5% BSA
Purity	Protein A purified
Clonality	Monoclonal
Clone number	EP2880Y
Isotype	IgG

Applications

The Abpromise guarantee Our **Abpromise guarantee** covers the use of ab76424 in the following tested applications. The application notes include recommended starting dilutions; optimal dilutions/concentrations should be determined by the end user.

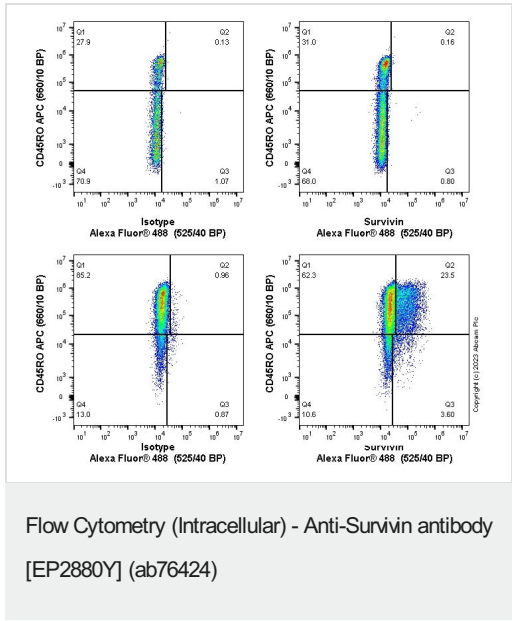
Application	Abreviews	Notes
IHC-P	★★★★★ (2)	1/1000. Perform heat mediated antigen retrieval with Tris/EDTA buffer pH 9.0 before commencing with IHC staining protocol. Signal amplification system might be necessary or the use of polymerized HRP secondary antibodies. For unpurified use at 1/250 - 1/500.
WB	★★★★★ (3)	1/5000 - 1/20000. Detects a band of approximately 16 kDa (predicted molecular weight: 16 kDa).
IP		1/150. For unpurified use at 1:10.
ICC/IF	★★★★★ (2)	1/100 - 1/250.
Sandwich ELISA		Use a concentration of 0.5 µg/ml. For sandwich ELISA, use this antibody as detection at 0.5µg/ml with ab27468 as capture.
Flow Cyt (Intra)		1/500. ab172730 - Rabbit monoclonal IgG, is suitable for use as an isotype control with this antibody. For unpurified use at 1/50.

Target

Function	Component of the chromosomal passenger complex (CPC), a complex that acts as a key regulator of mitosis. The CPC complex has essential functions at the centromere in ensuring correct chromosome alignment and segregation and is required for chromatin-induced microtubule stabilization and spindle assembly. The complex with RAN plays a role in mitotic spindle formation by serving as a physical scaffold to help deliver the RAN effector molecule TPX2 to microtubules. May play a role in neoplasia. May counteract a default induction of apoptosis in G2/M phase. Inhibitor of caspase-3 and caspase-7. Isoform 2 and isoform 3 do not appear to play vital roles in mitosis. Isoform 3 shows a marked reduction in its anti-apoptotic effects when compared with the displayed wild-type isoform.
----------	--

Tissue specificity	Expressed only in fetal kidney and liver, and to lesser extent, lung and brain. Abundantly expressed in adenocarcinoma (lung, pancreas, colon, breast, and prostate) and in high-grade lymphomas. Also expressed in various renal cell carcinoma cell lines.
Sequence similarities	Belongs to the IAP family. Contains 1 BIR repeat.
Developmental stage	Expression is cell cycle-dependent and peaks at mitosis.
Domain	The BIR repeat is necessary and sufficient for HBXIP binding.
Post-translational modifications	Ubiquitination is required for centrosomal targeting. In vitro phosphorylation at Thr-117 by AURKB/STK12 prevents interaction with INCENP and localization to mitotic chromosomes.
Cellular localization	Cytoplasm. Nucleus. Chromosome. Chromosome > centromere. Cytoplasm > cytoskeleton > spindle. Localizes on chromosome arms and inner centromeres from prophase through metaphase and then transferring to the spindle midzone and midbody from anaphase through cytokinesis. Colocalizes with AURKB at mitotic chromosomes.

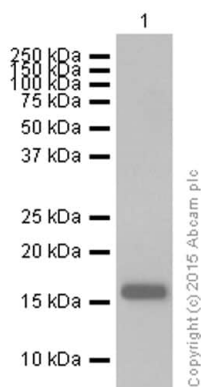
Images



Flow cytometry staining of human peripheral blood mononuclear cells (PBMCs) (top) or PBMCs treated with 1µg/mL PHA for 24h followed by 20U/mL IL-2 for 48h (bottom), with ab76424 (right) or Recombinant Rabbit IgG, monoclonal [EPR25A] - Isotype Control (left). Cells were fixed and permeabilised with BD Cytotfix/Cytoperm™ for 20 min. PBMCs were incubated for 30 min at 4°C in 1x PBS containing 10 µg/ml human IgG and 10 % normal goat serum to block FC receptors and non-specific protein-protein interaction followed by the antibody ab76424 or Recombinant Rabbit IgG, monoclonal [EPR25A] - Isotype Control (1x 10⁶ in 100 µl at 0.2 µg/ml (1/11100)) for 30 min at 4°C . The cells were simultaneously stained with CD45RO.

The secondary antibody Goat Anti-Rabbit IgG H&L (Alexa Fluor® 488) preadsorbed was incubated at 1/4000 for 30min at 4°C

Acquisition of >30000 events were collected using a 50 mW Blue laser (488nm) and 525/40 bandpass filter. Events were gated on CD4+ cells.



Western blot - Anti-Survivin antibody [EP2880Y] (ab76424)

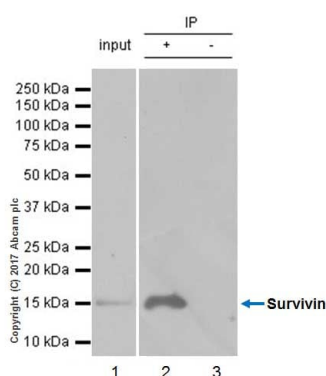
Anti-Survivin antibody [EP2880Y] (ab76424) at 1/5000 dilution (purified) + A549 (Human lung carcinoma epithelial cell) whole cell lysates at 15 µg

Secondary

Goat Anti-Rabbit IgG H&L (HRP) ([ab97051](#)) at 1/20000 dilution

Predicted band size: 16 kDa

Blocking and diluting buffer : 5% NFDM/TBST



Immunoprecipitation - Anti-Survivin antibody [EP2880Y] (ab76424)

ab76424 (purified) at 1:150 dilution (5µg) immunoprecipitating Survivin in Ramos whole cell lysate.

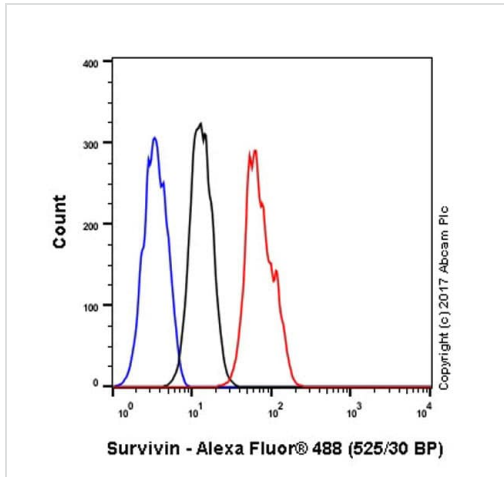
Lane 1 (input): Ramos (Human Burkitt's lymphoma B lymphocyte) whole cell lysate 10µg

Lane 2 (+): ab76424 & Ramos whole cell lysate

Lane 3 (-): Rabbit monoclonal IgG ([ab172730](#)) instead of ab76424 in Ramos whole cell lysate

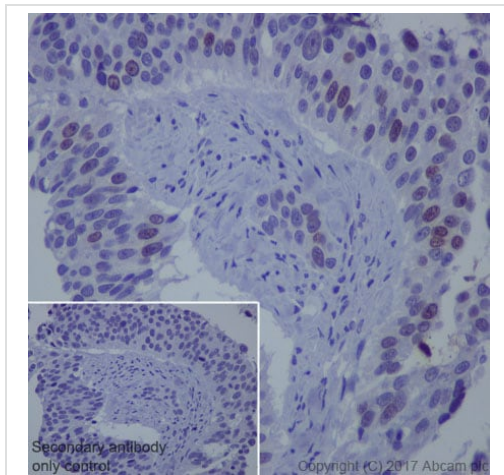
For western blotting, VeriBlot for IP Detection Reagent (HRP) ([ab131366](#)) was used for detection at 1:1000 dilution.

Blocking and diluting buffer: 5% NFDM/TBST.



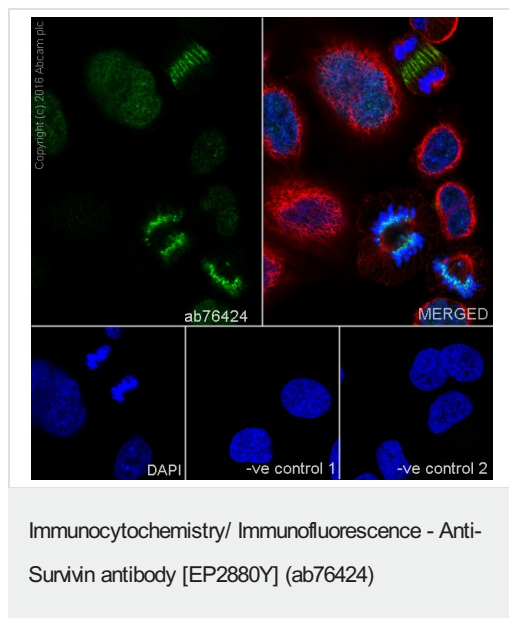
Flow Cytometry (Intracellular) - Anti-Survivin antibody
[EP2880Y] (ab76424)

Intracellular Flow Cytometry analysis of HeLa (Human cervix adenocarcinoma epithelial cell) cells labeling Survivin with purified ab76424 at 1/500 dilution (5 µg/ml) (red). Cells were fixed with 80% methanol. A Goat anti rabbit IgG (Alexa Fluor® 488) secondary antibody was used at 1/2000 dilution. Isotype control - Rabbit monoclonal IgG (Black). Unlabeled control - Cell without incubation with primary antibody and secondary antibody (Blue).



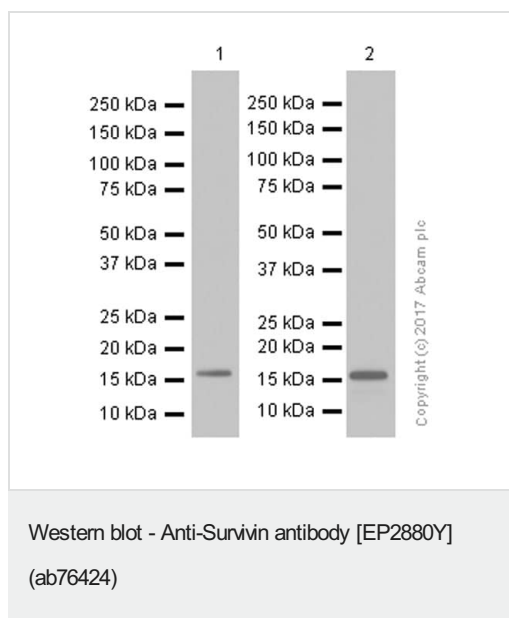
Immunohistochemistry (Formalin/PFA-fixed paraffin-embedded sections) - Anti-Survivin antibody
[EP2880Y] (ab76424)

Immunohistochemistry (Formalin/PFA-fixed paraffin-embedded sections) analysis of Human bladder carcinoma tissue sections labeling Survivin with Purified ab76424 at 1:1000 dilution (2.52 µg/ml). Heat mediated antigen retrieval was performed using Tris/EDTA Buffer, pH 9.0. Tissue was counterstained with Hematoxylin. **ab97051** Goat Anti-Rabbit IgG H&L (HRP) secondary antibody was used at 1:500 dilution. PBS instead of the primary antibody was used as the negative control.



Immunofluorescent staining of MCF-7 cells labelling Bcl-2 with purified ab76424 at 1/1000. Cells were fixed with 4% paraformaldehyde and permeabilized with 0.1% Triton X-100. **ab150077**, an Alexa Fluor® 488-conjugated goat anti-rabbit IgG (1/1000) was used as the secondary antibody. The cells were co-stained with **ab7291**, a mouse anti-tubulin (1/1000) using **ab150120**, an Alexa Fluor® 594-conjugated goat anti-mouse IgG (1/1000) as the secondary antibody. Nuclei counterstained with DAPI (blue).

Control 1: primary antibody (1/100) and secondary antibody, **ab150120**, an Alexa Fluor® 594-conjugated goat anti-mouse IgG (1/500).
Control 2: **ab7291** (1/1000) and secondary antibody, **ab150077**, an Alexa Fluor® 488-conjugated goat anti-rabbit IgG (1/500).



All lanes : Anti-Survivin antibody [EP2880Y] (ab76424) at 1/5000 dilution (purified)

Lane 1 : HeLa (Human cervix adenocarcinoma epithelial cell) whole cell lysates

Lane 2 : Ramos (Human Burkitt's lymphoma B lymphocyte) whole cell lysates

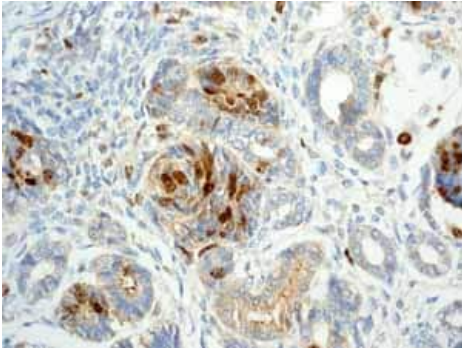
Lysates/proteins at 15 µg per lane.

Secondary

All lanes : Goat Anti-Rabbit IgG H&L (HRP) (**ab97051**) at 1/20000 dilution

Predicted band size: 16 kDa

Blocking and diluting buffer : 5% NFDM/TBST

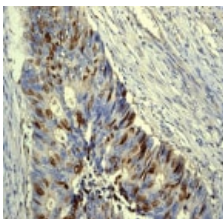


Immunohistochemistry (Formalin/PFA-fixed paraffin-embedded sections) - Anti-Survivin antibody [EP2880Y] (ab76424)

Unpurified ab76424 showing positive staining in Fetal kidney tissue. Heat mediated antigen retrieval was performed before commencing with IHC staining protocol.

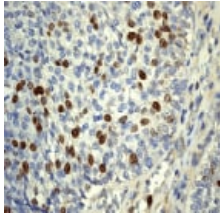
Flow Cytometry (Intracellular) - Anti-Survivin antibody [EP2880Y] (ab76424)

Overlay histogram showing HeLa cells stained with unpurified ab76424 (red line). The cells were fixed with methanol (5 min) and then permeabilized with 0.1% PBS-Tween for 20 min. The cells were then incubated in 1x PBS / 10% normal goat serum / 0.3M glycine to block non-specific protein-protein interactions followed by the antibody (ab76424, 1/50 dilution) for 30 min at 22°C. The secondary antibody used was DyLight® 488 goat anti-rabbit IgG (H+L) ([ab96899](#)) at 1/500 dilution for 30 min at 22°C. Isotype control antibody (black line) was rabbit monoclonal IgG (1µg/1x10⁶ cells) used under the same conditions. Acquisition of >5,000 events was performed. This antibody gave a decreased signal in HeLa cells fixed with 4% paraformaldehyde/permeabilized with 0.1% PBS-Tween 20 used under the same conditions.



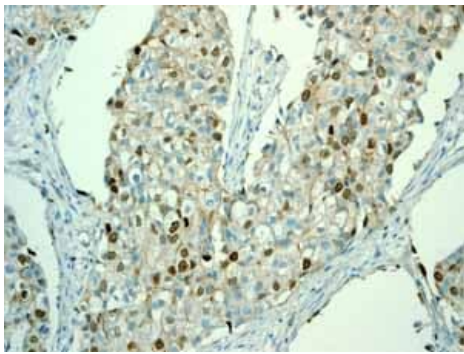
Immunohistochemistry (Formalin/PFA-fixed paraffin-embedded sections) - Anti-Survivin antibody [EP2880Y] (ab76424)

Unpurified ab76424 at 1/250 dilution staining Survivin in human colonic adenocarcinoma by Immunohistochemistry, Paraffin-embedded tissue. Heat mediated antigen retrieval was performed before commencing with IHC staining protocol.



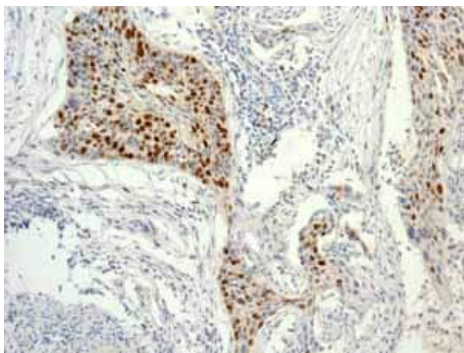
Immunohistochemistry (Formalin/PFA-fixed paraffin-embedded sections) - Anti-Survivin antibody
[EP2880Y] (ab76424)

Unpurified ab76424 at 1/250 dilution staining Survivin in human urinary bladder carcinoma by Immunohistochemistry, Paraffin-embedded tissue. Heat mediated antigen retrieval was performed before commencing with IHC staining protocol.



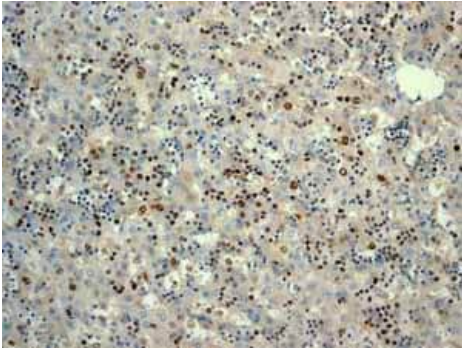
Immunohistochemistry (Formalin/PFA-fixed paraffin-embedded sections) - Anti-Survivin antibody
[EP2880Y] (ab76424)

Unpurified ab76424 showing positive staining in breast carcinoma tissue. Heat mediated antigen retrieval was performed before commencing with IHC staining protocol.



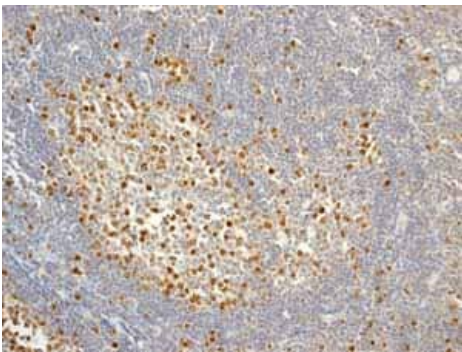
Immunohistochemistry (Formalin/PFA-fixed paraffin-embedded sections) - Anti-Survivin antibody
[EP2880Y] (ab76424)

Unpurified ab76424 showing positive staining in cervical carcinoma tissue. Heat mediated antigen retrieval was performed before commencing with IHC staining protocol.



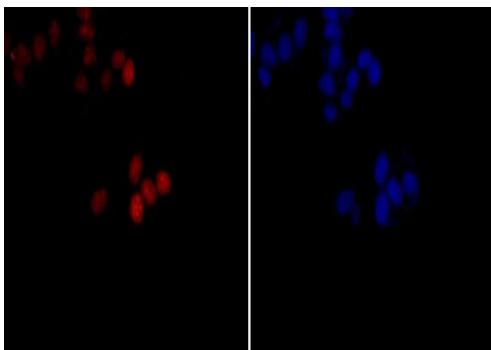
Immunohistochemistry (Formalin/PFA-fixed paraffin-embedded sections) - Anti-Survivin antibody [EP2880Y] (ab76424)

Unpurified ab76424 showing positive staining in fetal liver tissue. Heat mediated antigen retrieval was performed before commencing with IHC staining protocol.



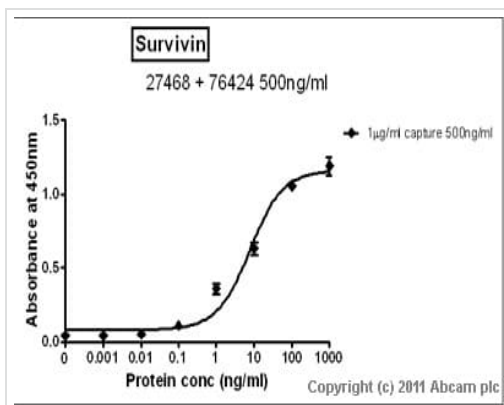
Immunohistochemistry (Formalin/PFA-fixed paraffin-embedded sections) - Anti-Survivin antibody [EP2880Y] (ab76424)

Unpurified ab76424 showing positive staining in normal tonsil tissue. Heat mediated antigen retrieval was performed before commencing with IHC staining protocol.



Immunocytochemistry/ Immunofluorescence - Anti-Survivin antibody [EP2880Y] (ab76424)

Immunocytochemistry/Immunofluorescence analysis of MCF-7 cells labelling Survivin with unpurified ab76424 at 1/100. Cells were fixed with 4% paraformaldehyde for 20 minutes at room temperature. Cells were incubated with the primary antibody overnight. An Alexa Fluor® 555-conjugated anti-rabbit IgG was used as the secondary antibody. Left - Survivin, Right - DAPI.



Sandwich ELISA - Anti-Survivin antibody [EP2880Y]
(ab76424)

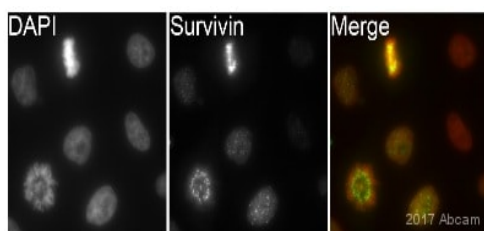
Standard curve for Survivin (Analyte: [ab87202](#)); dilution range 1pg/ml to 1µg/ml using Capture Antibody [ab27468](#) at 1µg/ml and Detector Antibody abRabbit monoclonal [EP2880Y] to Survivin (ab76424) at 0.5µg/ml. Concentration of Rabbit monoclonal [EP2880Y] to Survivin (ab76424) may vary from lot to lot; please use this curve as guideline.

OI-RD Scanning - Anti-Survivin antibody [EP2880Y]
(ab76424)

Equilibrium disassociation constant (K_D)

Learn more about K_D

[Click here to learn more about \$K_D\$](#)



Immunocytochemistry/ Immunofluorescence - Anti-Survivin antibody [EP2880Y] (ab76424)

This image is courtesy of an abreview by Kirk Mcmanus

ab76424 staining Survivin in the Hela cell line from Human cervix by ICC/IF (Immunocytochemistry/immunofluorescence). Cells were fixed with paraformaldehyde, permeabilized with 0.5% Triton X-100. Samples were incubated with primary antibody (1/500 in PBS) for 1 hour at 22°C. Ab150081 (1/200) was used as the secondary antibody.

Why choose a
recombinant antibody?



Research with
confidence
Consistent and
reproducible results



Long-term and
scalable supply
Recombinant
technology



Success from the
first experiment
Confirmed
specificity



Ethical standards
compliant
Animal-free
production

Anti-Survivin antibody [EP2880Y] (ab76424)

Please note: All products are "FOR RESEARCH USE ONLY. NOT FOR USE IN DIAGNOSTIC PROCEDURES"

Our Abpromise to you: Quality guaranteed and expert technical support

- Replacement or refund for products not performing as stated on the datasheet
- Valid for 12 months from date of delivery
- Response to your inquiry within 24 hours
- We provide support in Chinese, English, French, German, Japanese and Spanish
- Extensive multi-media technical resources to help you
- We investigate all quality concerns to ensure our products perform to the highest standards

If the product does not perform as described on this datasheet, we will offer a refund or replacement. For full details of the Abpromise, please visit <https://www.abcam.com/abpromise> or contact our technical team.

Terms and conditions

- Guarantee only valid for products bought direct from Abcam or one of our authorized distributors