


## Product datasheet

# Anti-SV2A antibody ab32942

★★★★★ [7 Abreviews](#) [35 References](#) [2 Images](#)

### Overview

---

<b>Product name</b>	Anti-SV2A antibody
<b>Description</b>	Rabbit polyclonal to SV2A
<b>Host species</b>	Rabbit
<b>Tested applications</b>	<b>Suitable for:</b> WB, IP
<b>Species reactivity</b>	<b>Reacts with:</b> Mouse, Rat <b>Predicted to work with:</b> Cow, Human 
<b>Immunogen</b>	Synthetic peptide. This information is proprietary to Abcam and/or its suppliers.
<b>Positive control</b>	WB: mouse and rat brain.
<b>General notes</b>	<p>The Life Science industry has been in the grips of a reproducibility crisis for a number of years. Abcam is leading the way in addressing this with our range of recombinant monoclonal antibodies and knockout edited cell lines for gold-standard validation. Please check that this product meets your needs before purchasing.</p> <p>If you have any questions, special requirements or concerns, please send us an inquiry and/or contact our Support team ahead of purchase. Recommended alternatives for this product can be found below, along with publications, customer reviews and Q&amp;As</p>

### Properties

---

<b>Form</b>	Liquid
<b>Storage instructions</b>	Shipped at 4°C. Store at +4°C short term (1-2 weeks). Upon delivery aliquot. Store at -20°C or -80°C. Avoid freeze / thaw cycle.
<b>Storage buffer</b>	pH: 7.40 Preservative: 0.02% Sodium azide Constituent: PBS  Batches of this product that have a concentration < 1mg/ml may have BSA added as a stabilising agent. If you would like information about the formulation of a specific lot, please contact our scientific support team who will be happy to help.
<b>Purity</b>	Immunogen affinity purified
<b>Clonality</b>	Polyclonal
<b>Isotype</b>	IgG

## Applications

### The Abpromise guarantee

Our **Abpromise guarantee** covers the use of ab32942 in the following tested applications.

The application notes include recommended starting dilutions; optimal dilutions/concentrations should be determined by the end user.

Application	Abreviews	Notes
WB	★★★★★ (1)	Use at an assay dependent concentration. Detects a band of approximately 82-92 kDa (predicted molecular weight: 83 kDa).
IP	★★★★★ (1)	Use at an assay dependent concentration.

## Target

### Function

Plays a role in the control of regulated secretion in neural and endocrine cells, enhancing selectively low-frequency neurotransmission. Positively regulates vesicle fusion by maintaining the readily releasable pool of secretory vesicles.

### Sequence similarities

Belongs to the major facilitator superfamily.

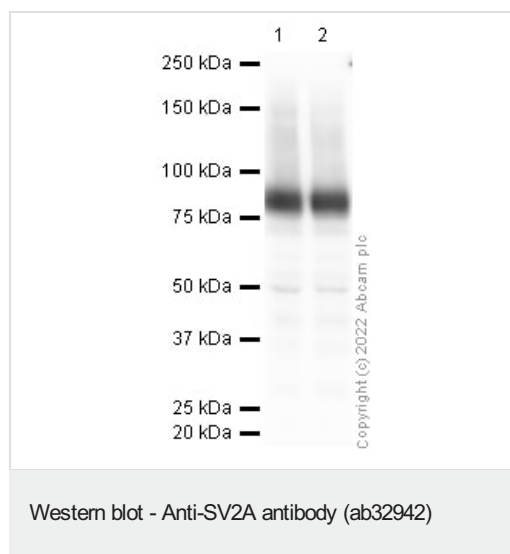
### Post-translational modifications

Phosphorylation by CK1 of the N-terminal cytoplasmic domain regulates interaction with SYT1. N-glycosylated.

### Cellular localization

Cytoplasmic vesicle > secretory vesicle > synaptic vesicle membrane. Enriched in chromaffin granules, not present in adrenal microsomes. Associated with both insulin granules and synaptic-like microvesicles in insulin-secreting cells of the pancreas.

## Images



**All lanes :** Anti-SV2A antibody (ab32942) at 1 µg/ml

**Lane 1 :** Mouse brain

**Lane 2 :** Rat brain

Lysates/proteins at 20 µg per lane.

### Secondary

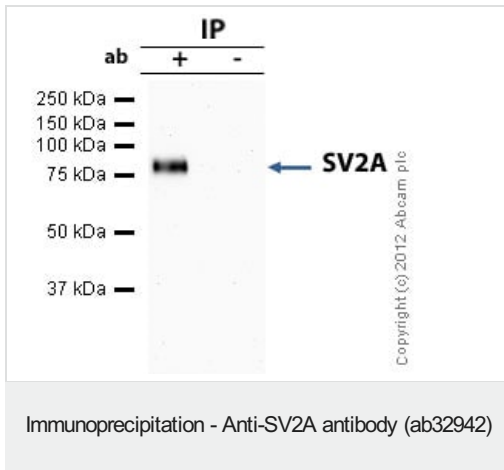
**All lanes :** Goat polyclonal to Rabbit IgG - H&L - Pre-Adsorbed (HRP) at 1/50000 dilution

**Predicted band size:** 83 kDa

**Observed band size:** 82 kDa

**Exposure time:** 1 minute

Blocking buffer: 2% BSA.



SV2A was immunoprecipitated using 0.5mg Mouse Brain whole tissue lysate, 5µg of Rabbit polyclonal to SV2A and 50µl of protein G magnetic beads (+). No antibody was added to the control (-). The antibody was incubated under agitation with Protein G beads for 10min, Mouse Brain whole tissue lysate lysate diluted in RIPA buffer was added to each sample and incubated for a further 10min under agitation.

Proteins were eluted by addition of 40µl SDS loading buffer and incubated for 10min at 70°C; 10µl of each sample was separated on a SDS PAGE gel, transferred to a nitrocellulose membrane, blocked with 5% BSA and probed with ab32942.

Secondary: Mouse monoclonal [SB62a] Secondary Antibody to Rabbit IgG light chain (HRP) ([ab99697](#)).

Band: 82kDa: SV2A

**Please note:** All products are "FOR RESEARCH USE ONLY. NOT FOR USE IN DIAGNOSTIC PROCEDURES"

### Our Abpromise to you: Quality guaranteed and expert technical support

---

- Replacement or refund for products not performing as stated on the datasheet
- Valid for 12 months from date of delivery
- Response to your inquiry within 24 hours
- We provide support in Chinese, English, French, German, Japanese and Spanish
- Extensive multi-media technical resources to help you
- We investigate all quality concerns to ensure our products perform to the highest standards

If the product does not perform as described on this datasheet, we will offer a refund or replacement. For full details of the Abpromise, please visit <https://www.abcam.com/abpromise> or contact our technical team.

### Terms and conditions

---

- Guarantee only valid for products bought direct from Abcam or one of our authorized distributors