




Anti-Swd2 antibody ab220240

[1 References](#) [2 Images](#)

Overview

Product name	Anti-Swd2 antibody
Description	Rabbit polyclonal to Swd2
Host species	Rabbit
Tested applications	Suitable for: WB, ICC/IF
Species reactivity	Reacts with: Human Predicted to work with: Mouse, Chicken, Xenopus laevis, Zebrafish, Xenopus tropicalis 
Immunogen	Recombinant fragment corresponding to Human Swd2 aa 200 to the C-terminus. Database link: Q6UXN9  Run BLAST with  Run BLAST with
Positive control	U-251 MG cell lysate; U-251 MG cells.
General notes	<p>The Life Science industry has been in the grips of a reproducibility crisis for a number of years. Abcam is leading the way in addressing this with our range of recombinant monoclonal antibodies and knockout edited cell lines for gold-standard validation. Please check that this product meets your needs before purchasing.</p> <p>If you have any questions, special requirements or concerns, please send us an inquiry and/or contact our Support team ahead of purchase. Recommended alternatives for this product can be found below, along with publications, customer reviews and Q&As</p>

Properties

Form	Liquid
Storage instructions	Shipped at 4°C. Store at +4°C short term (1-2 weeks). Upon delivery aliquot. Store at -20°C long term. Avoid freeze / thaw cycle.
Storage buffer	pH: 7.20 Preservative: 0.02% Sodium azide Constituents: 40% Glycerol (glycerin, glycerine), 59% PBS
Purity	Immunogen affinity purified
Clonality	Polyclonal
Isotype	IgG

Applications

The Abpromise guarantee

Our **Abpromise guarantee** covers the use of ab220240 in the following tested applications.

The application notes include recommended starting dilutions; optimal dilutions/concentrations should be determined by the end user.

Application	Abreviews	Notes
WB		Use a concentration of 0.04 - 0.4 µg/ml. Predicted molecular weight: 35 kDa.
ICC/IF		Use a concentration of 0.25 - 2 µg/ml.

Target

Function

Regulatory component of the SET1 complex implicated in the tethering of this complex to transcriptional start sites of active genes. Facilitates histone H3 'Lys-4' methylation via recruitment of the SETD1A or SETD1B to the 'Ser-5' phosphorylated C-terminal domain (CTD) of RNA polymerase II large subunit (POLR2A). Component of PTW/PP1 phosphatase complex, which plays a role in the control of chromatin structure and cell cycle progression during the transition from mitosis into interphase.

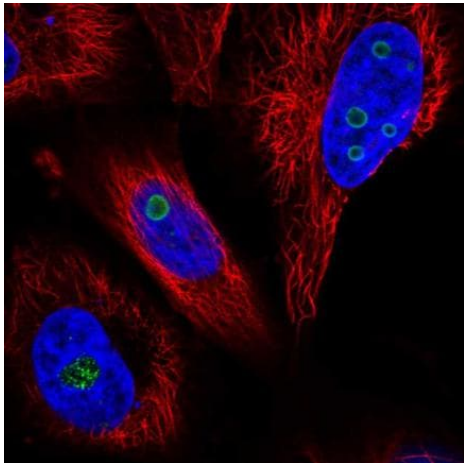
Sequence similarities

Belongs to the WD repeat SWD2 family.
Contains 6 WD repeats.

Cellular localization

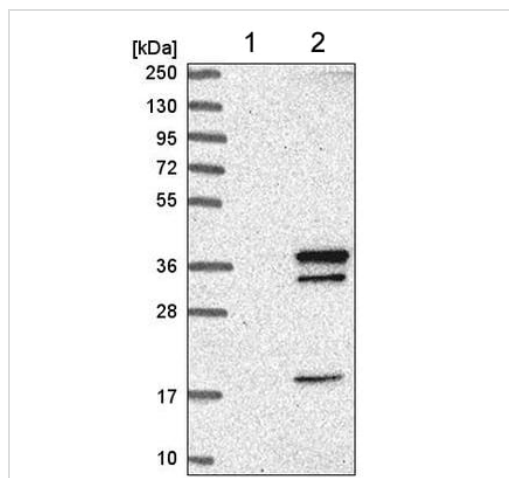
Nucleus. Associates with chromatin.

Images



Immunofluorescent analysis of U-251 MG cells (PFA-fixed/Triton X-100 permeabilized) labeling Swd2 with ab220240 at 4µg/ml (green).

Immunocytochemistry/ Immunofluorescence - Anti-Swd2 antibody (ab220240)



Western blot - Anti-Swd2 antibody (ab220240)

All lanes : Anti-Swd2 antibody (ab220240) at 1/100 dilution

Lane 1 : RT-4 cell lysate

Lane 2 : U-251 MG cell lysate

Predicted band size: 35 kDa

Please note: All products are "FOR RESEARCH USE ONLY. NOT FOR USE IN DIAGNOSTIC PROCEDURES"

Our Abpromise to you: Quality guaranteed and expert technical support

- Replacement or refund for products not performing as stated on the datasheet
- Valid for 12 months from date of delivery
- Response to your inquiry within 24 hours
- We provide support in Chinese, English, French, German, Japanese and Spanish
- Extensive multi-media technical resources to help you
- We investigate all quality concerns to ensure our products perform to the highest standards

If the product does not perform as described on this datasheet, we will offer a refund or replacement. For full details of the Abpromise, please visit <https://www.abcam.com/abpromise> or contact our technical team.

Terms and conditions

- Guarantee only valid for products bought direct from Abcam or one of our authorized distributors